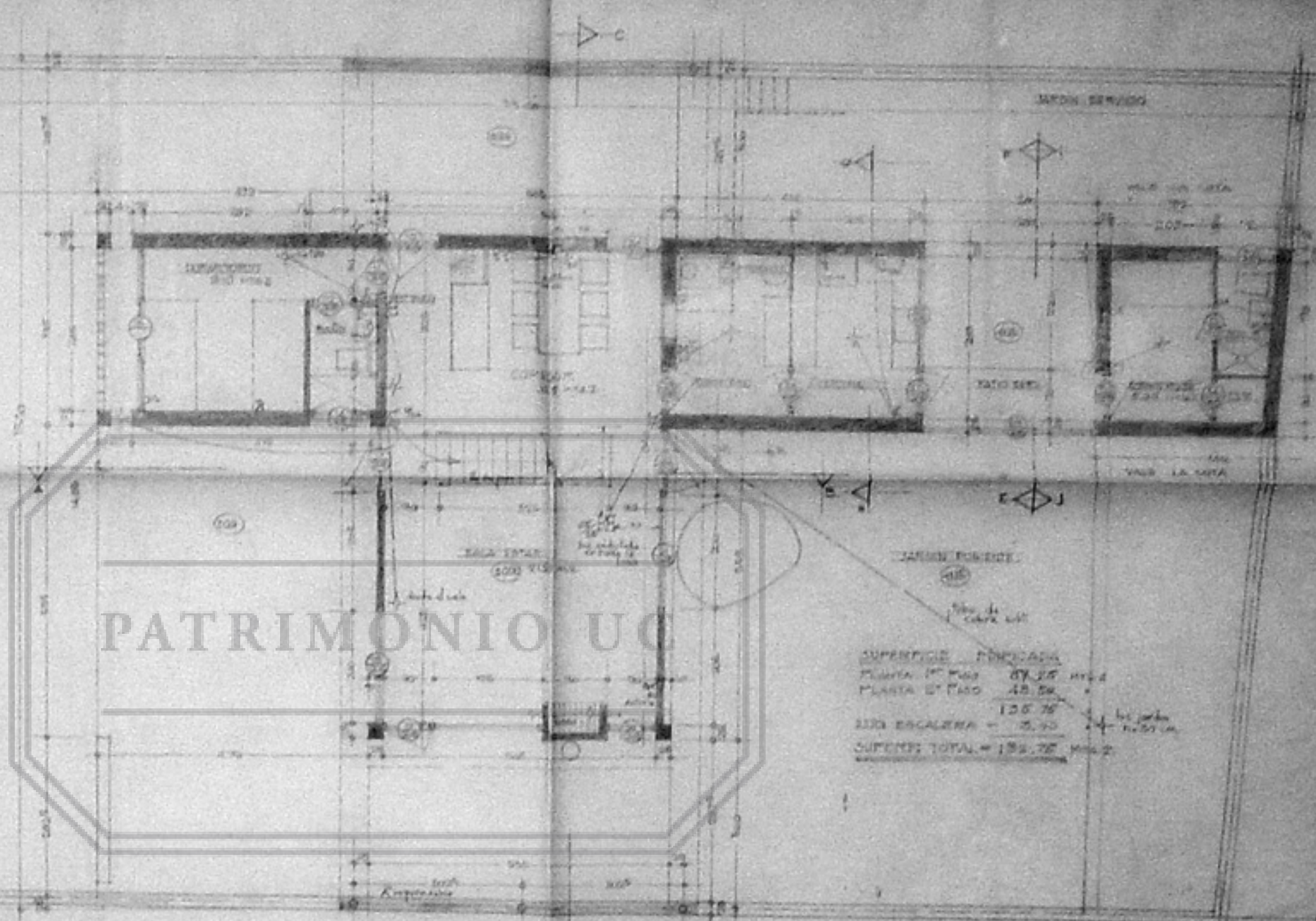
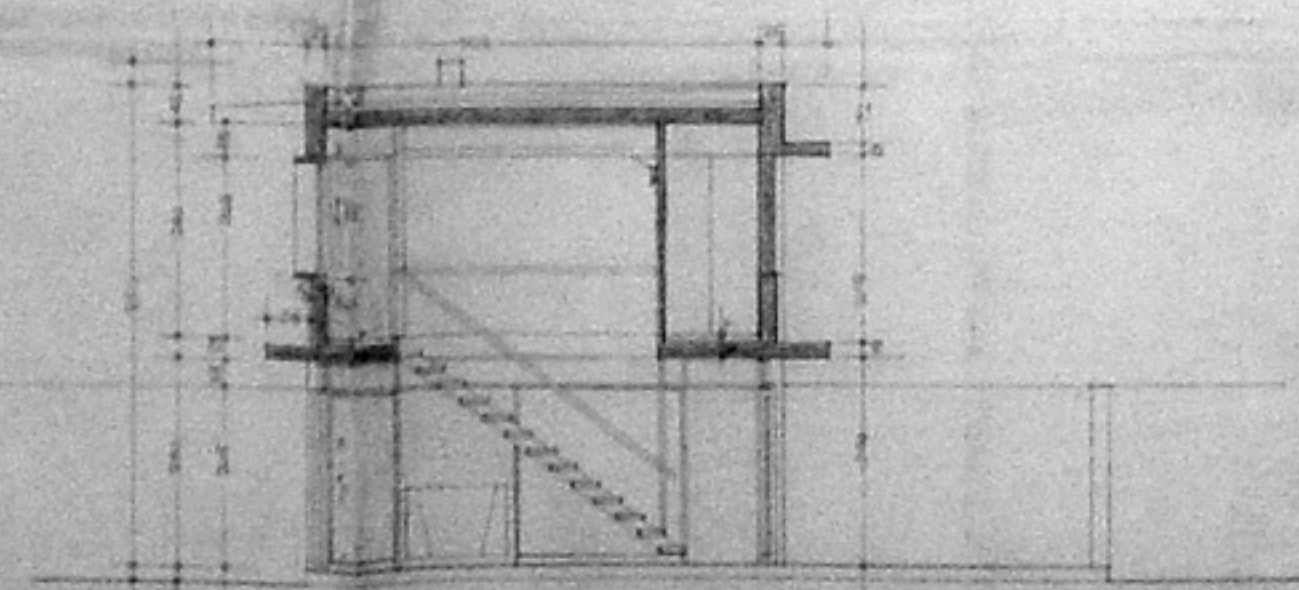


CALLE JORGE V

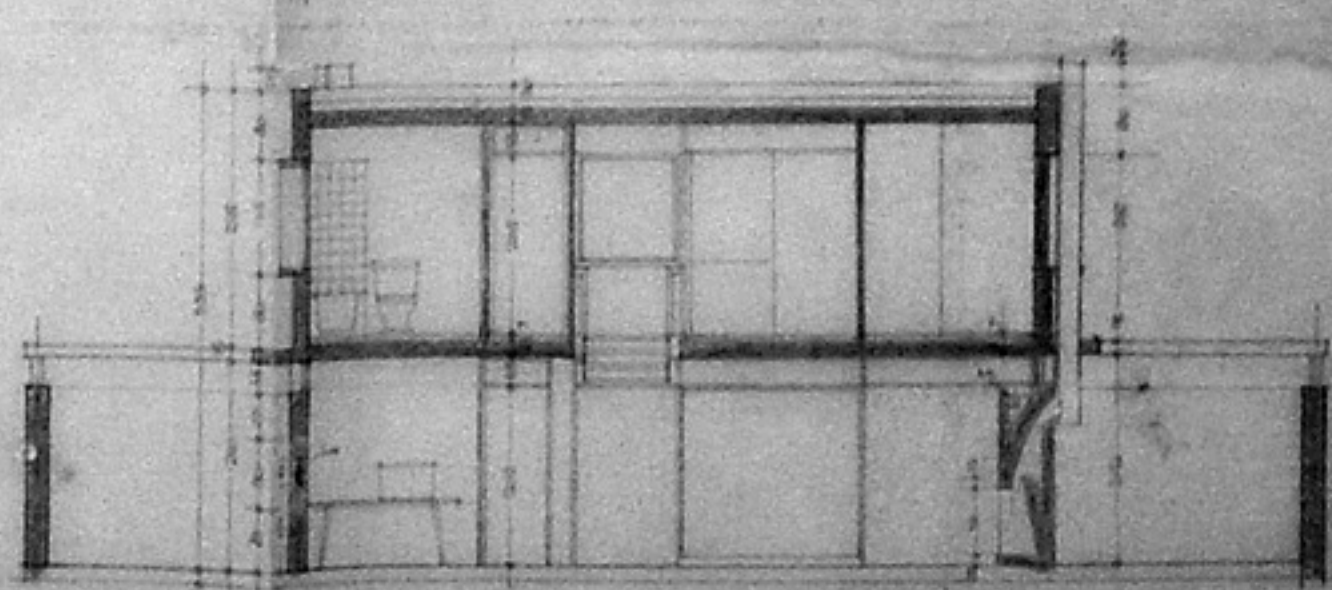


SUPERFICIE PONDICADA
 PLANTA 1º PISO 87,25 M²
 PLANTA 2º PISO 48,50 M²
 135,75 M²
 SIN ESCALERA = 130,75 M²
 SUPERFICIE TOTAL = 130,75 M²

CORTE A-B



CORTE C-D



11-A