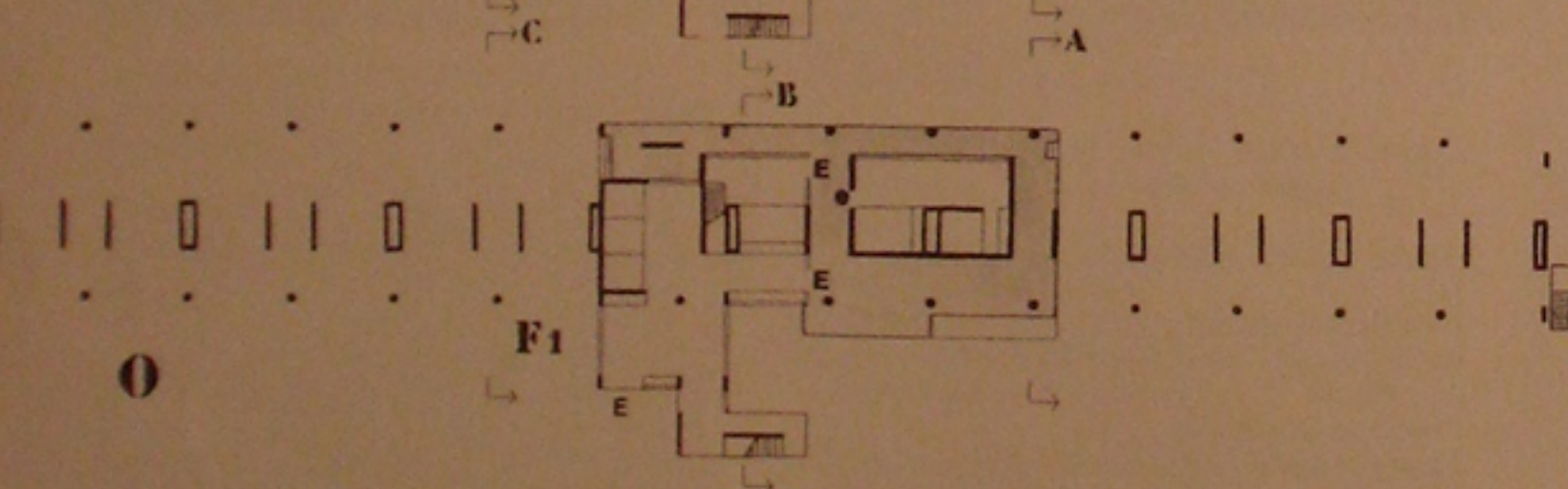
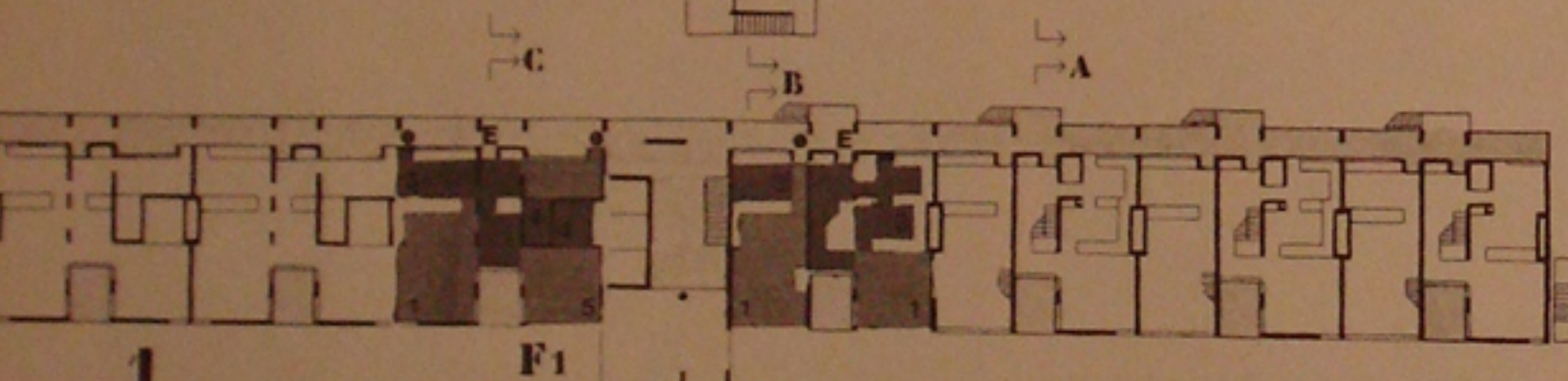
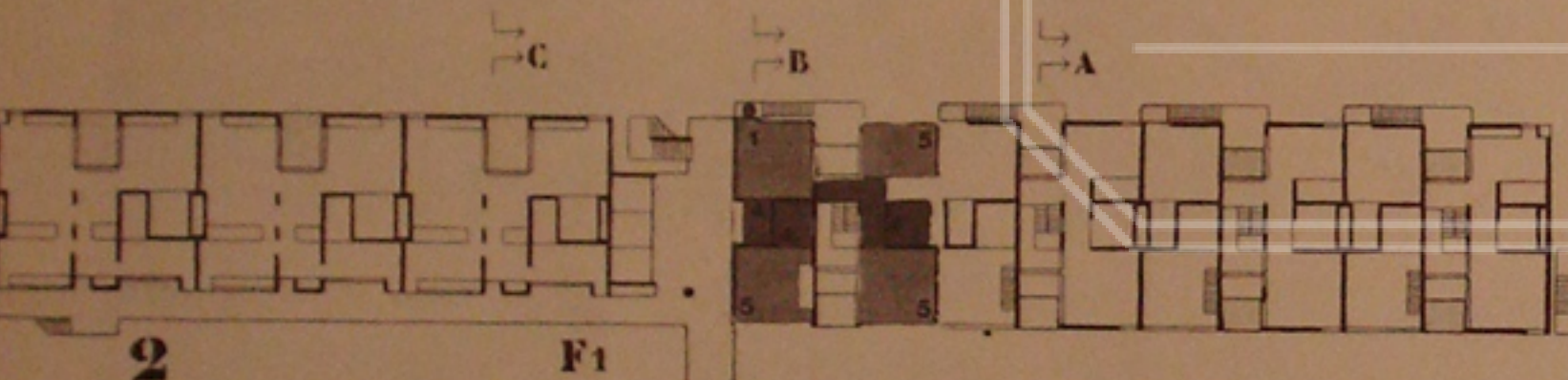
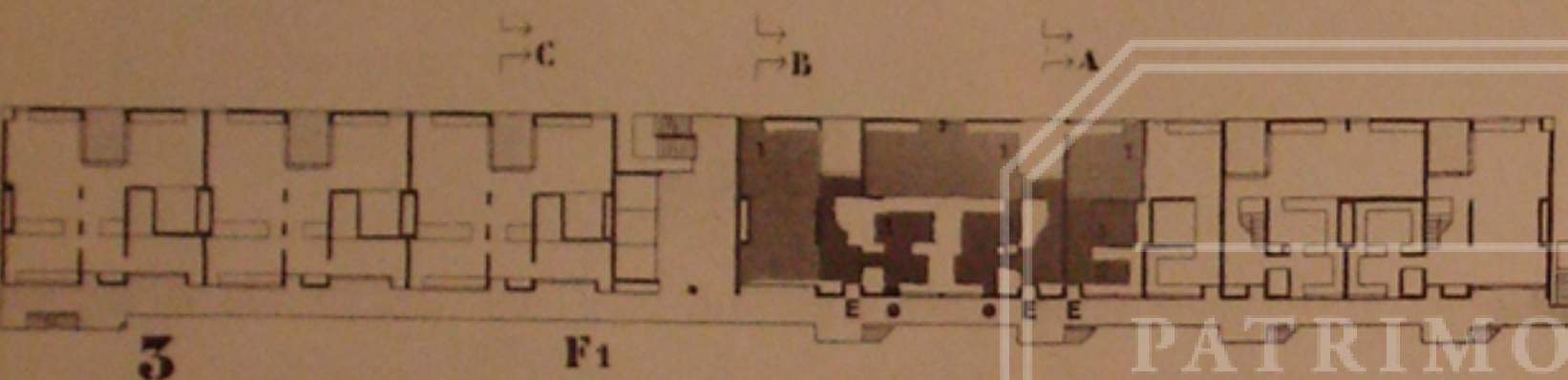
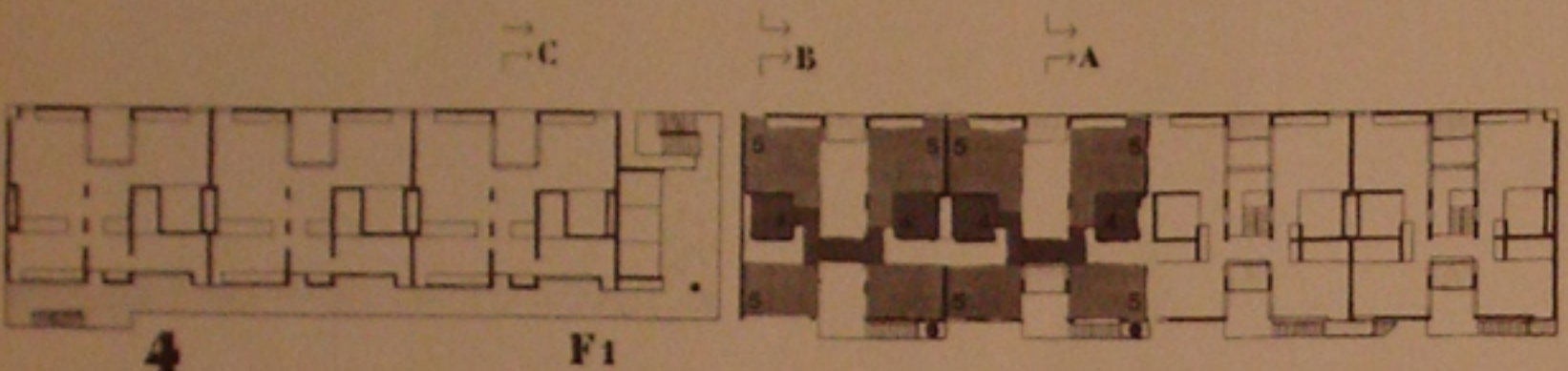
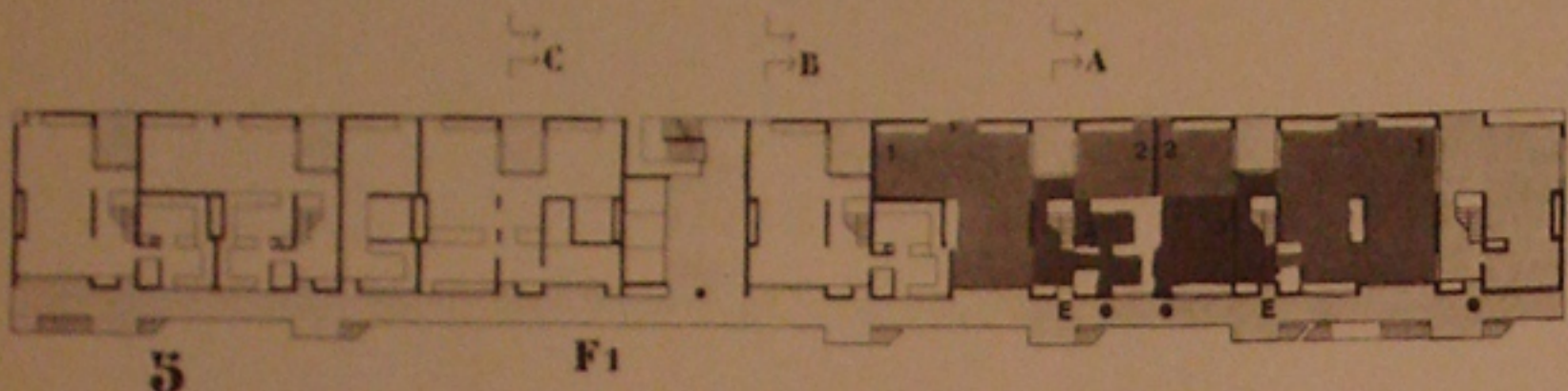
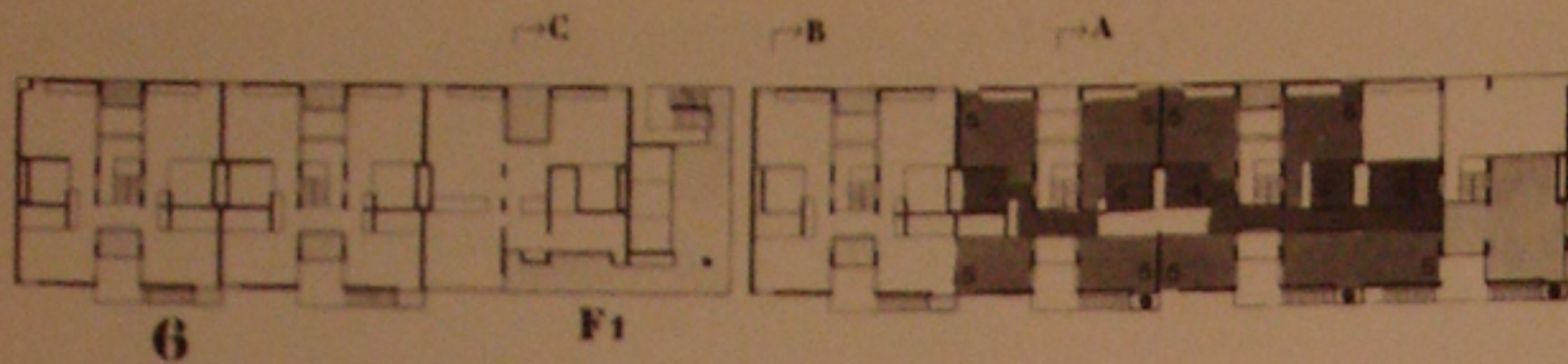


## HOUSING BLOCK IN BRASILIA - 1971

Connected to the embassy project was a study for habitation. The general plan of Brasilia by O. Niemeyer determined the envelop. The requirement was to respect this idea of envelop.

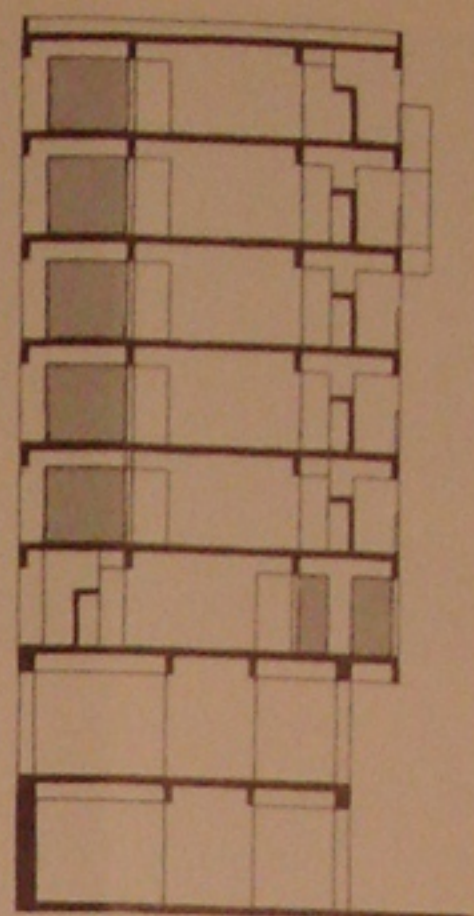
The project studied used the envelop which would allow maximum flexibility within a given framework. The apartment developed as a type a patio-garden and shaded by the sun. This space also functions as an atrium for the ventilation of the apartment and controlling light similar to that of the embassy building.

The matrix system developed for a single unit determines the general distribution plan. The plastic solutions within this matrix can be resolved from time to time by the inhabitants.

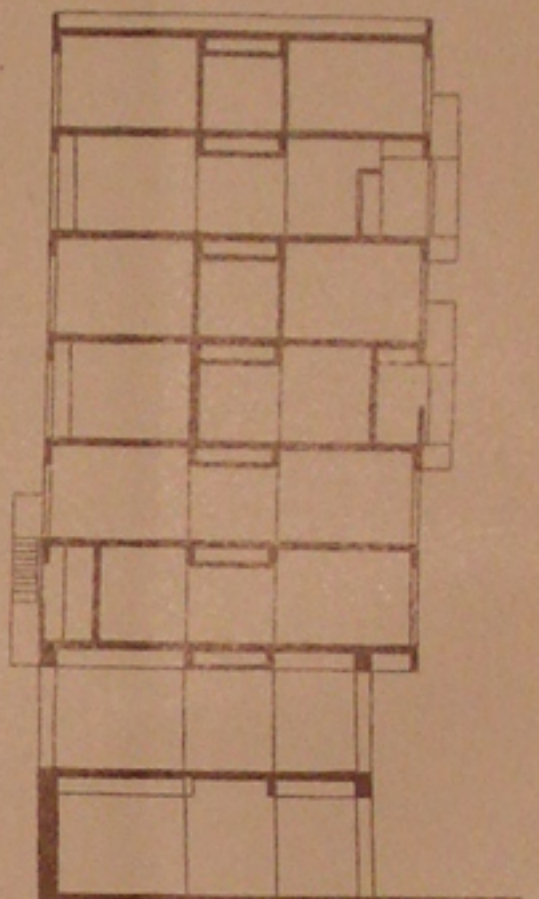


HA BR

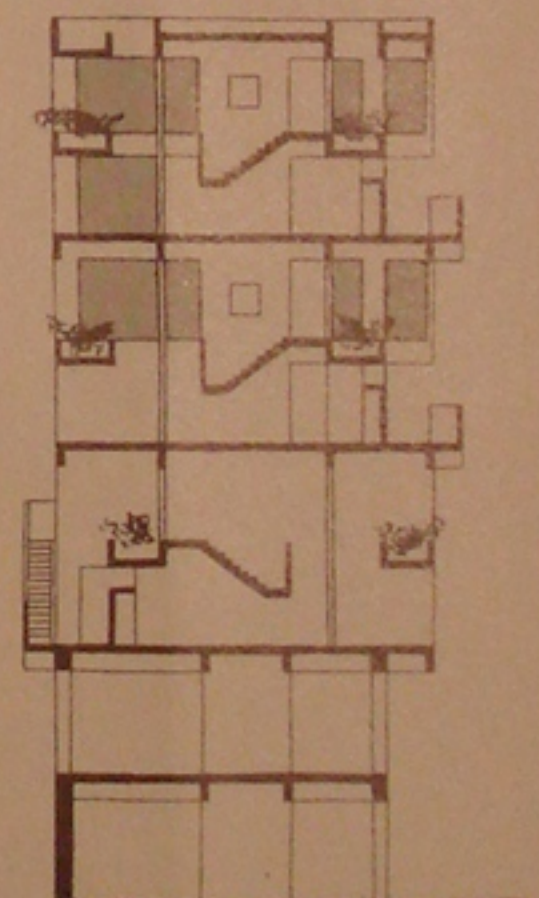
PATRIMONIO UC



Cc



CB



CA

HA BR

- 35 Pianta
- Plans.
- 36, 37, 38 Sezioni.
- Sections.
- 39 Prospetto.
- Elevation.
- 40, 41, 42, 43 Plastico della soluzione finale.
- Final model.