

# ACTO 3

P785.14  
D278e  
19--?  
partit c.1

# PIANO A

**PREVENCIÓN** ENTRADA DE GERARD CON GRIGORIEVA)

**PIE** ME PROMETES QUE NO TE VAS A REIR ? DE... DE MILAGROS.

**ATACA**

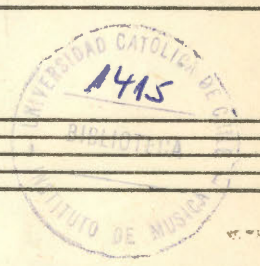
(SIGUEN HABLANDO CON LA MUSICA) **GRIG.** ¿STE CASARIAS CON ELLA ?

**GER.** NO HE PODIDO ENCONTRARLA. **GRIG.** NO ME HAS  
CONTESTADO A MI PREGUNTA. **GER.** ¡NO SE SI ME CASARIA  
CON ELLA ! PERO QUIERO VERLA GRIGI. POR FAVOR TIENES  
QUE DECIRME DONDE ESTA.

Piano B.

ppp

**GRIGORIEVA**  
DIME... ¿SERIAS CAPAZ DE ABANDONAR TODO  
ESTO POR ELLA ?



P  
782.14  
B277e  
195-?  
Pte.1  
c.1

PATRIMONIO UC

316320

GERARD

GRIGORIEVA Y LANZARTE

A TRAVES DEL MUNDO EN BUSCA DE UN MILAGRO SIN APELLIDO...?

GER

SI

SI, CREO QUE SI.

Handwritten musical score for the first system, consisting of two staves. The top staff has a treble clef and contains notes with stems pointing up and down, some with slurs and accents. The bottom staff has a bass clef and contains notes with stems pointing up and down, also with slurs and accents. There are some handwritten annotations like arrows and a downward-pointing arrow above the first measure.

(GRIGORIEVA QUEDA MEDITARONDA APOYADA EN UNA SILLA; Y EMOCIONADA, MIENTRAS SE TOCAN LOS SIGUIENTES TRES COMPASES)

Handwritten musical score for the second system, consisting of two staves. The top staff has a treble clef and contains notes with stems pointing up and down, some with slurs and accents. The bottom staff has a bass clef and contains notes with stems pointing up and down, also with slurs and accents. There are some handwritten annotations like a circled 'P' and various symbols.

(GRIGORIEVA SE APARTA BRUSCAMENTE DE LA SILLA, DONDE SE APOYABA, Y DANDO MEDIA VUELTA SE DIRIGE AL FONDO, DONDE SE VUELVE AL HABLARLE GERARD)

GERARD : ADONDE VAS?... GRIGI, NO ME DEJES SOLO... (PAUSA)

Handwritten musical score for the third system, consisting of two staves. The top staff has a treble clef and contains notes with stems pointing up and down, some with slurs and accents. The bottom staff has a bass clef and contains notes with stems pointing up and down, also with slurs and accents. There are some handwritten annotations like 'ANIMADO SOBITO' and 'PATRIMONIO UC ACELL...'

(SIGUE HABLANDO GERARD)

GER

¡GRIGI... PROMETEME ALGO...!

¡QUE NO LE CONTARAS A NADIE EN PARIS LO QUE ME PASÓ!

GRIG (VACILANTE)

¿S QUE...?

GRIG

¿S QUE TE ENAMORASTE  
¿Y PORQUE NO? ¿TE DA  
VERGÜENZA?

Handwritten musical notation for the first section. It consists of a grand staff with two staves. The left staff is for piano accompaniment, and the right staff is for the vocal line. The music is written in blue ink and includes various notes, rests, and accidentals. There are some markings above the notes, possibly indicating fingerings or dynamics.

(SIGUE HABLANDO GRIGORIEVA CON LA MUSICA)

NO SEAS TONTO, EN EL

Handwritten musical notation for the second section. It consists of a grand staff with two staves. The left staff is for piano accompaniment, and the right staff is for the vocal line. The music is written in blue ink and includes various notes, rests, and accidentals. There are some markings above the notes, possibly indicating fingerings or dynamics.

FONDO, SI PUDIERAMOS ACEPTAR ESO, ENTREGARNDOS A ESO, NO

CASI CADEC. (libit)

Handwritten musical notation for the third section. It consists of a grand staff with two staves. The left staff is for piano accompaniment, and the right staff is for the vocal line. The music is written in blue ink and includes various notes, rests, and accidentals. There are some markings above the notes, possibly indicating fingerings or dynamics. The word 'PATRIMONIO' is written across the piano part.

ANDARIAMOS HACIENDO  
LOCURAS POR EL MUNDO.  
¿NO TE PARECE?

(GRIGI TIRA  
UN BESO  
VOLADO A  
GERARD) Y... HACE MUTIS.)

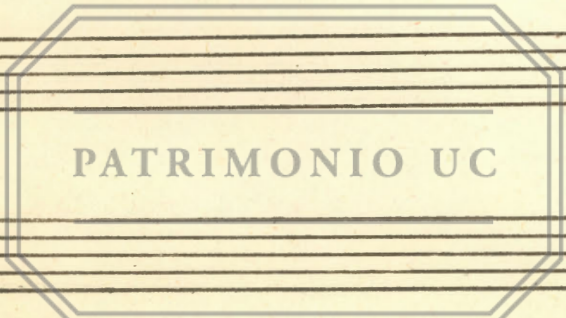
8<sup>a</sup>

(VA DESAPARECIENDO EL TREMOLO HASTA DEJAR VIBRAR UNICAMENTE  
EL SONIDO COMO GUIA A GERARD HASTA QUE COMIENZA A SILBAR)

8<sup>a</sup>

RALL + SMORZ.

PATRIMONIO UC



PATRIMONIO UC



N.º 2731 10 pautas

PIANO A. (3.º Acto) "Entre Penas de Trini"

GERARD

SILBADO

TRINI

PATRIMONIO UC

TRANQUILLO.

Handwritten musical notation for the first system. It consists of two staves. The top staff is in treble clef with a key signature of one sharp (F#) and a 3/4 time signature. The bottom staff is in bass clef with the same key signature and time signature. The notation includes various notes, rests, and dynamic markings such as 'mf' in a circle. There are also some handwritten annotations like '2.' and '7' above the staves.

Handwritten musical notation for the second system, continuing from the first. It features two staves with similar notation to the first system, including notes, rests, and dynamic markings. The notation is dense and includes various rhythmic values and articulation marks.

Handwritten musical notation for the third system. The top staff continues the melody with notes and rests. The bottom staff features a complex passage with many notes, some marked with '+' signs, and a section with a wavy line and the word 'plurimi' written above it. There are also some handwritten annotations like '8.' and '4' in a circle.

PATRIMONIO UC

MAS ANIMADO.

Handwritten musical notation for the first system, consisting of two staves. The notation includes various notes, rests, and dynamic markings such as '+' and 'f'.

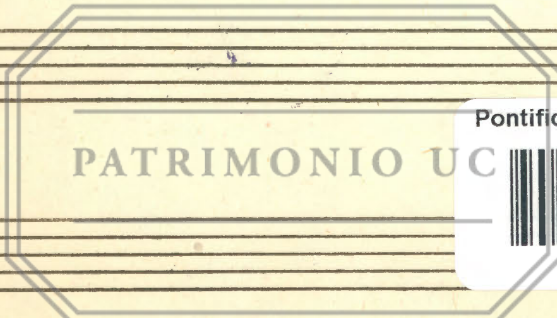
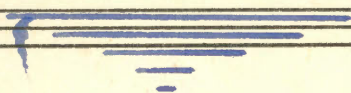
Handwritten musical notation for the second system, including a treble clef and various musical symbols. The notation is spread across two staves.

Handwritten musical notation for the third system, featuring a grand staff with piano and forte markings. The notation includes various notes, rests, and dynamic markings.

PATRIMONIO UC



FIN



Pontificia Universidad Católica de Chile

PATRIMONIO UC



56020017954690