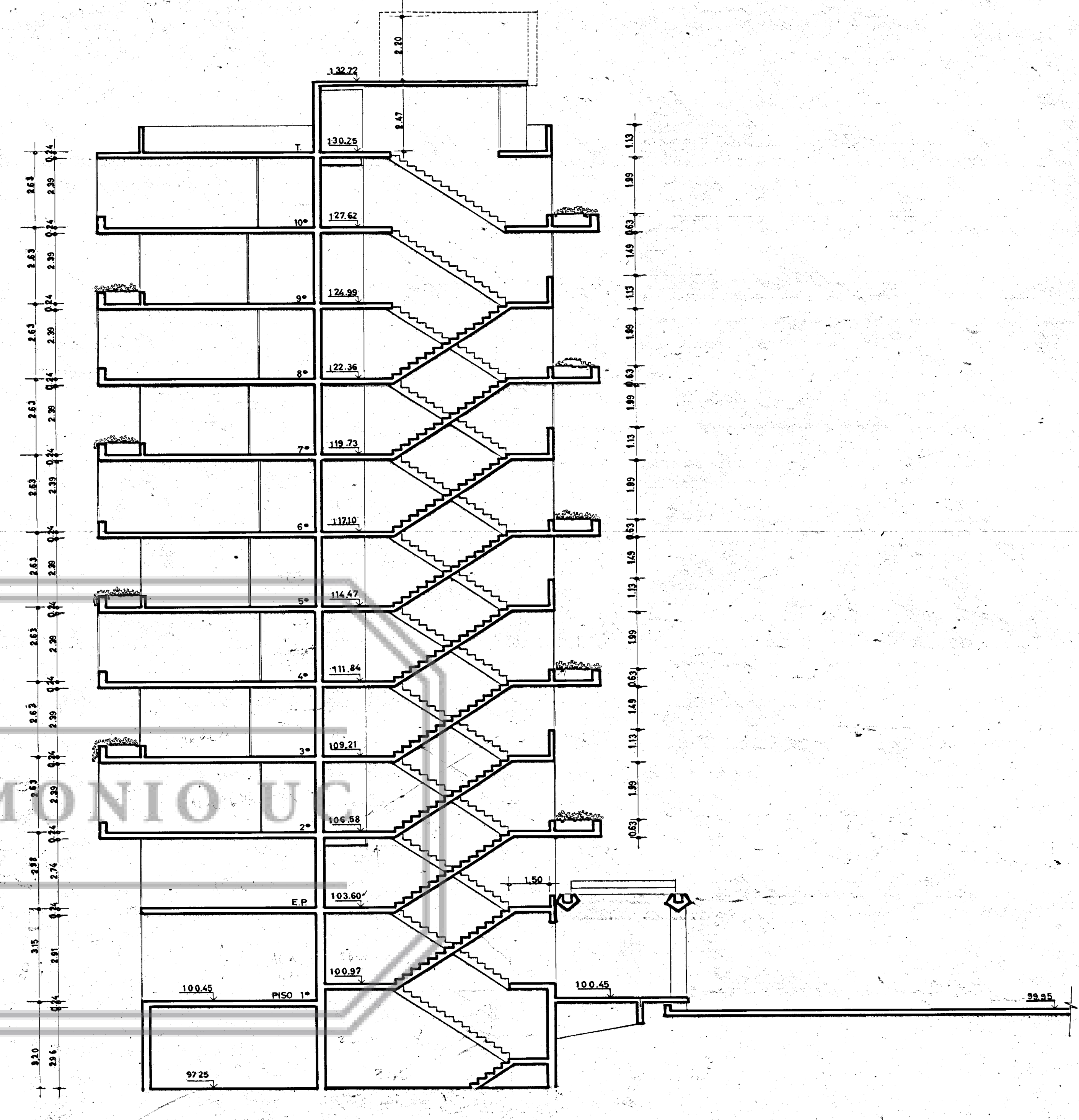
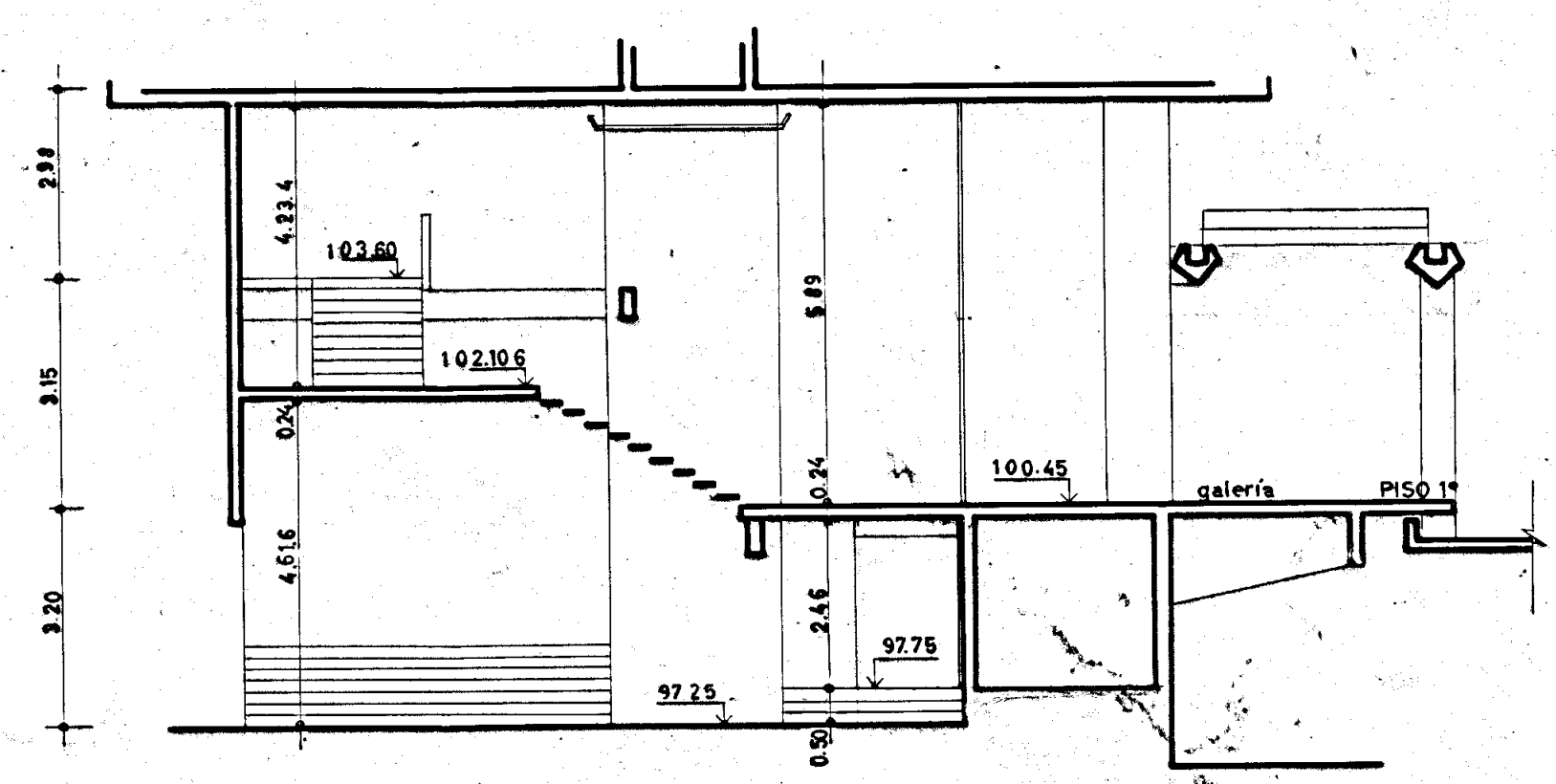


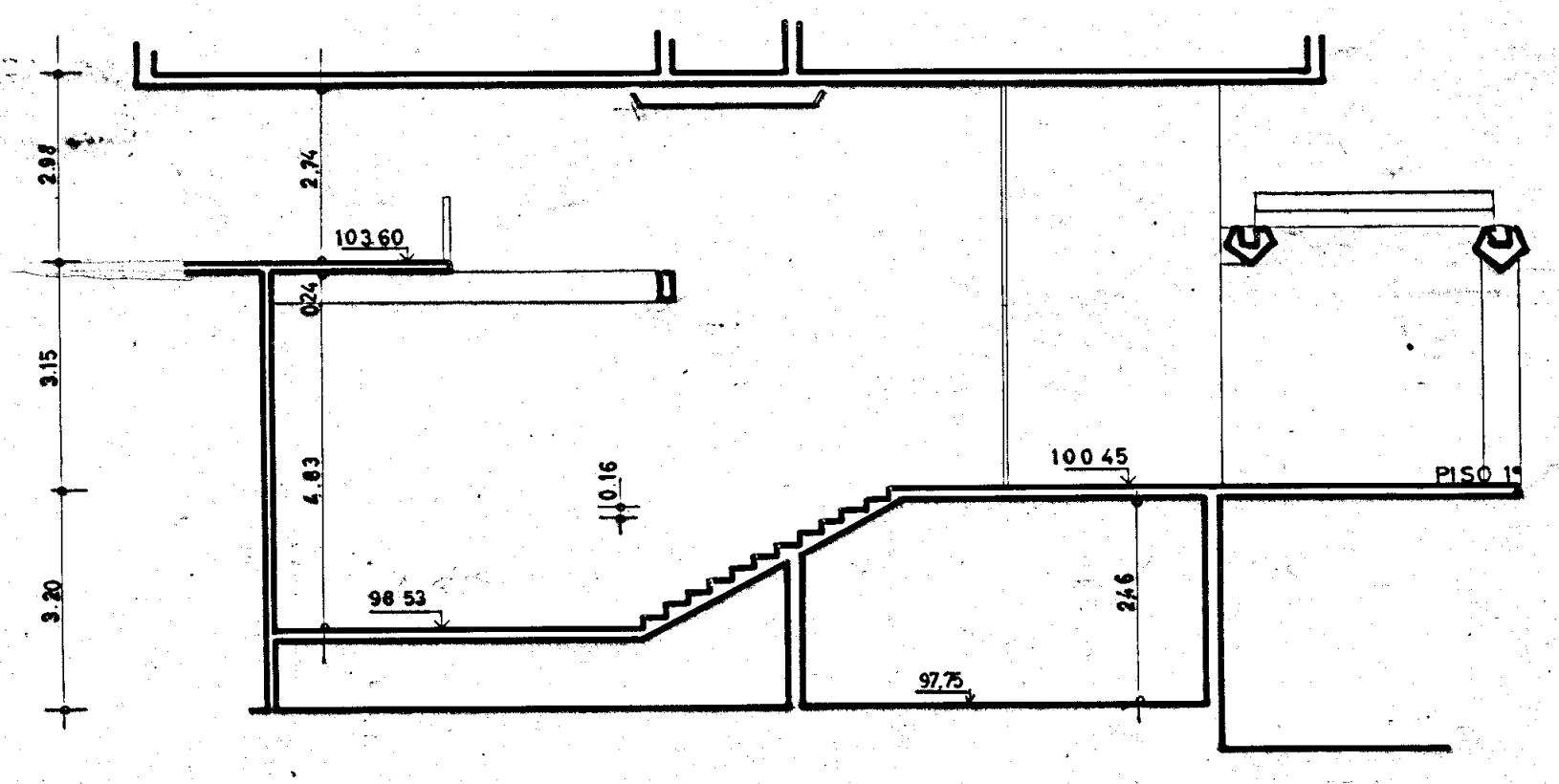
CORTE C-C



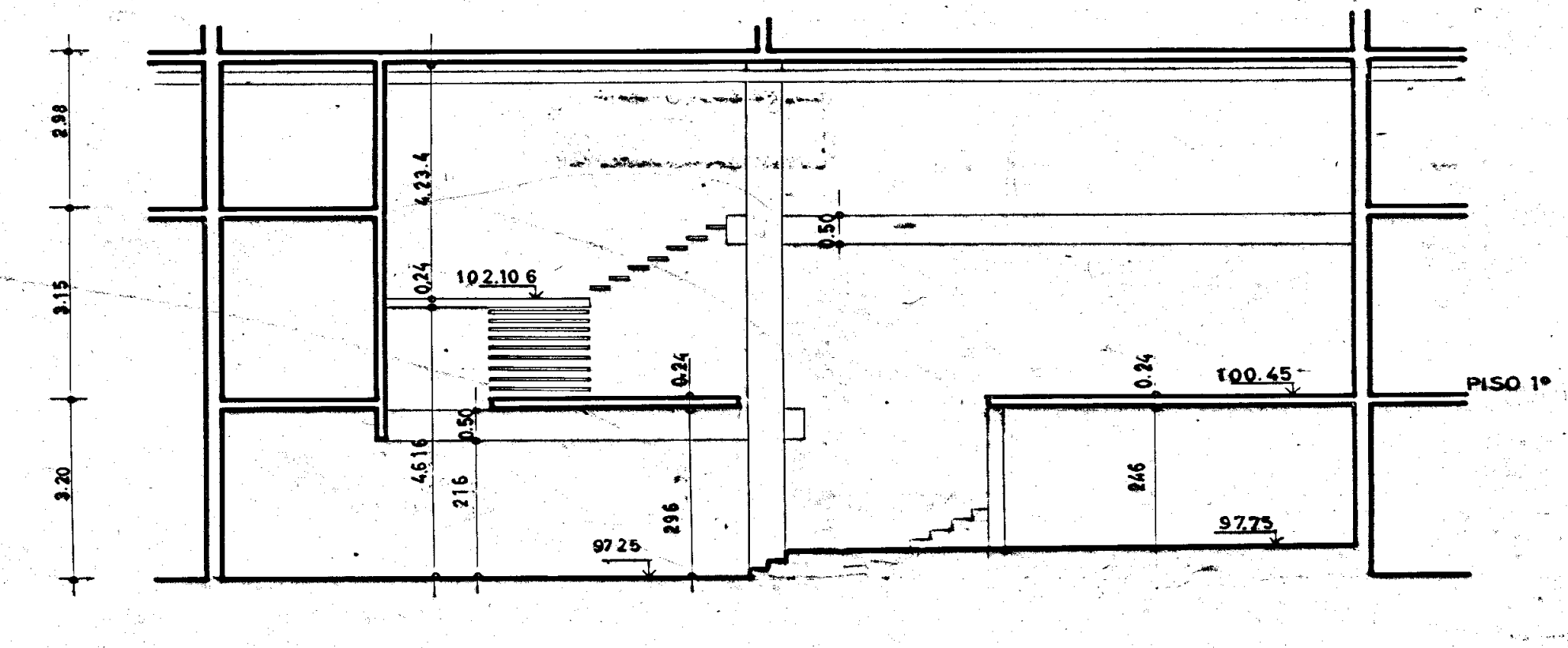
CORTE D-D



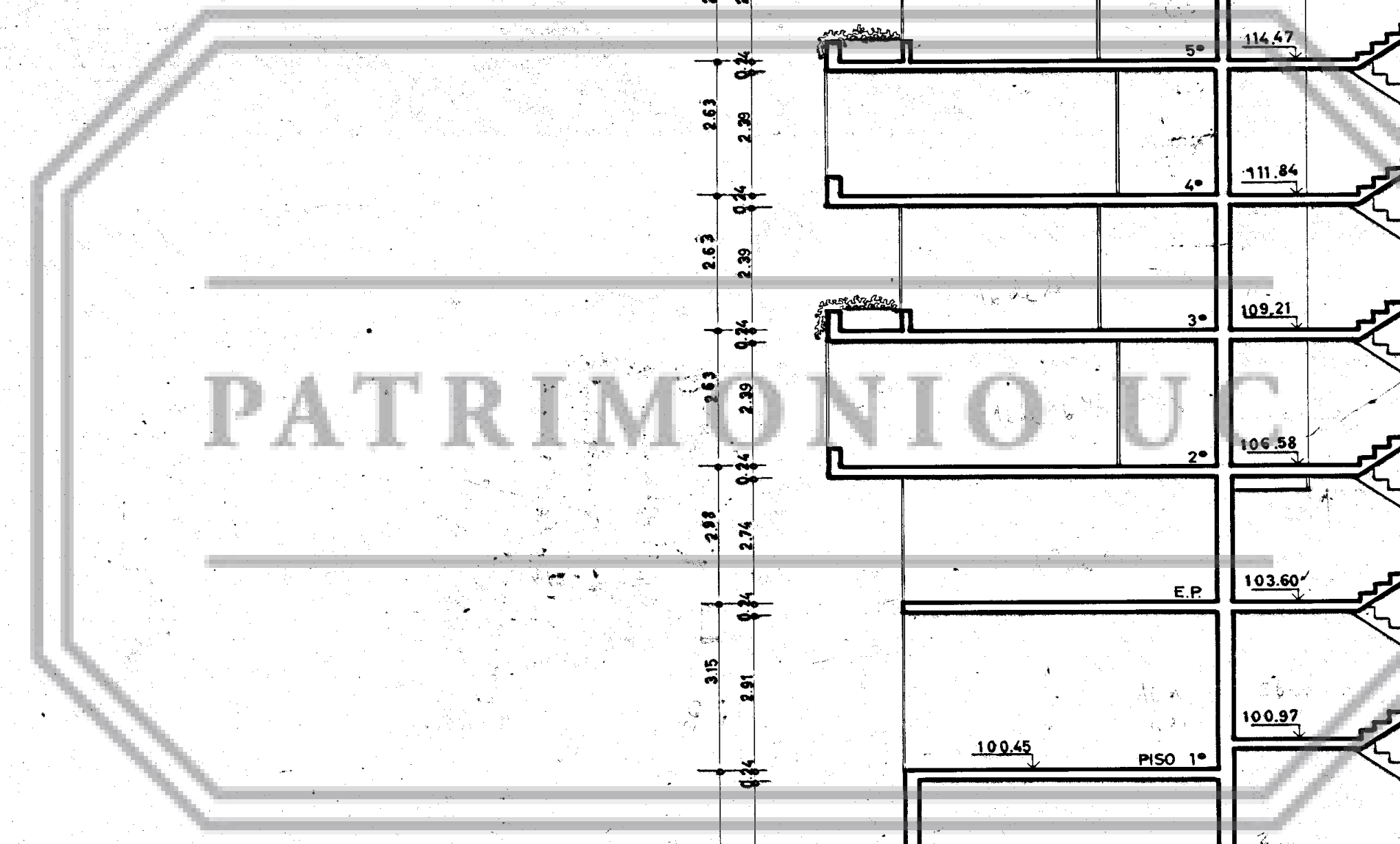
CORTE F-F



CORTE G-G



CORTE H-H



C. BOLTON S. LARRAIN L. PRIETO A. LORCA ARQUITECTOS		C. BRESIANI H. VALDES F. CASTILLO C. G. HUIDOBRO		PLANO Nº <b>P A</b> <b>B 13</b>
OBRA: TORRES DE TAJAMAR S.A.				OBRA Nº 3.40
PROPIETARIO: SCONS. TORRES DE TAJAMAR S.A.				PERMISO
UBICACION: Providencia / M. Claro / Tajamar				FECHA
comuna: Providencia calle:				24-1-63
PLANO DE: CORTES: C-C/D-D/F-F/G-G/H-H				ESCALA
				1: 100
<b>T T</b>		EDIFICIO <b>B</b>		
		MODIFICACION: 0		
APROBACION		PROPIETARIO		