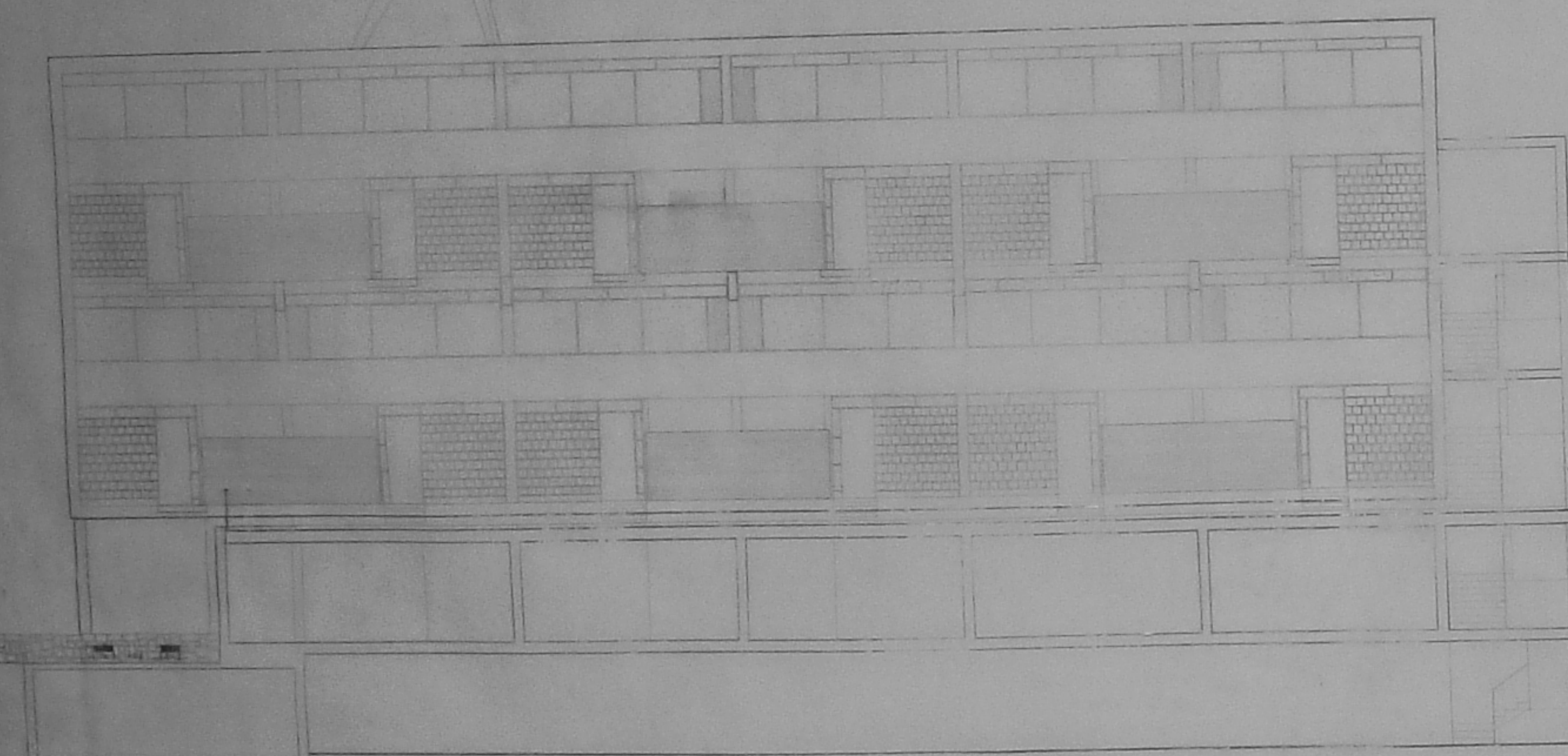
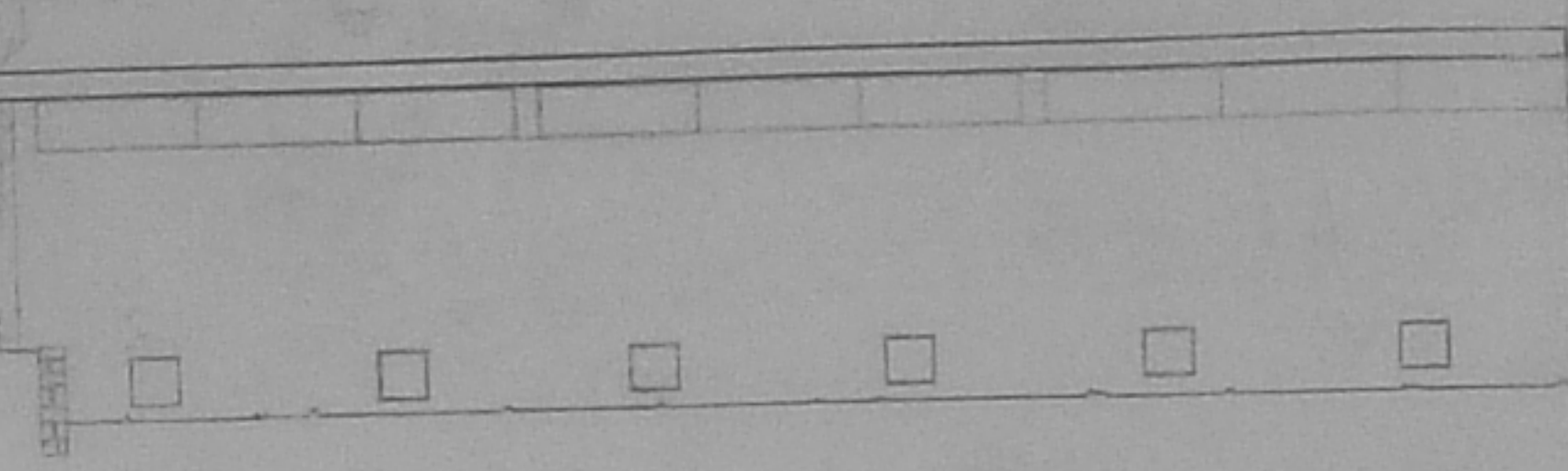


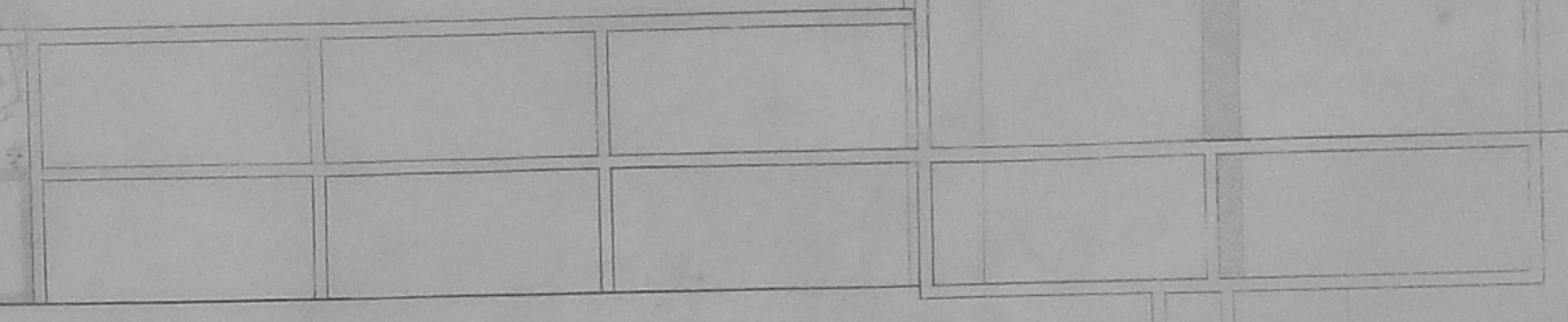
FACHADA BLOQUE B CON BALCONES



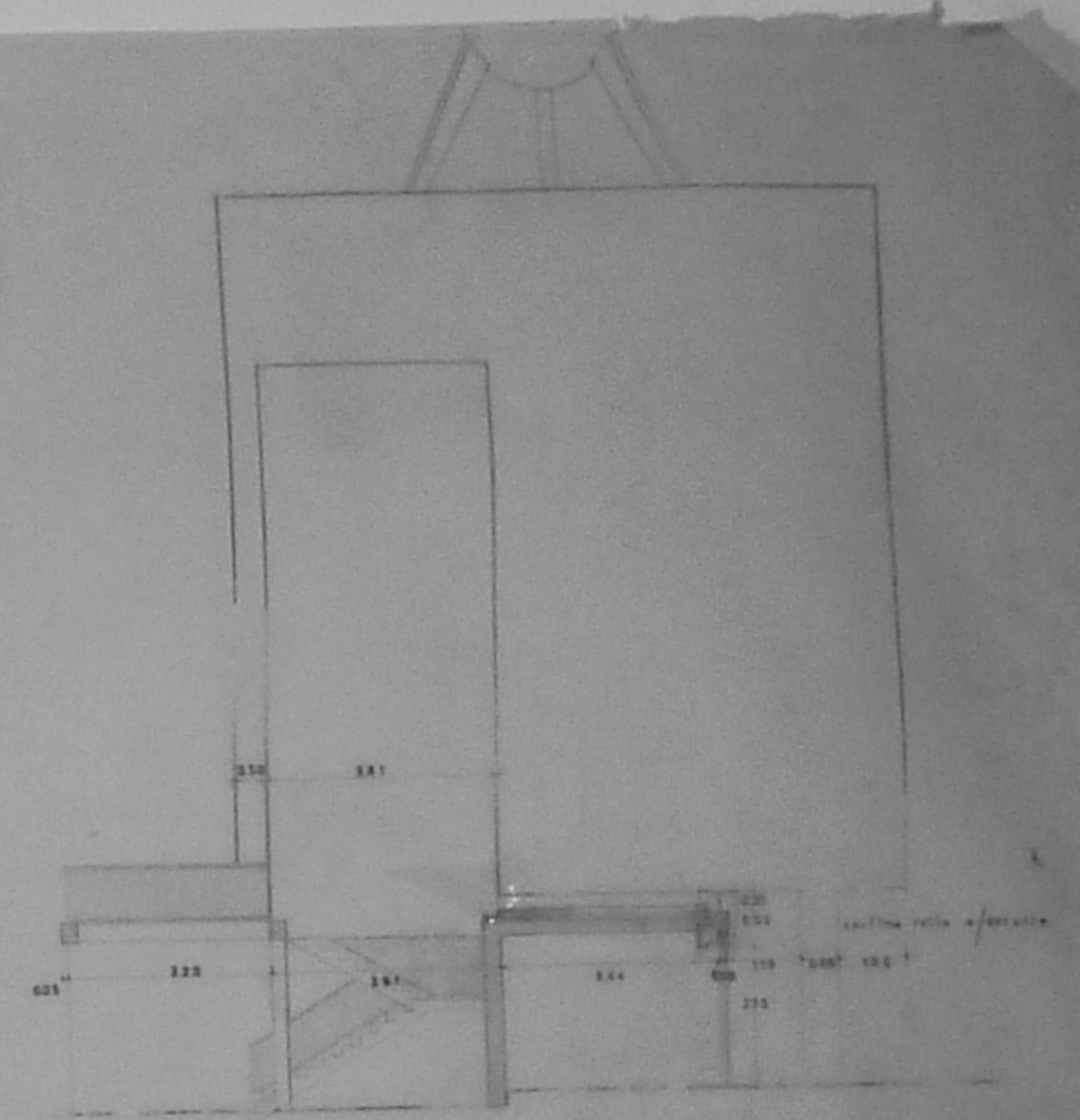
FACHADA SUR BLOQUE B SIN BALCONES



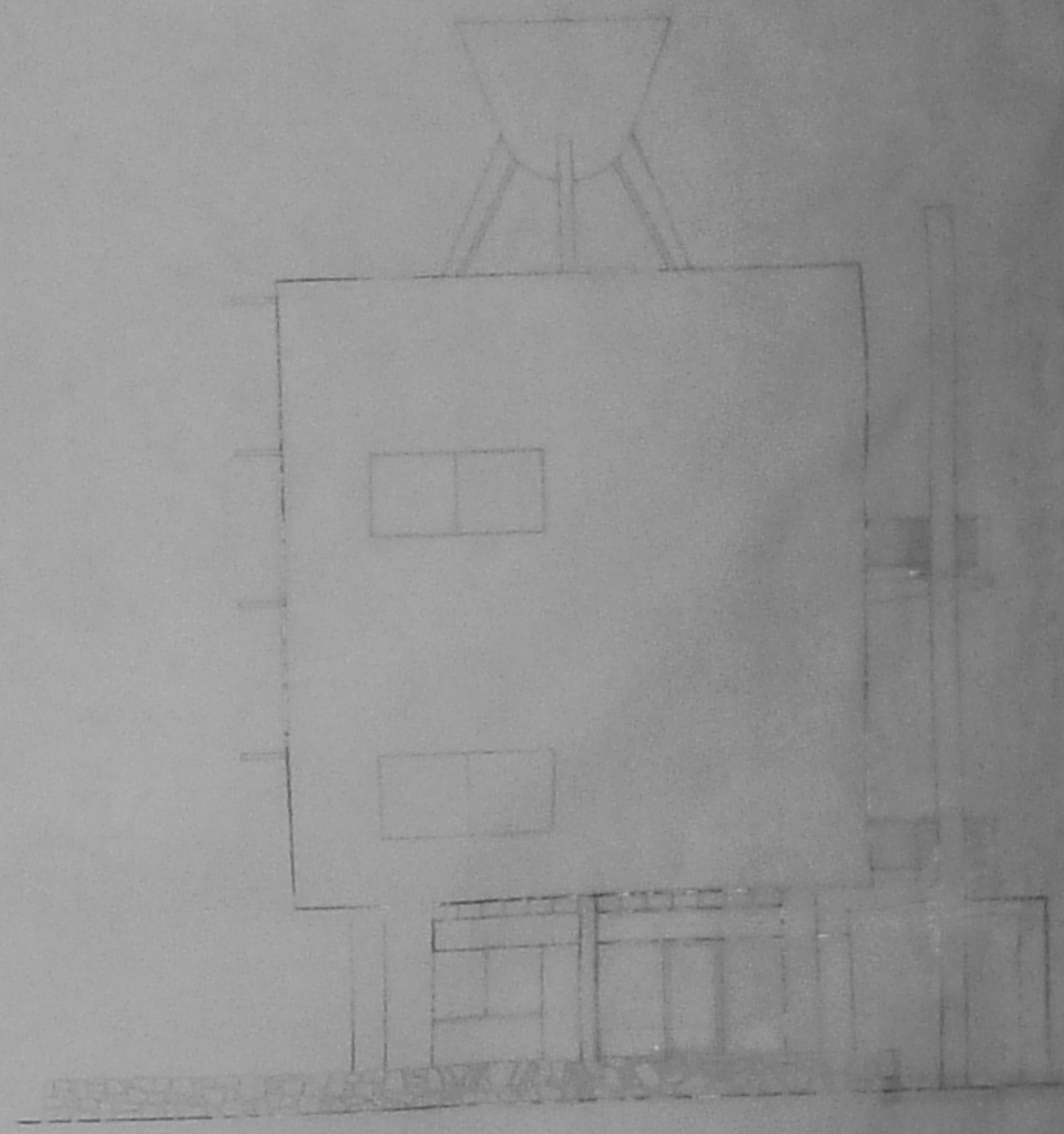
CORTE BLOQUE A



CORTE BLOQUE A



FACHADA ORIENTE BLOQUE B Y CORTE LOCALES



FACHADA PONIENTE BLOQUE B

NOTA PLANO COMPLETADO CON FECHA 12-5-58

NOTA: PLANO CORREGIDO CON FECHA 26.9.58