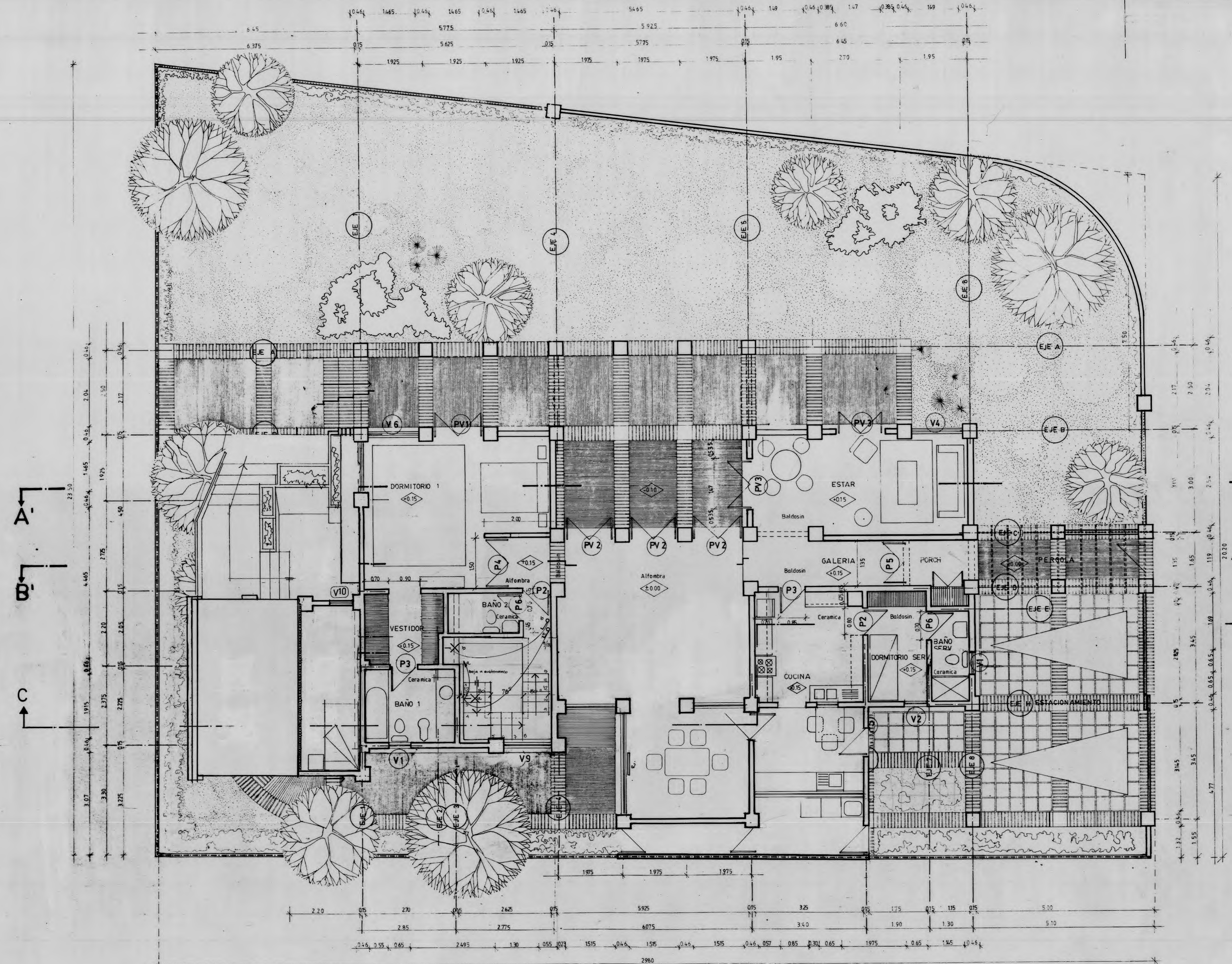


PLANTA PISO ZOCALO



PLANTA escala 1:50

**FERNANDO CASTILLO VELASCO**  
**e**  
**IGNACIO TRONCOSO KEYMER**  
 ARQUITECTOS

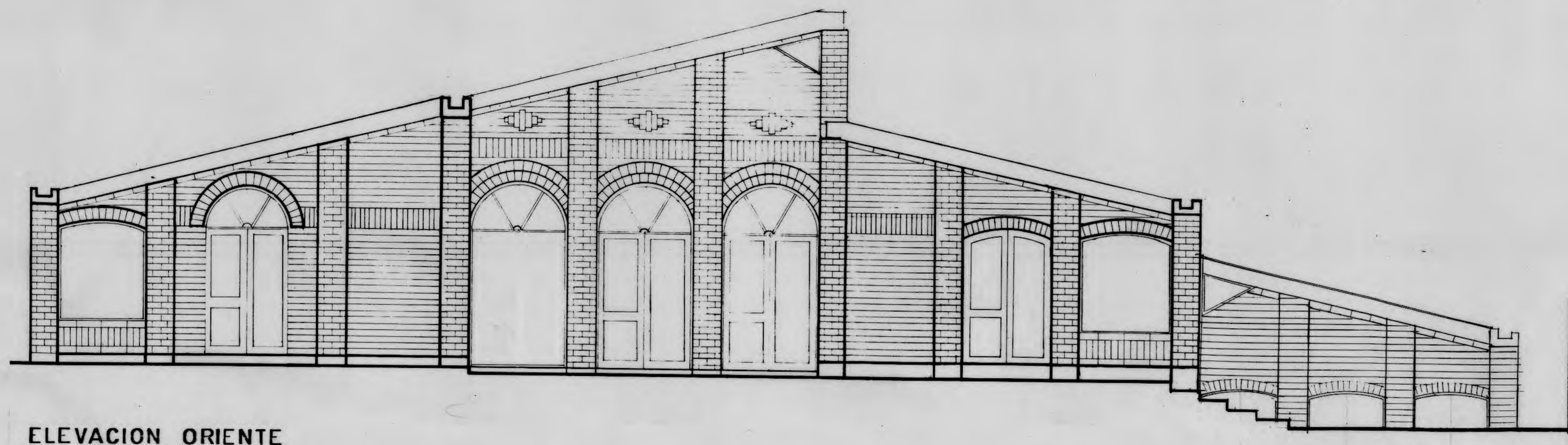
PROPIETARIO  
 F. ECHEVERRIA F. ALCAINO

PROYECTO  
 AMPLIACION CASA ECHEVERRIA-ALCAINO  
 UBICACION

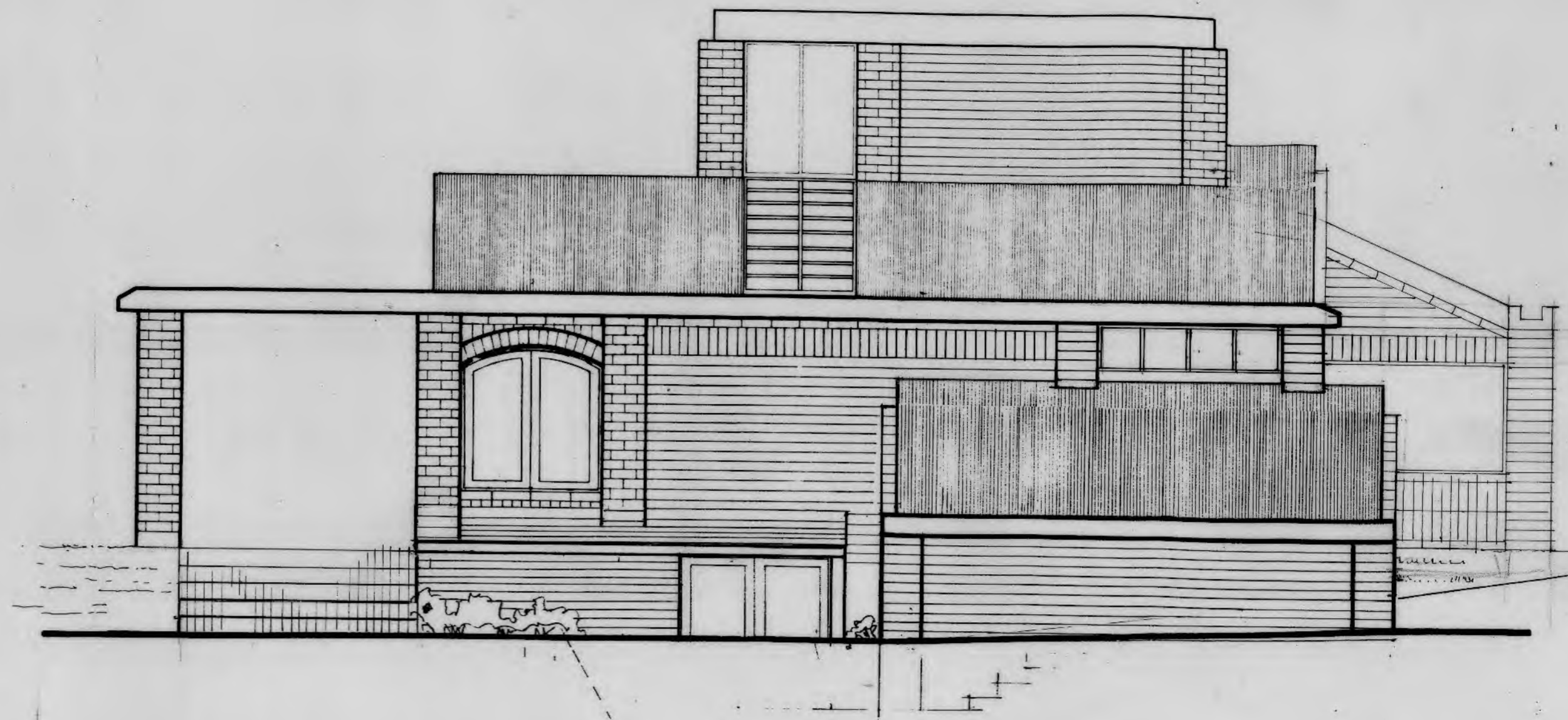
CONTENIDO  
 PLANTAS DE ARQUITECTURA

ARQ. REVIS.	ARQ. ENCARG.	DIBUJO
ITK	ITK	MFD

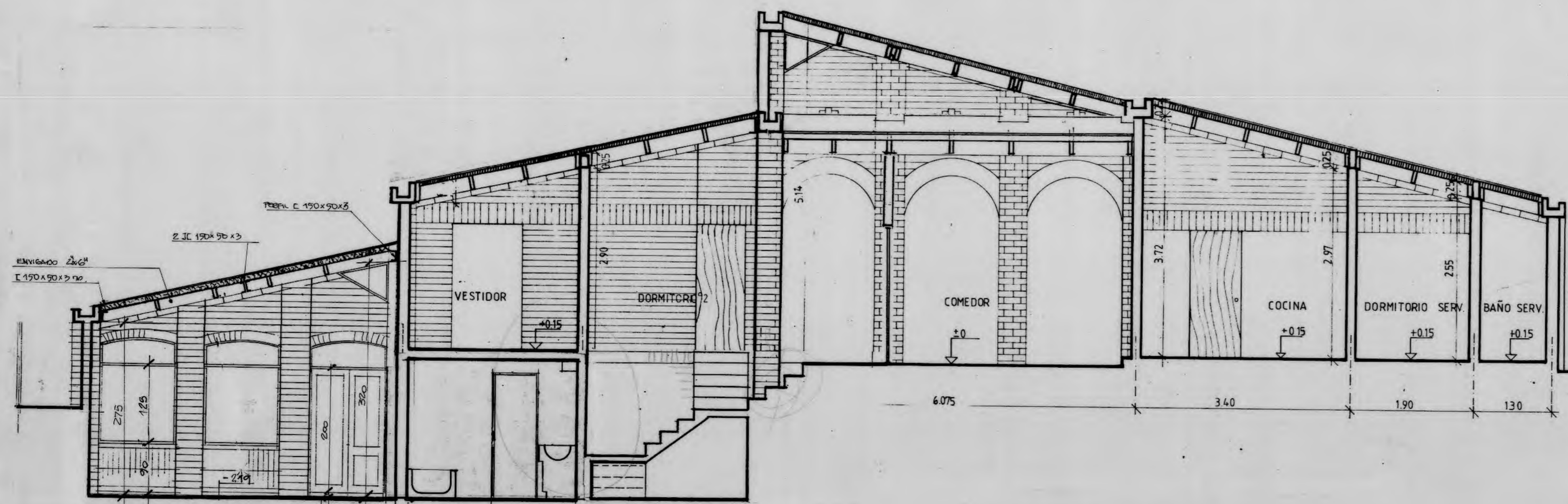
FECHA	LAMINA
MAYO '95	1
ESCALA	DE 3
1:50	



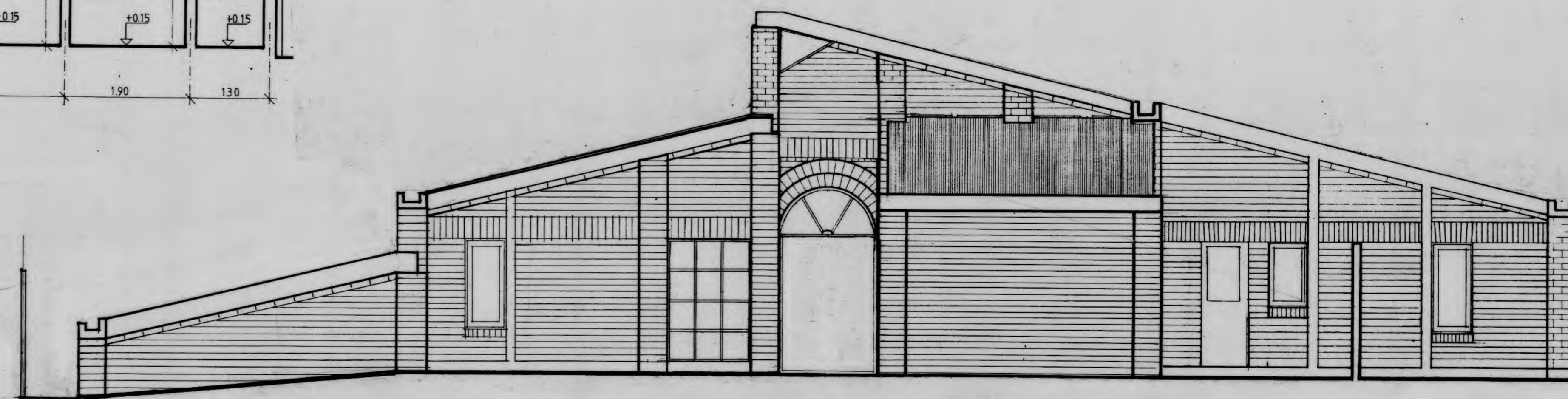
ELEVACION ORIENTE



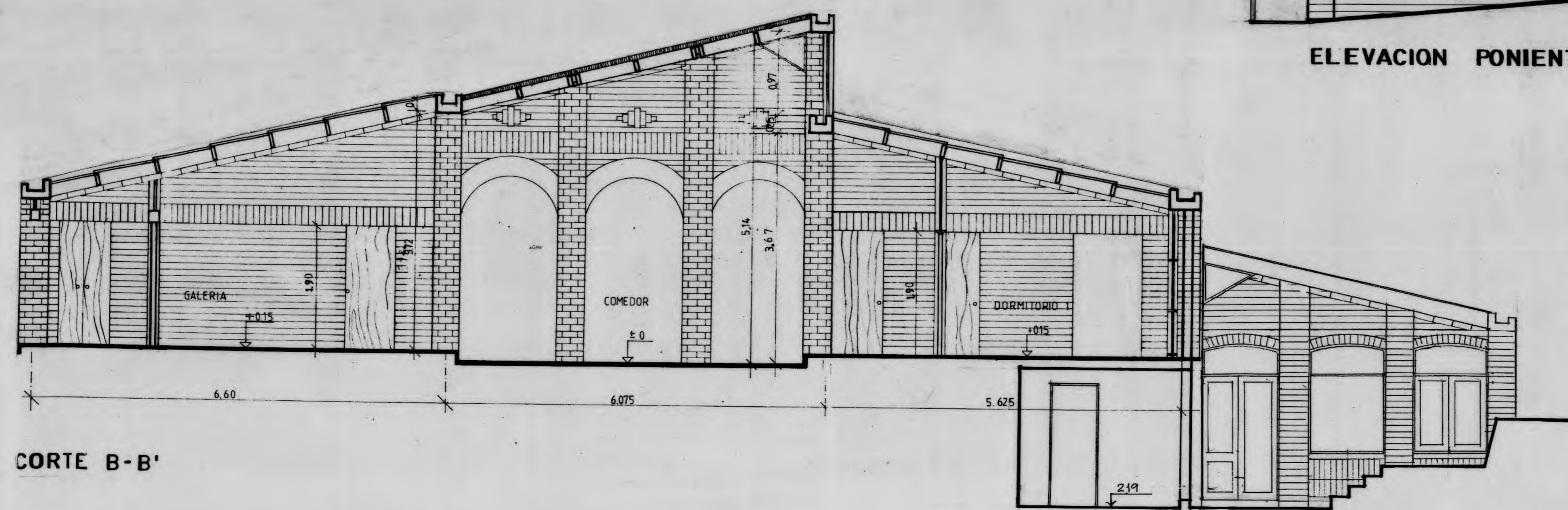
ELEVACION NORTE



CORTE C-C'



ELEVACION PONIENTE



CORTE B-B'

**FERNANDO CASTILLO VELASCO**  
**e**  
**IGNACIO TRONCOSO KEYMER**  
 ARQUITECTOS

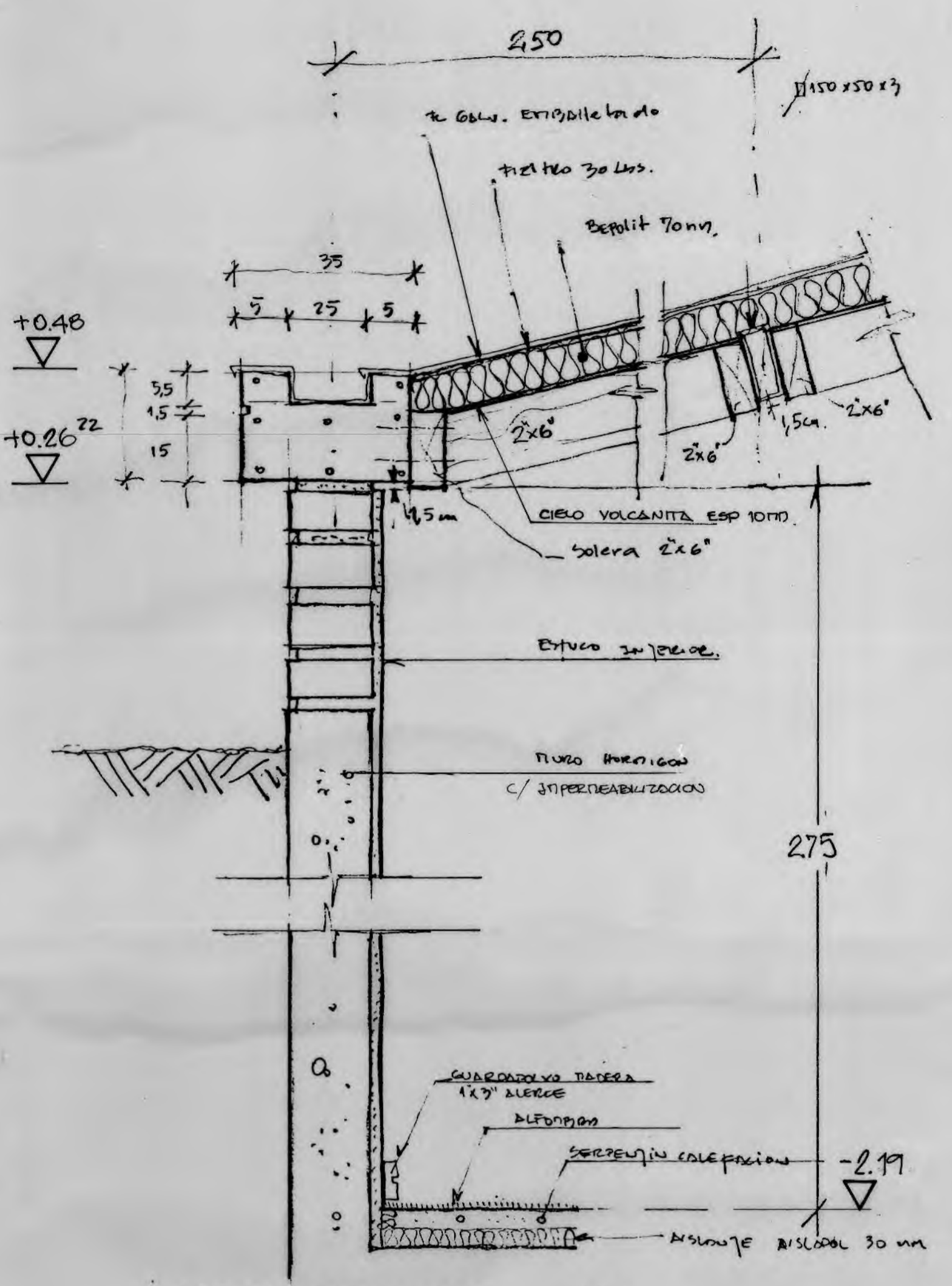
PROPIETARIO  
 F. ECHEVERRIA - F. ALCAINO

PROYECTO  
 AMPLIACION CASA ECHEVERRIA-ALCAINO  
 UBICACION

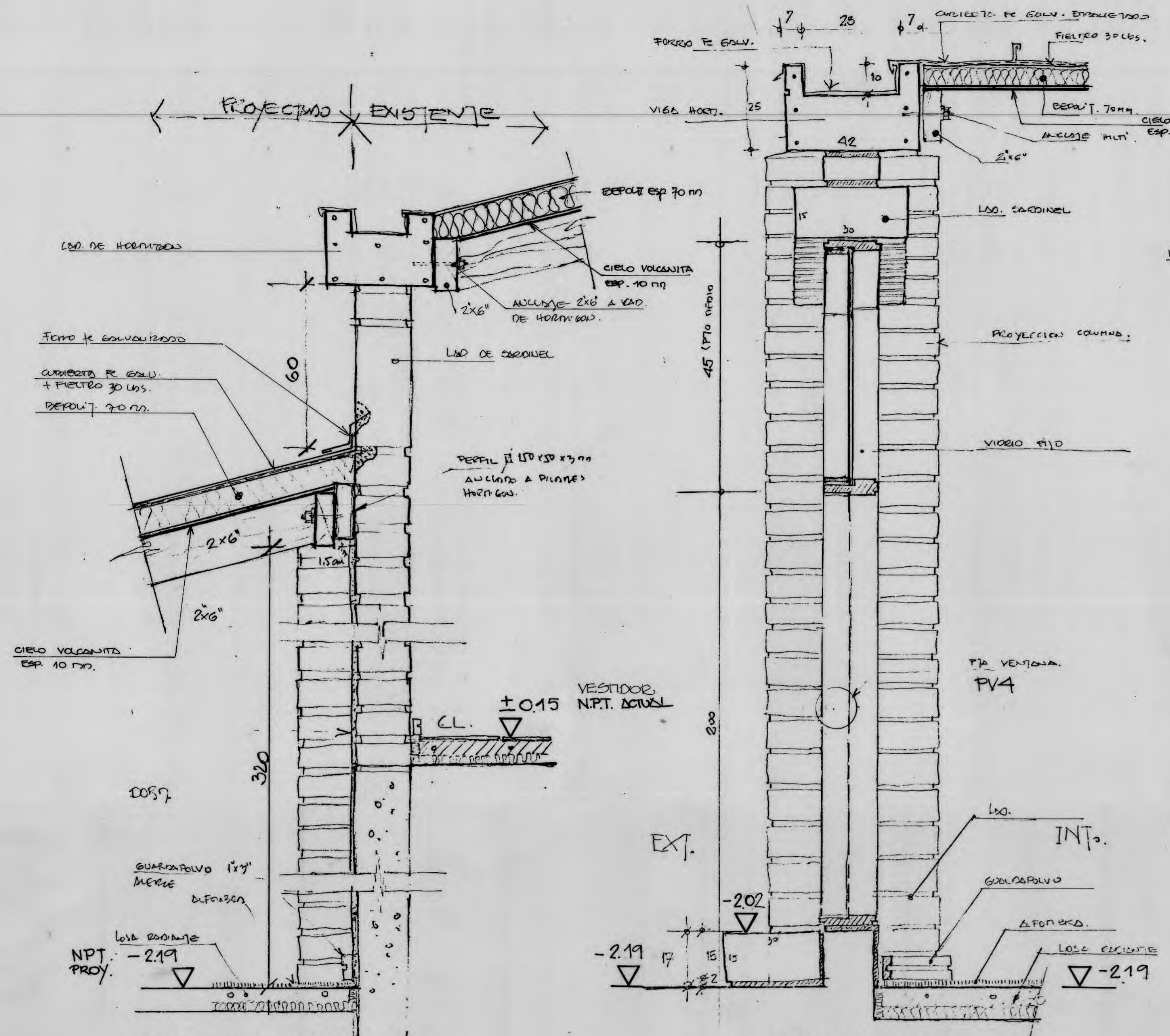
CONTENIDO  
 ELEVACIONES Y CORTES

ARD. REVIS ITK	ARD. ENCARG ITK	DIBUJO MFD
-------------------	--------------------	---------------

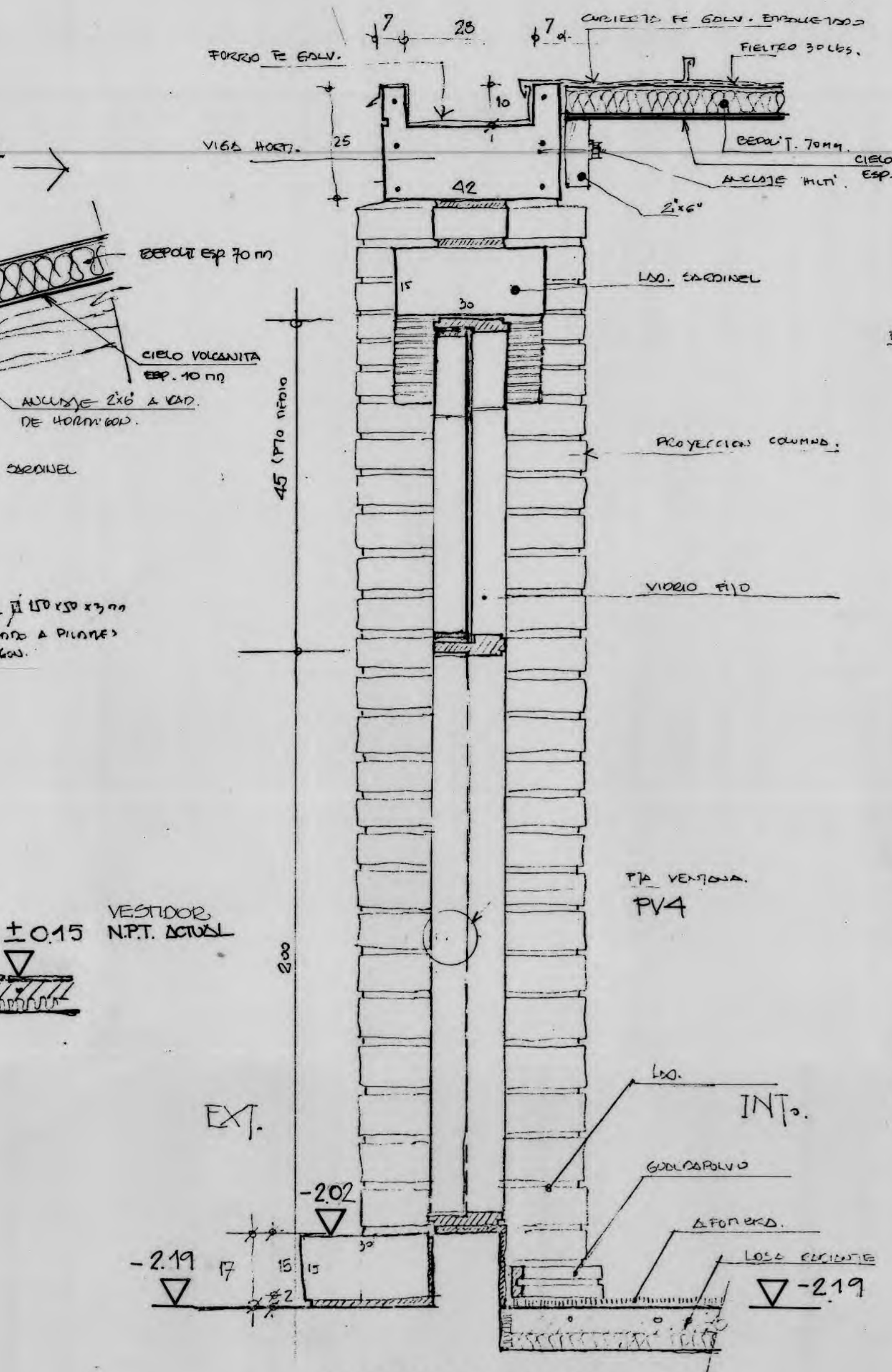
FECHA MAYO '95	LAMINA 2
ESCALA 1:50	DE 3



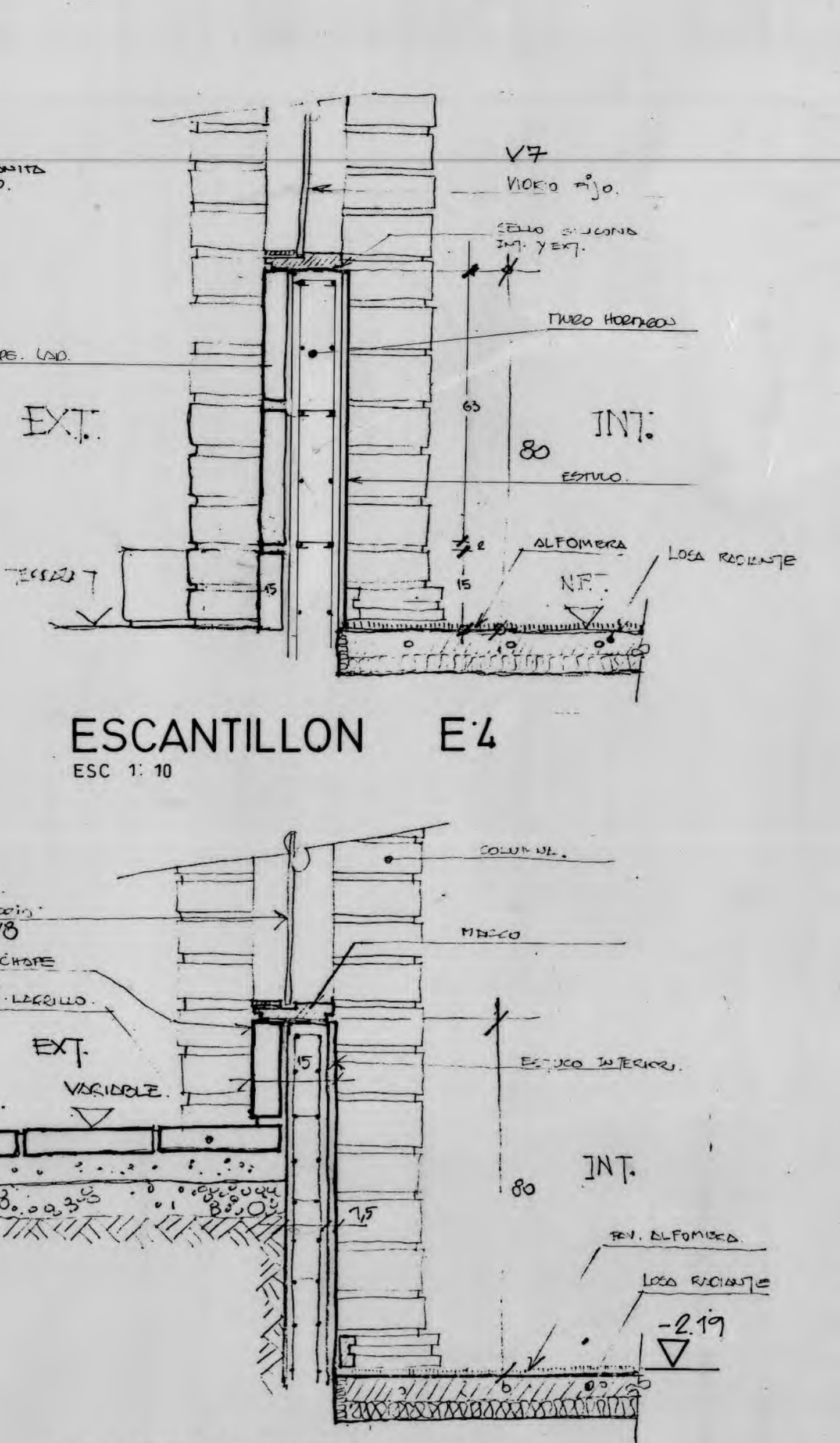
ESCANTILLON E1  
ESC 1:10



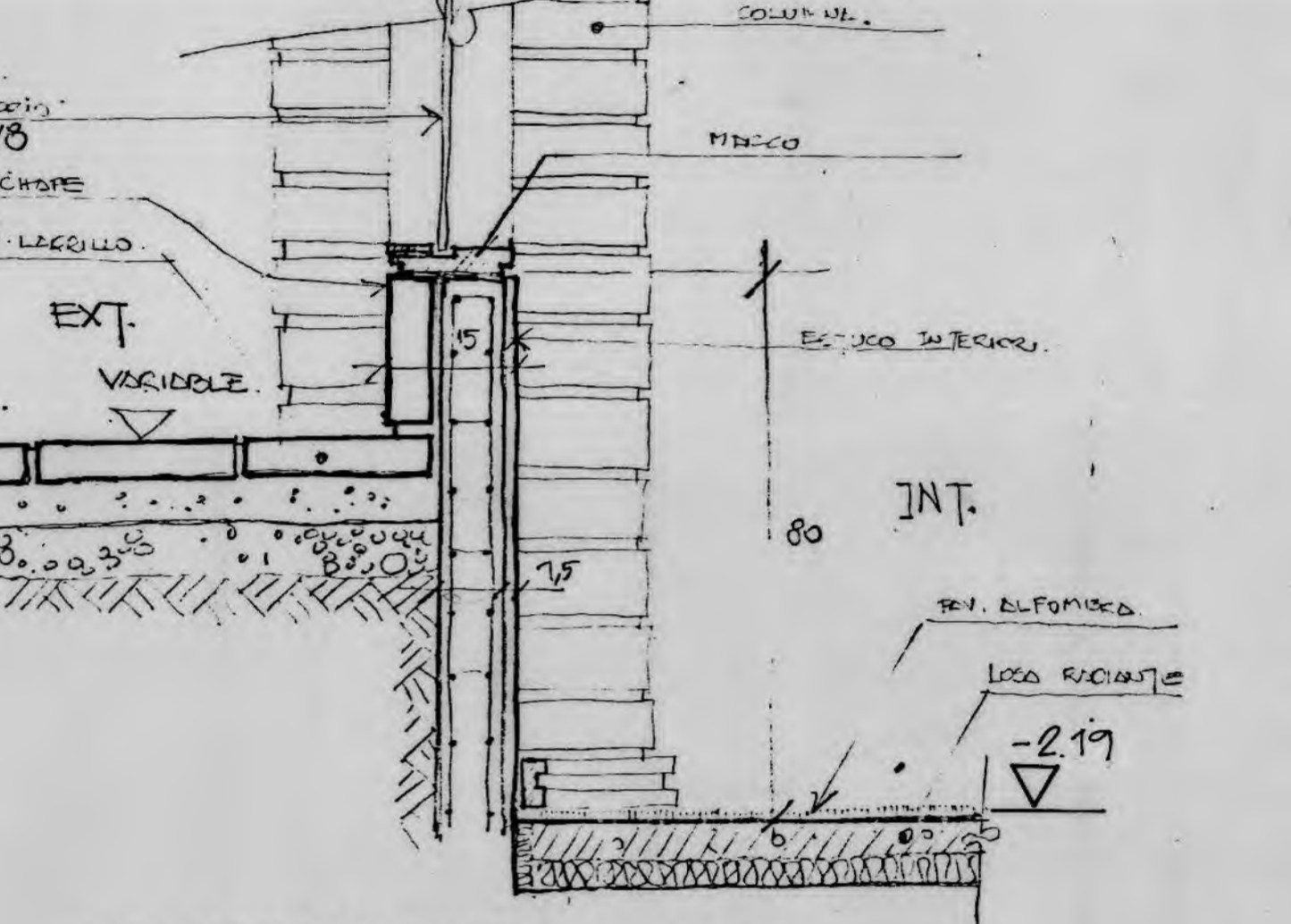
ESCANTILLON E2  
ESC 1:10



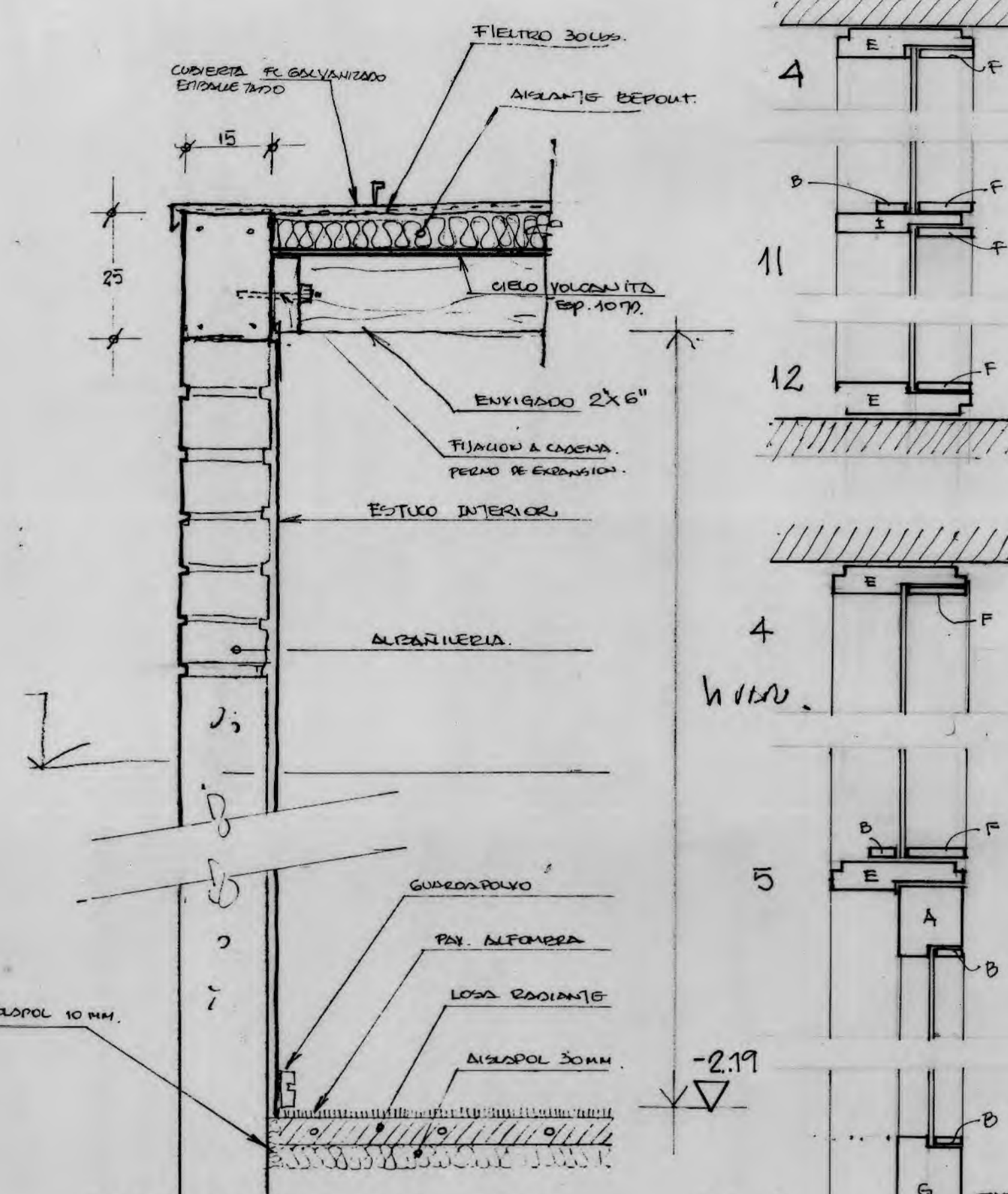
ESCANTILLON E3  
ESC 1:10



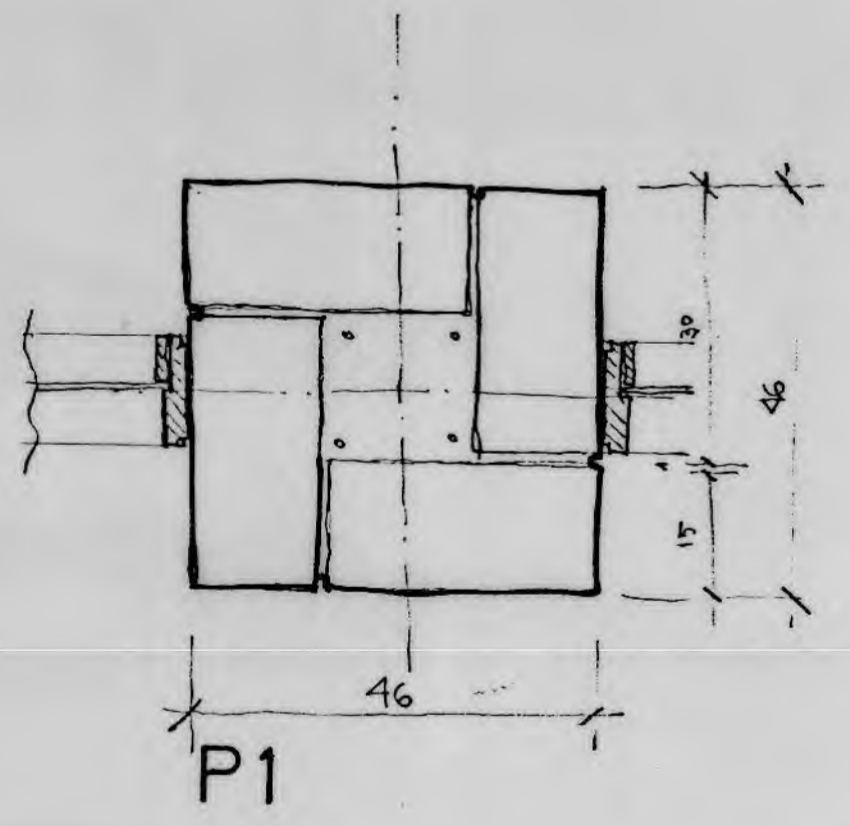
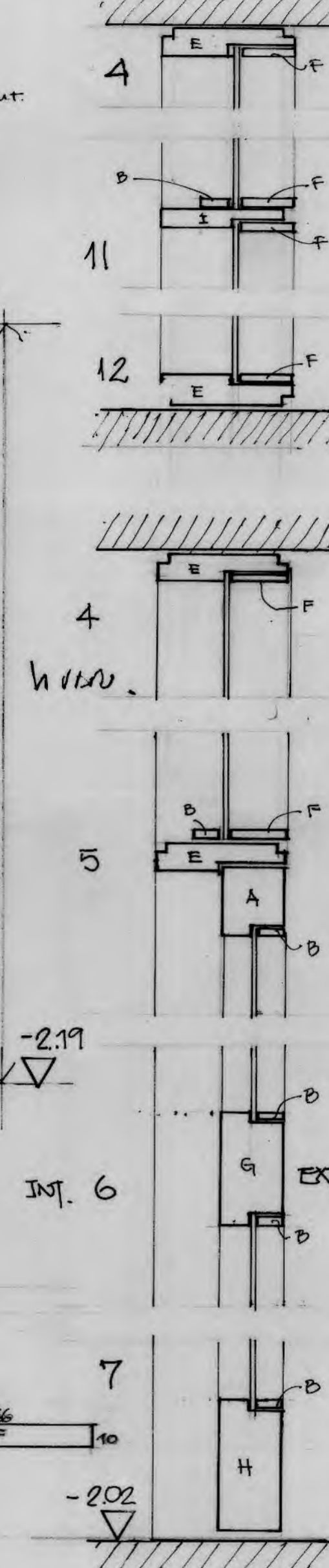
ESCANTILLON E4  
ESC 1:10



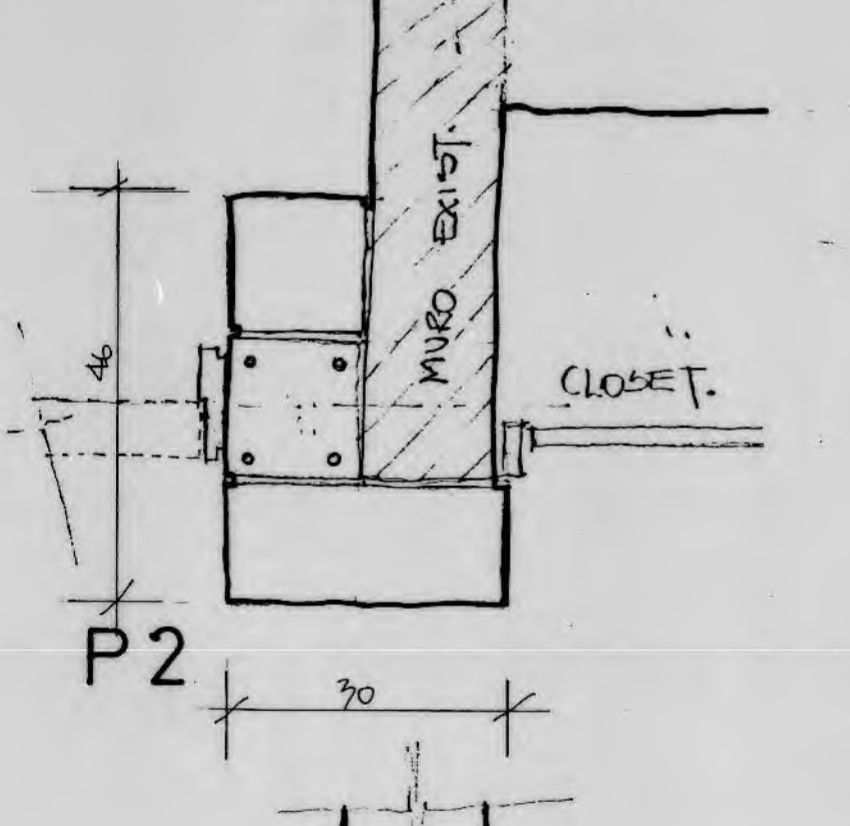
ESCANTILLON E5  
ESC 1:10



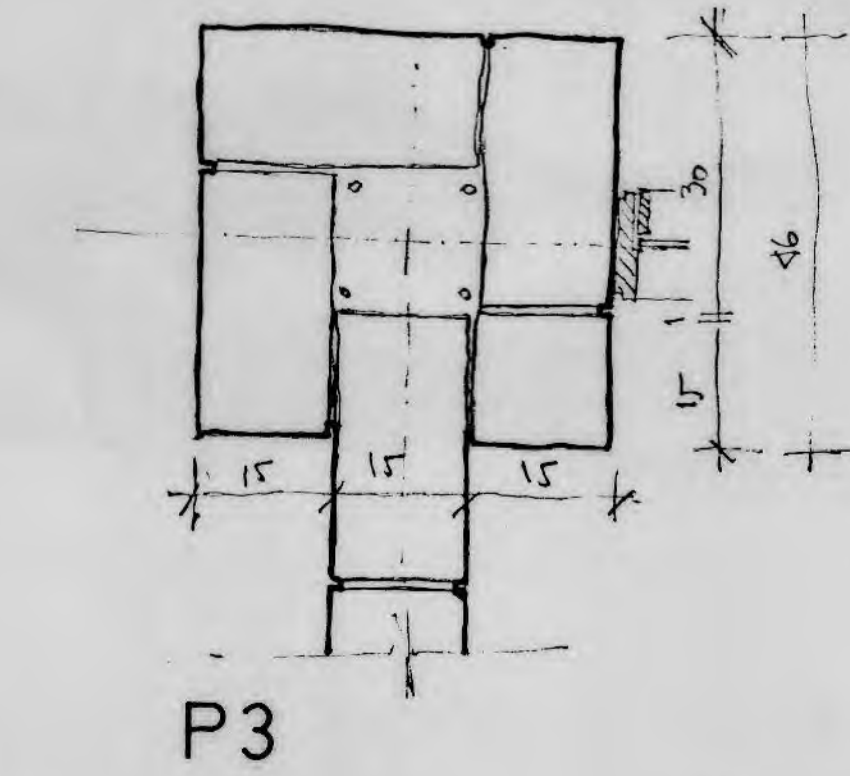
ESCANTILLON E6  
ESC 1:10



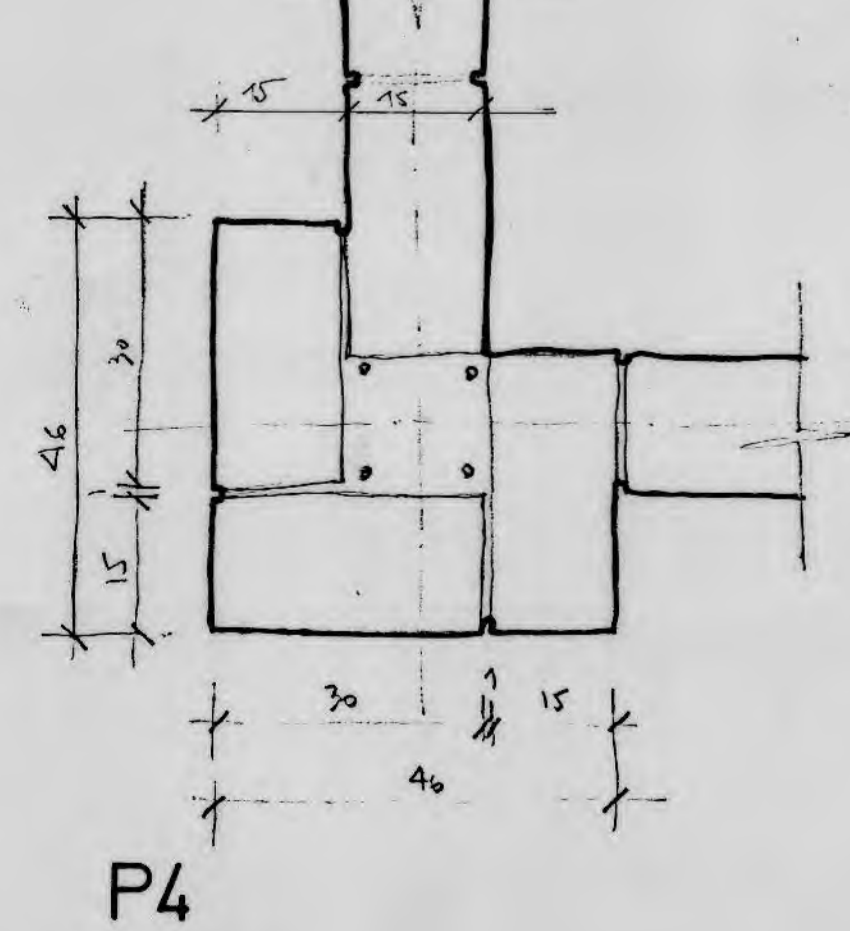
P1



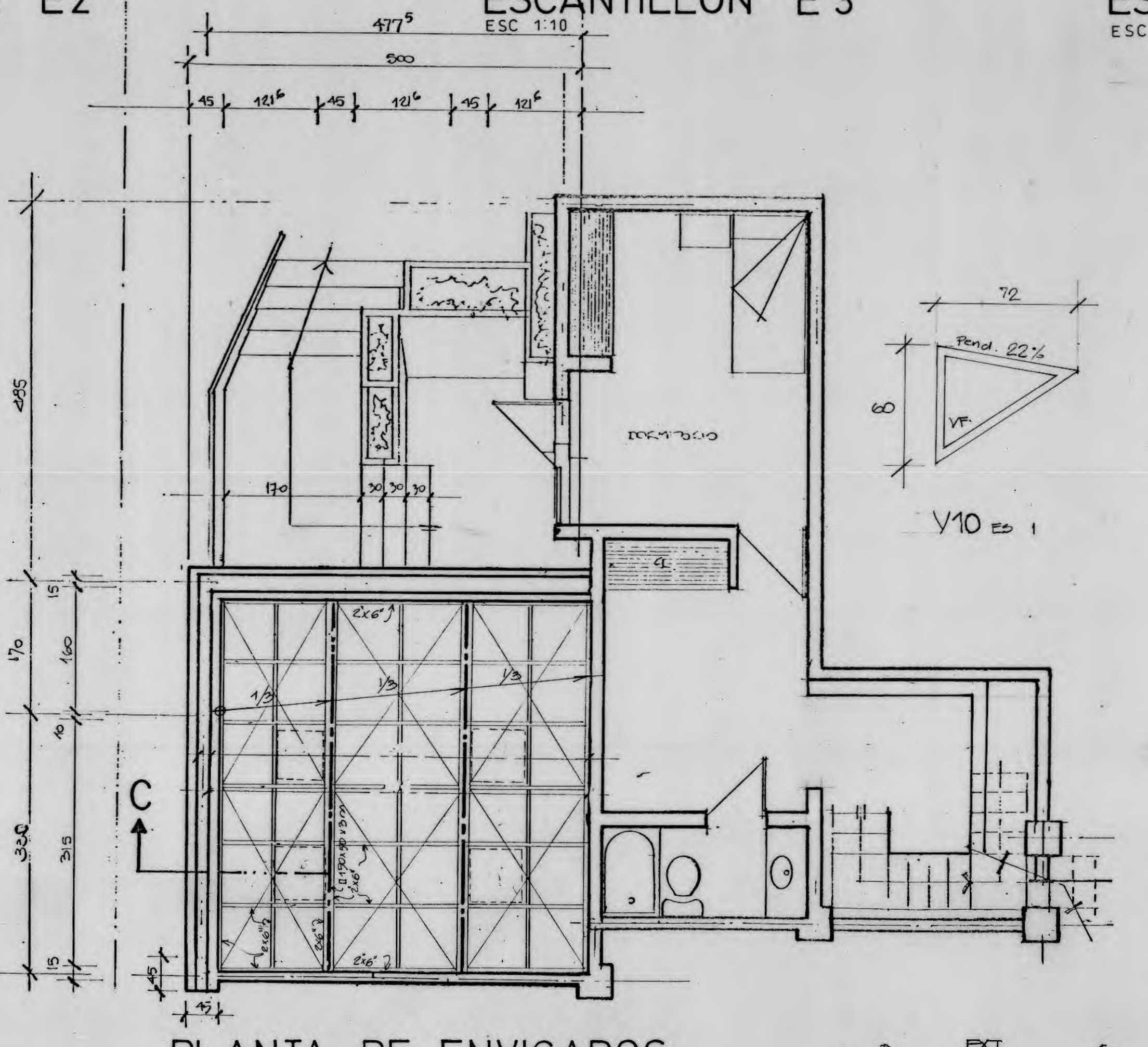
P2



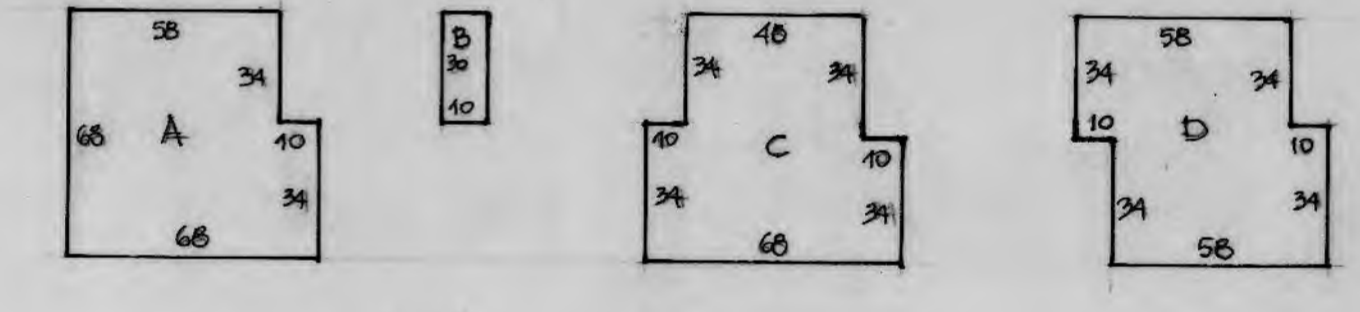
P3



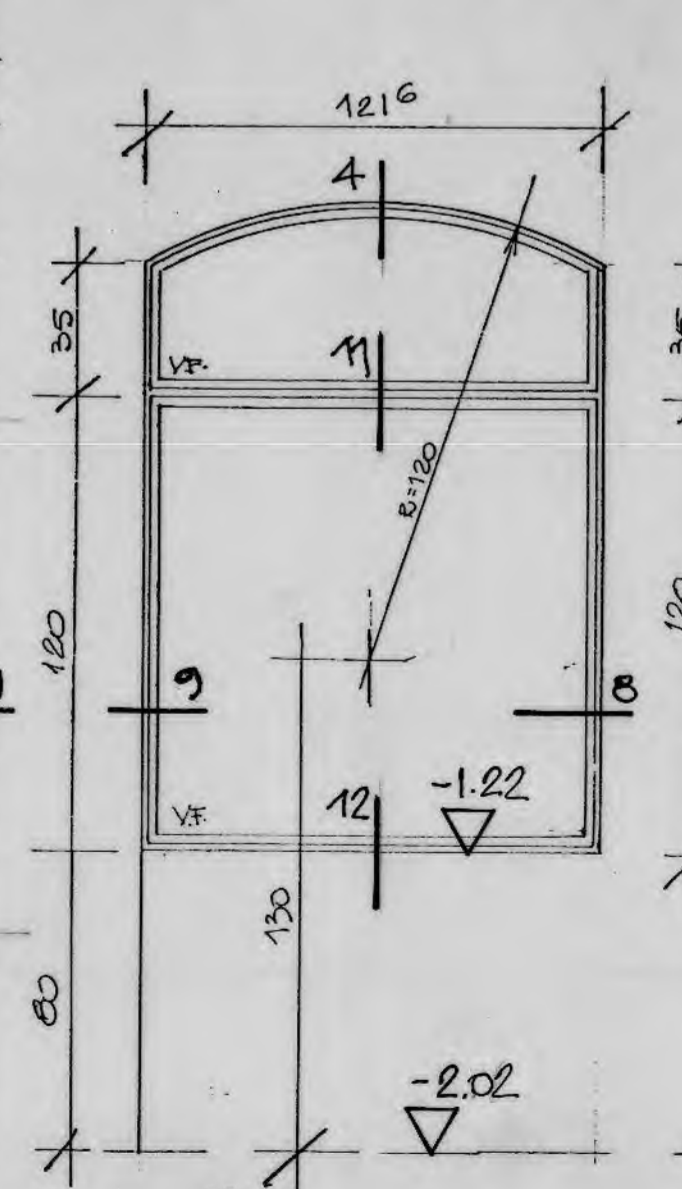
P4



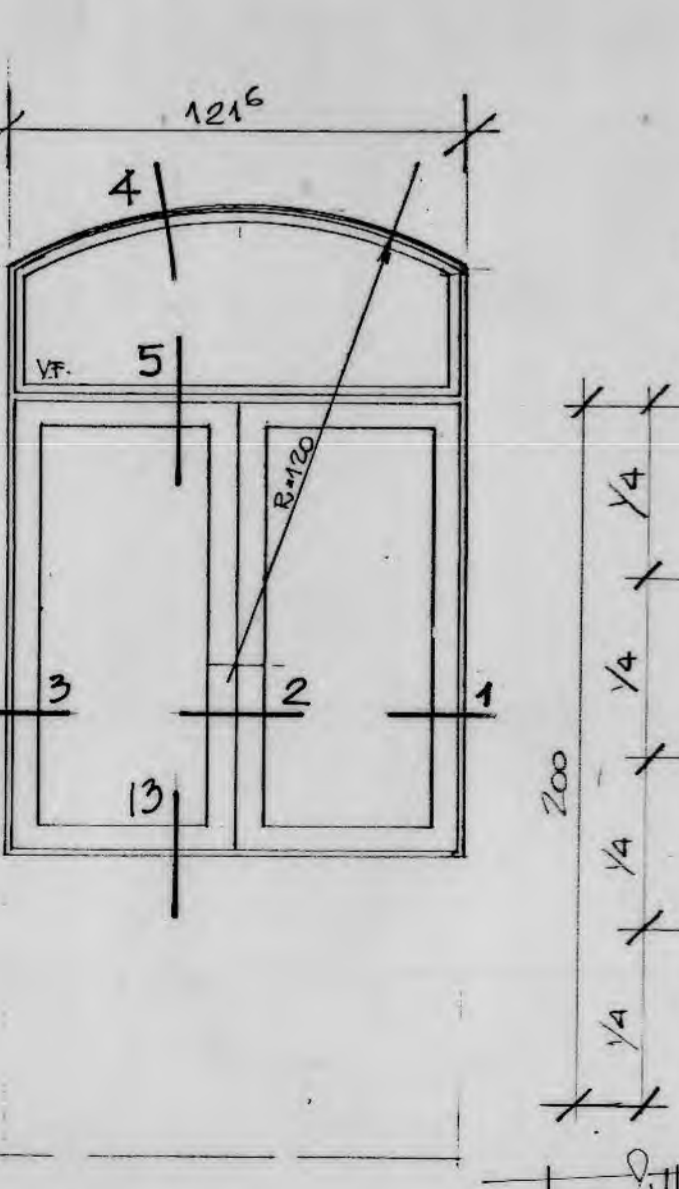
PLANTA DE ENVIGADOS  
ESC 1:50



PV4 ES1

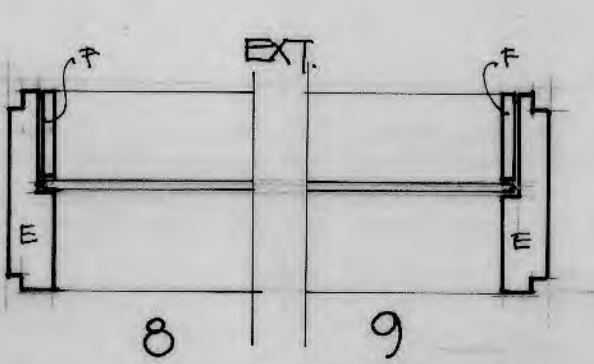


V7 ES1

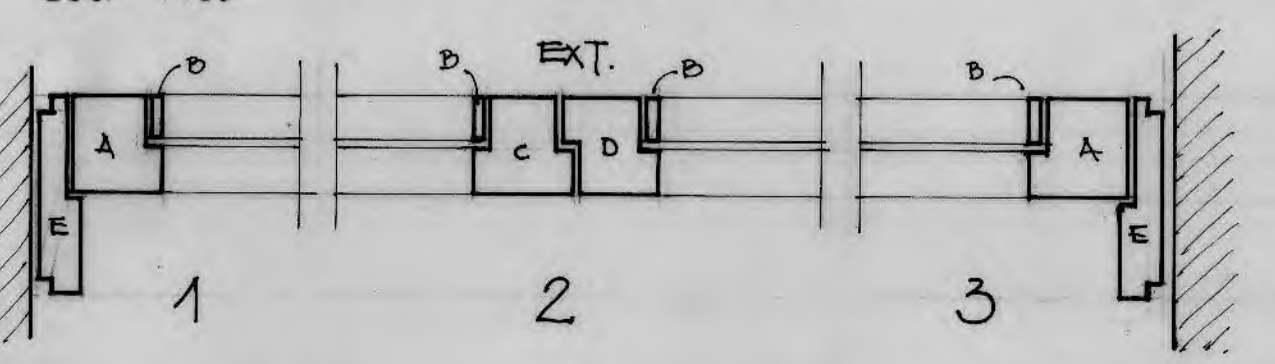


V8 ES1

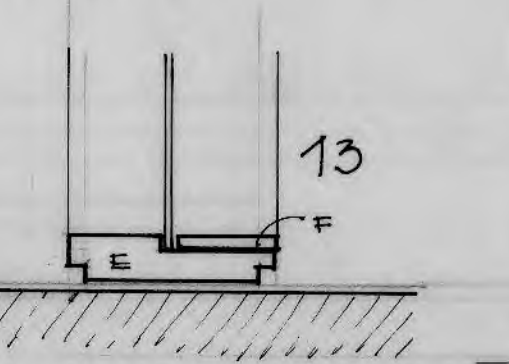
DETALLE VENTANAS Y PTA. VENTANA  
ESC 1:20



8



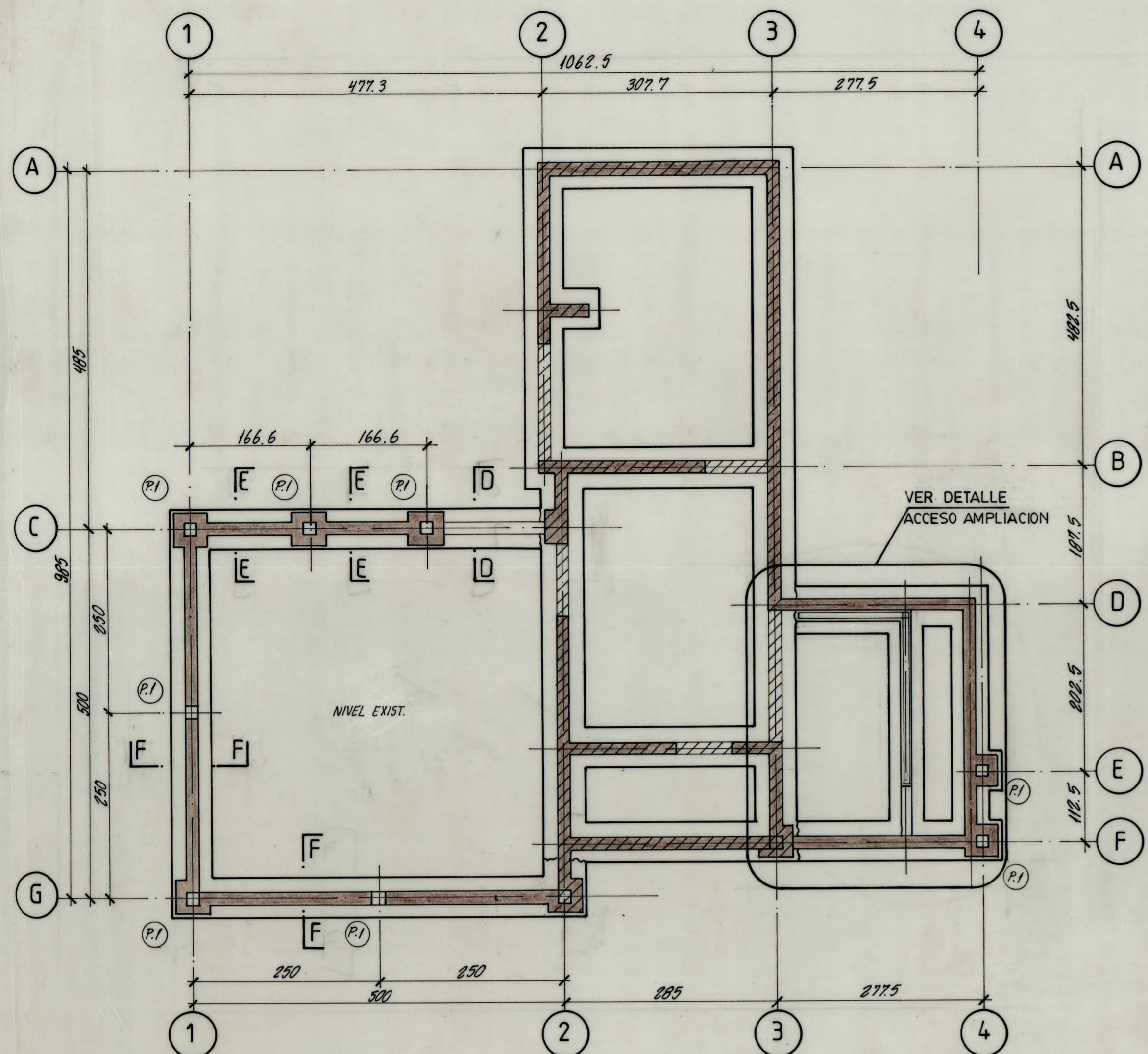
1



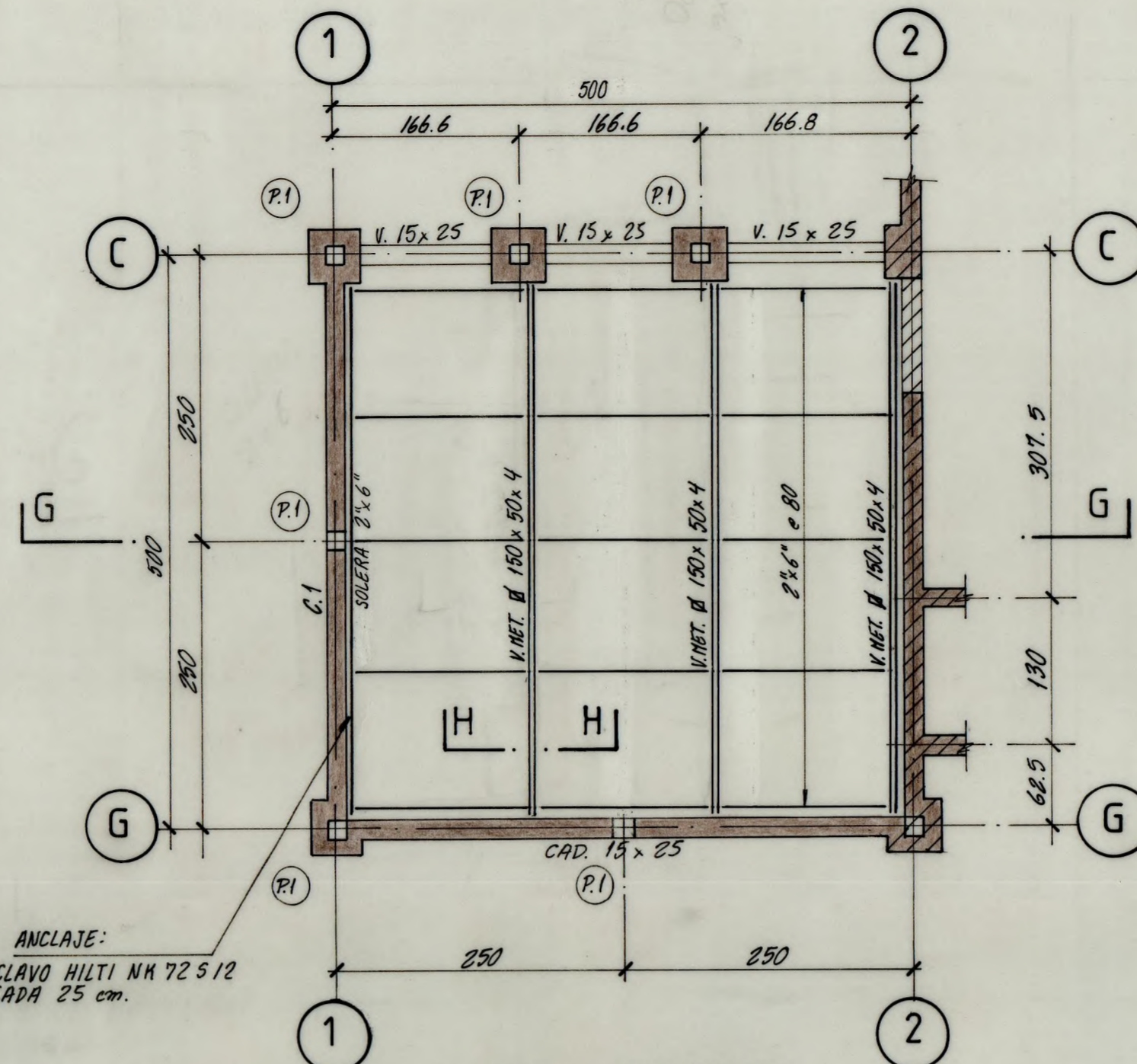
13

<b>FERNANDO CASTILLO VELASCO</b> e <b>IGNACIO TRONCOSO KEYMER</b> ARQUITECTOS		
PROPIETARIO		
F. ECHEVERRIA - F. ALCAINO		
PROYECTO		
AMPLIACION CASA ECHEVERRIA-ALCAINO		
UBICACION		
CONTENIDO		
ESCANTILLONES PTA. Y VENTANAS		
ARQ. REVIS ITK	ARQ. ENCARG ITK	DIBUJO MFD
FECHA JUL '95	LAV. N.º <b>3</b>	
ESCALA 1:10, 1:20	DE 3	

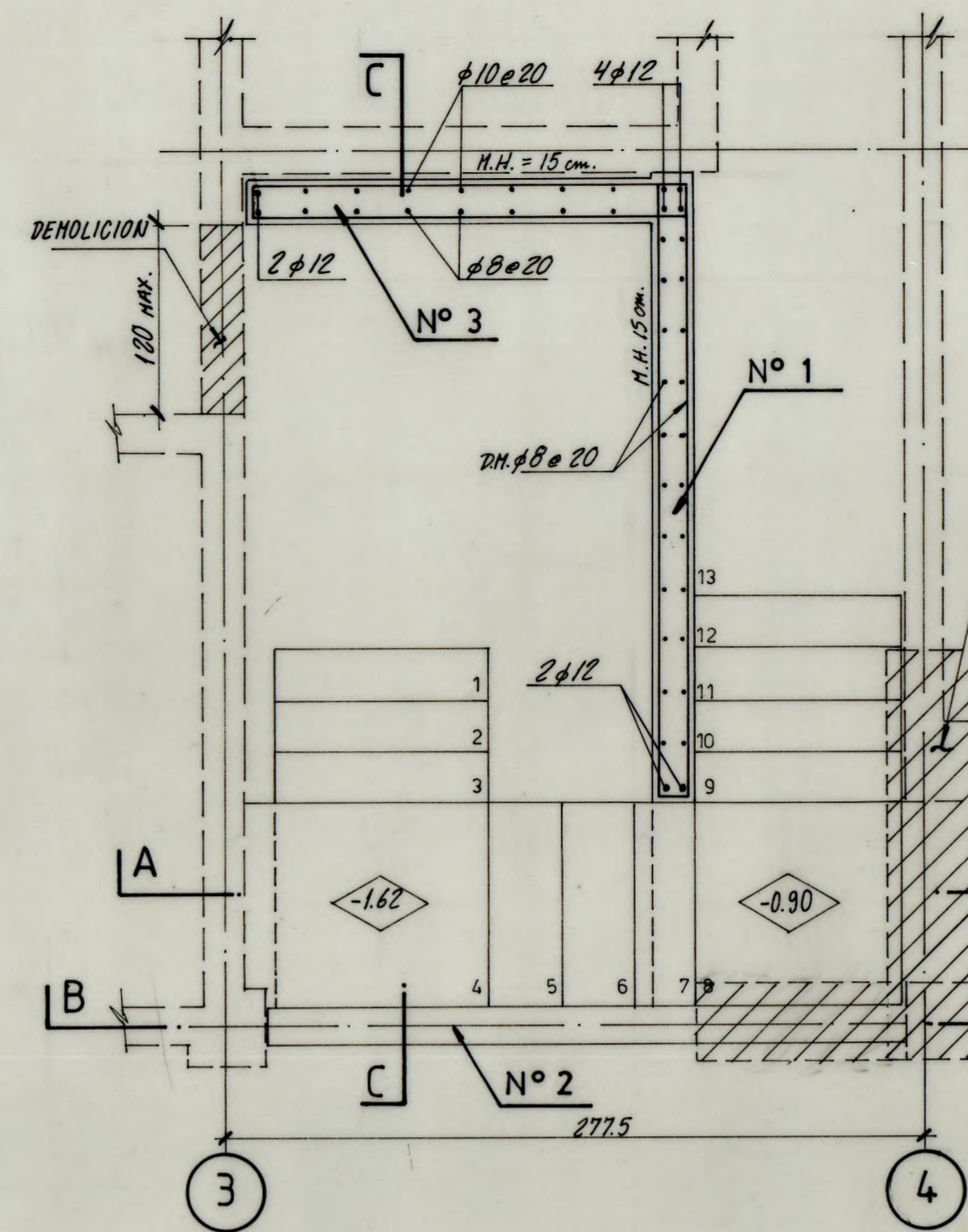




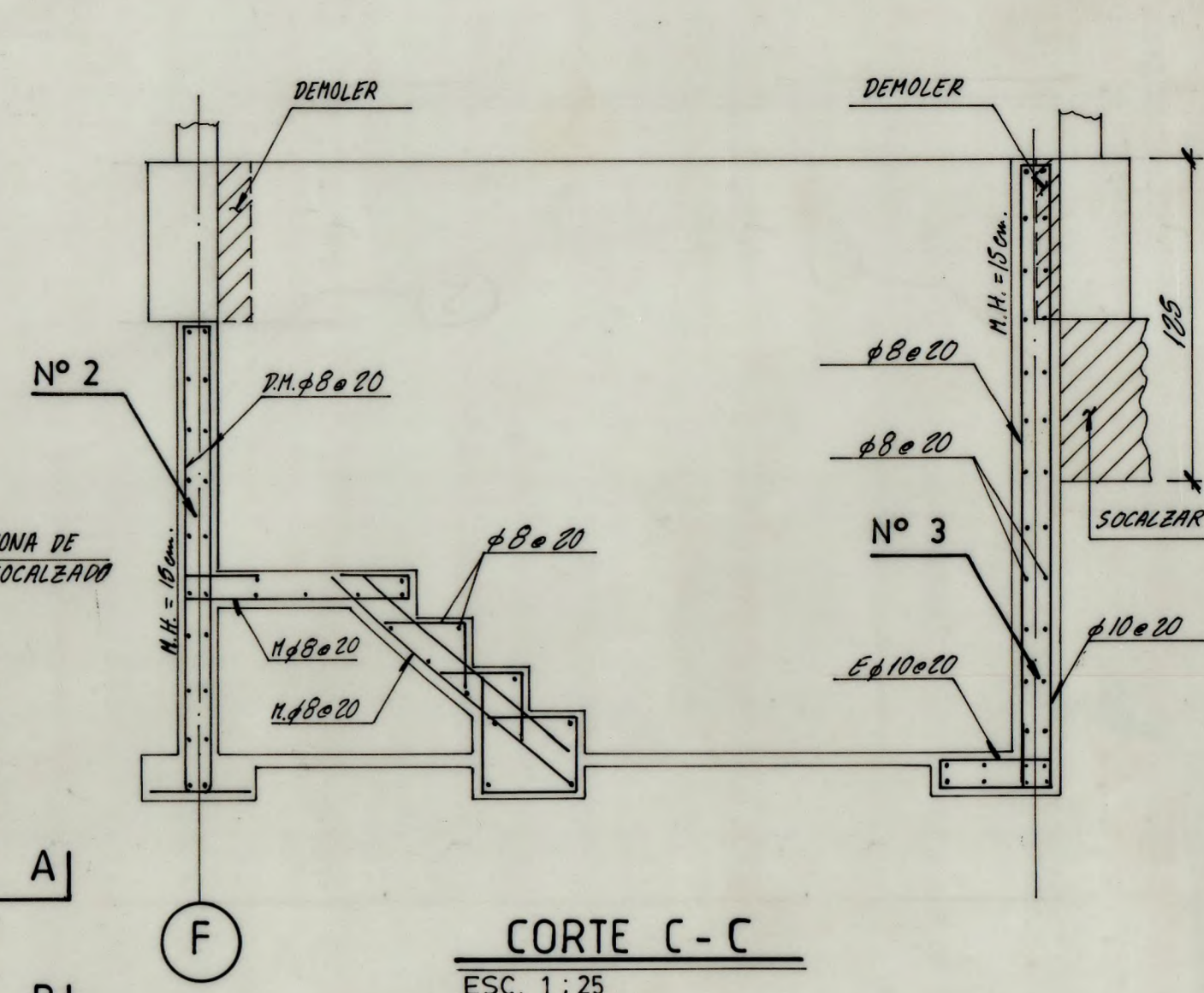
PLANTA FUNDACION  
ESC. 1:50



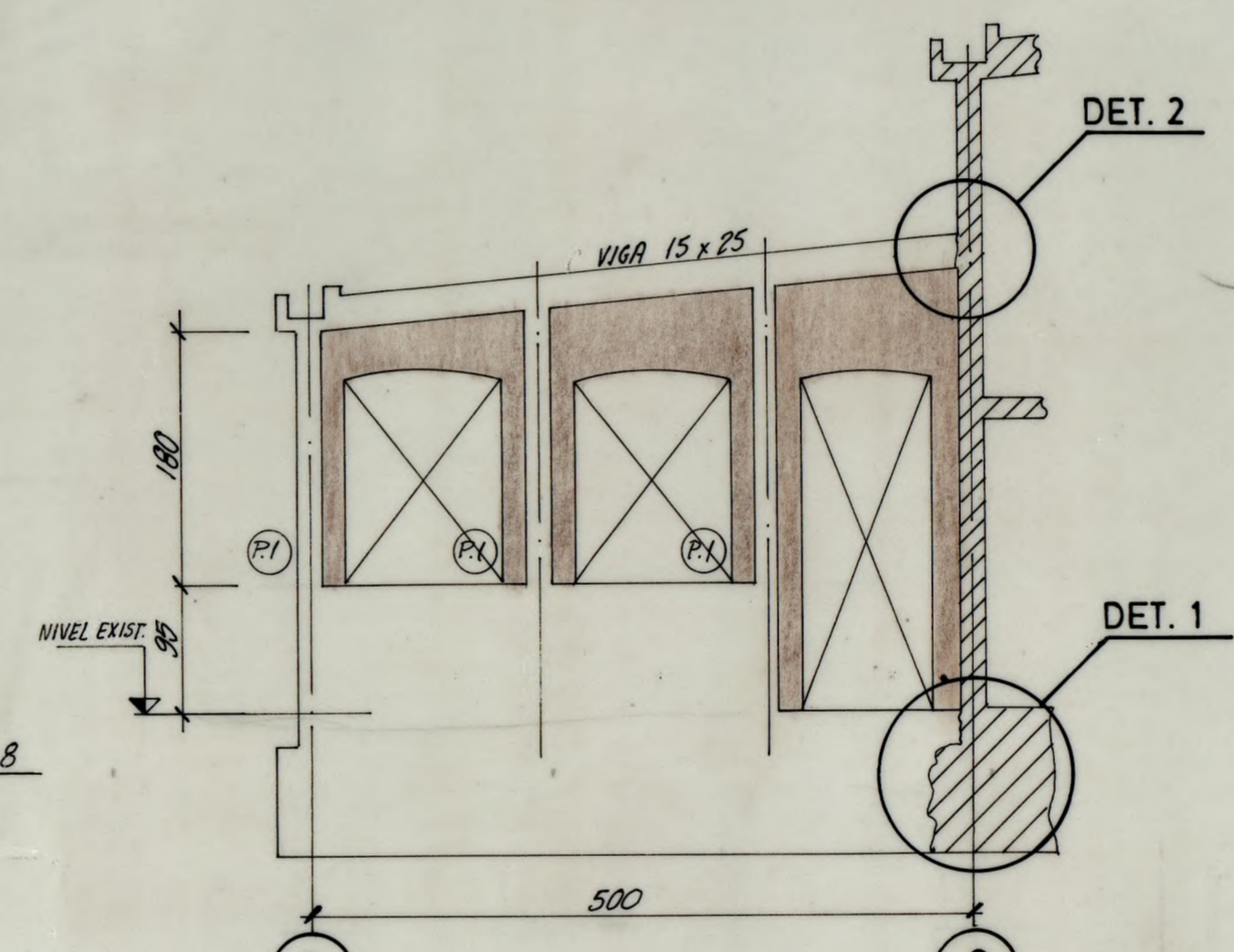
PLANTA ESTRUCTURA  
ESC. 1:50



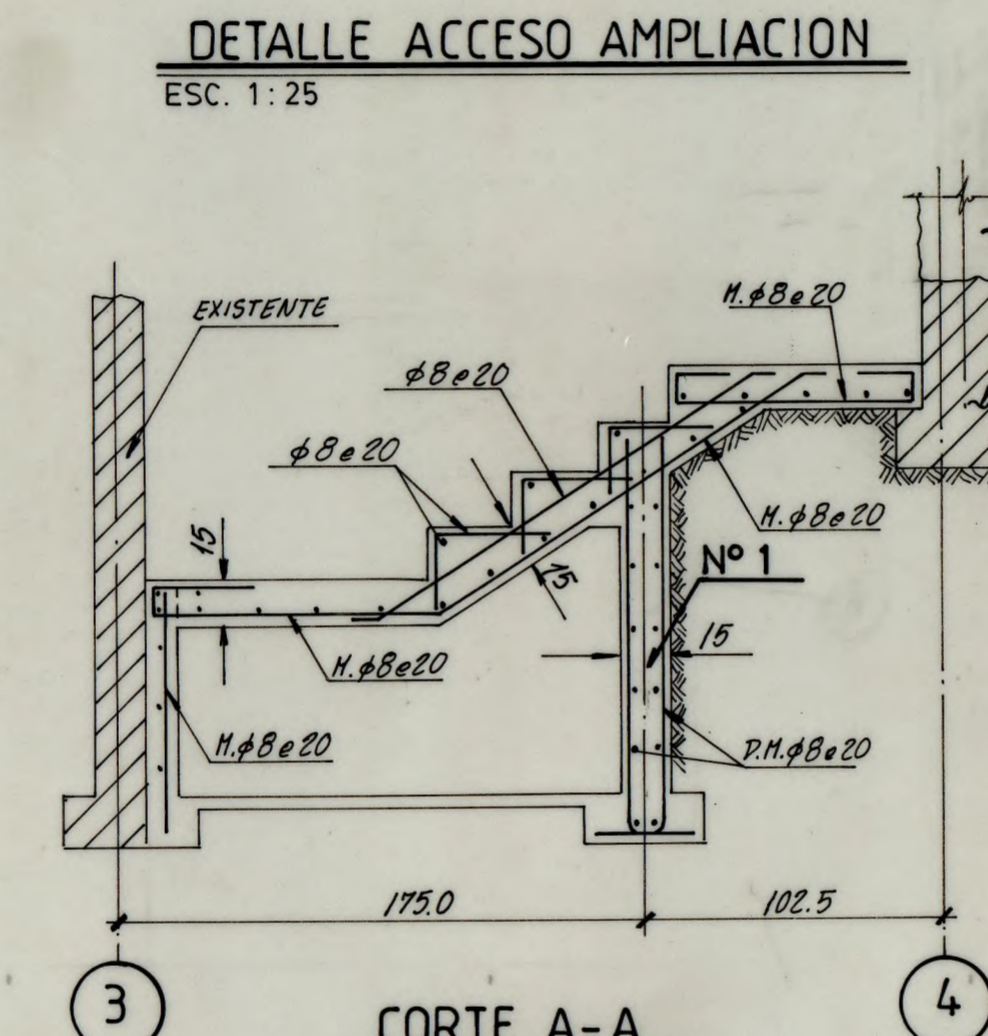
DETALLE ACCESO AMPLIACION  
ESC. 1:25



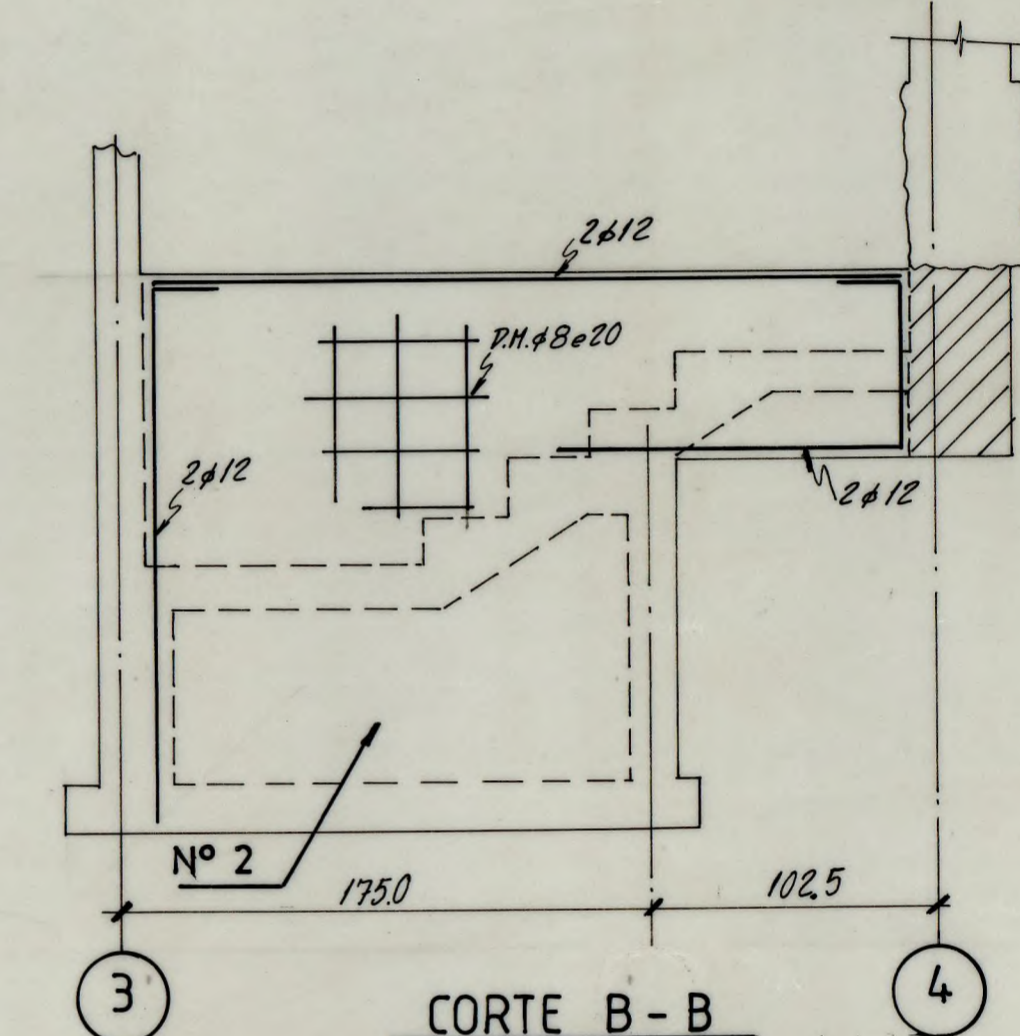
CORTE C-C  
ESC. 1:25



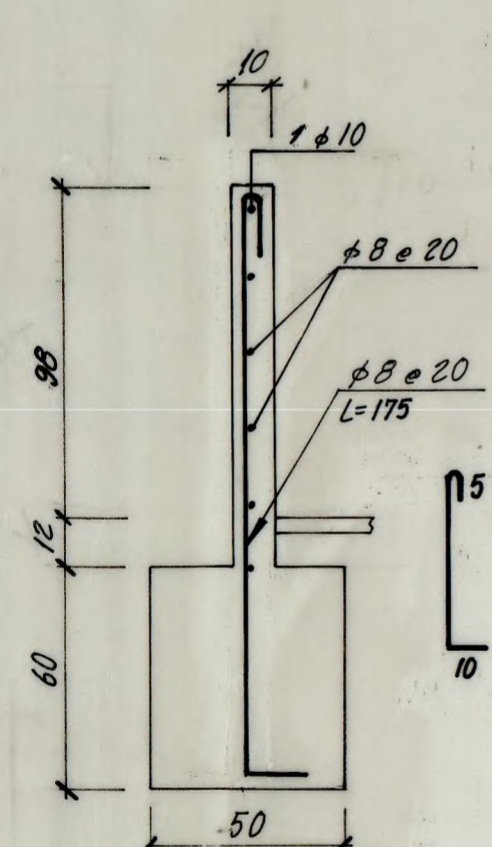
ELEVACION EJE C  
ESC. 1:50



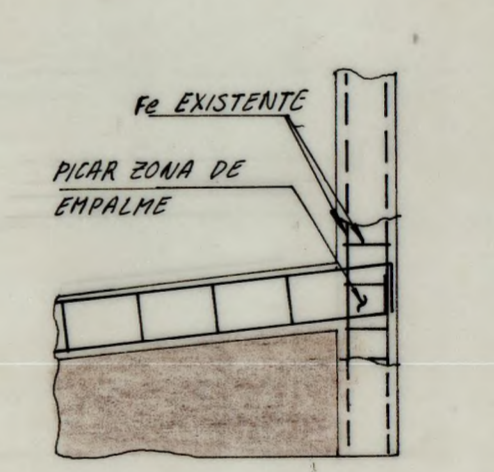
CORTE A-A  
ESC. 1:25



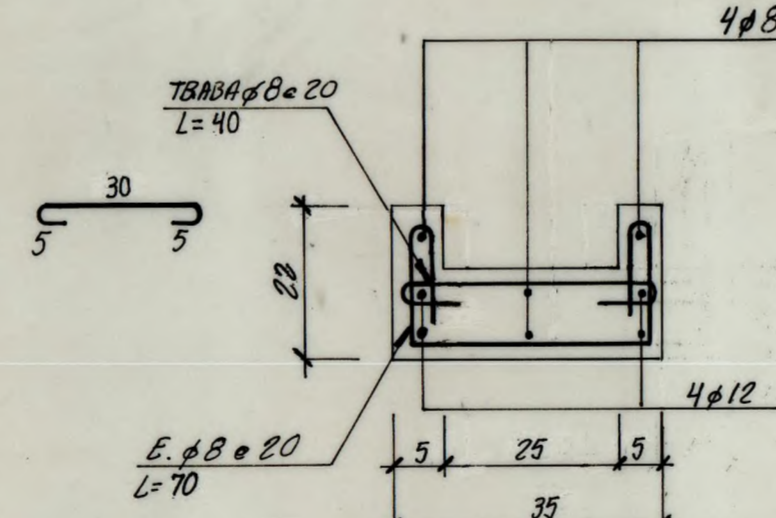
CORTE B-B  
ESC. 1:25



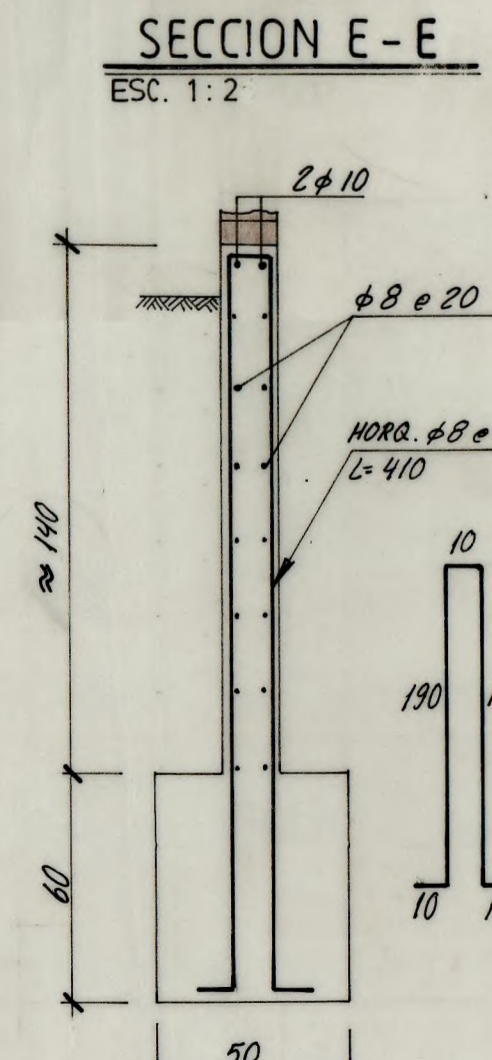
SECCION D-D  
ESC. 1:2



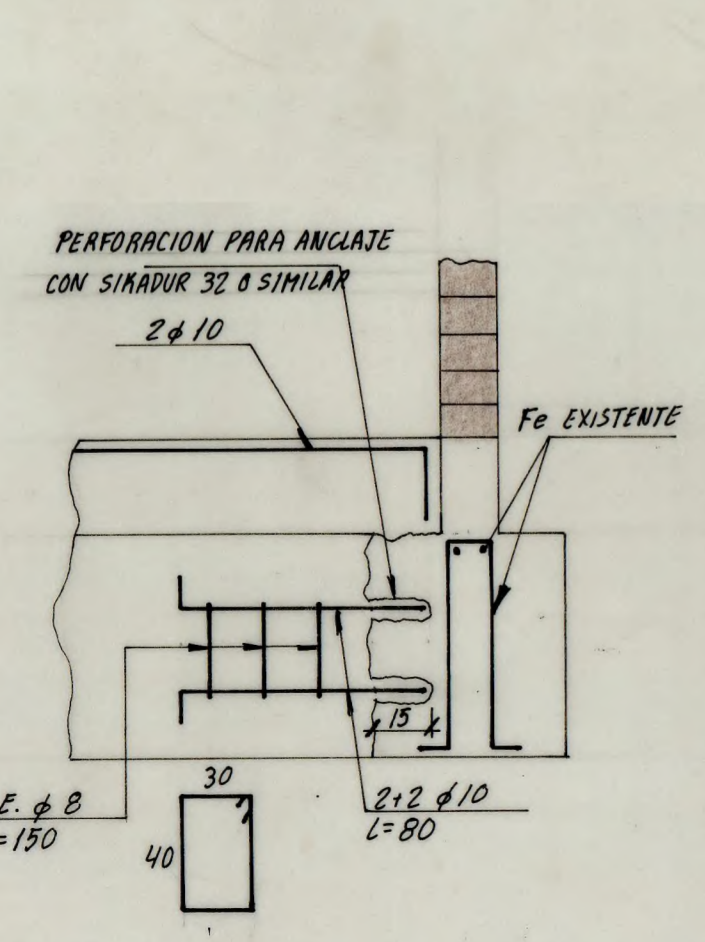
DETALLE 2  
ESC. 1:20



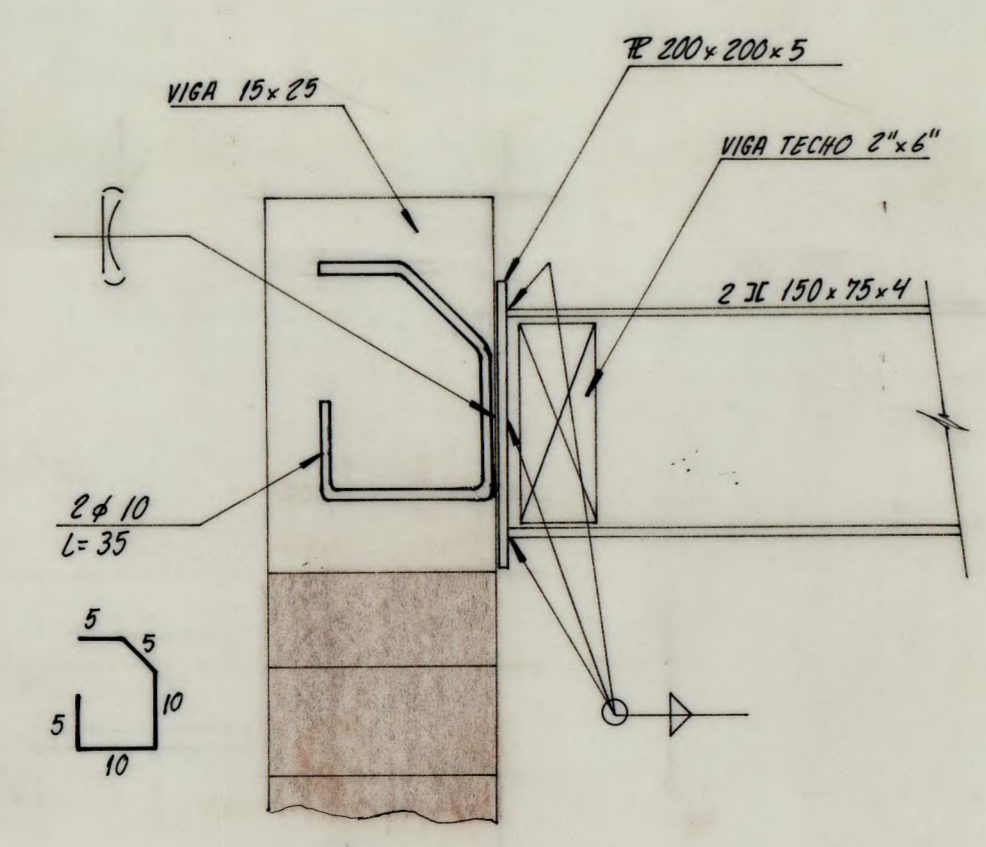
CADENA C.1  
ESC. 1:10



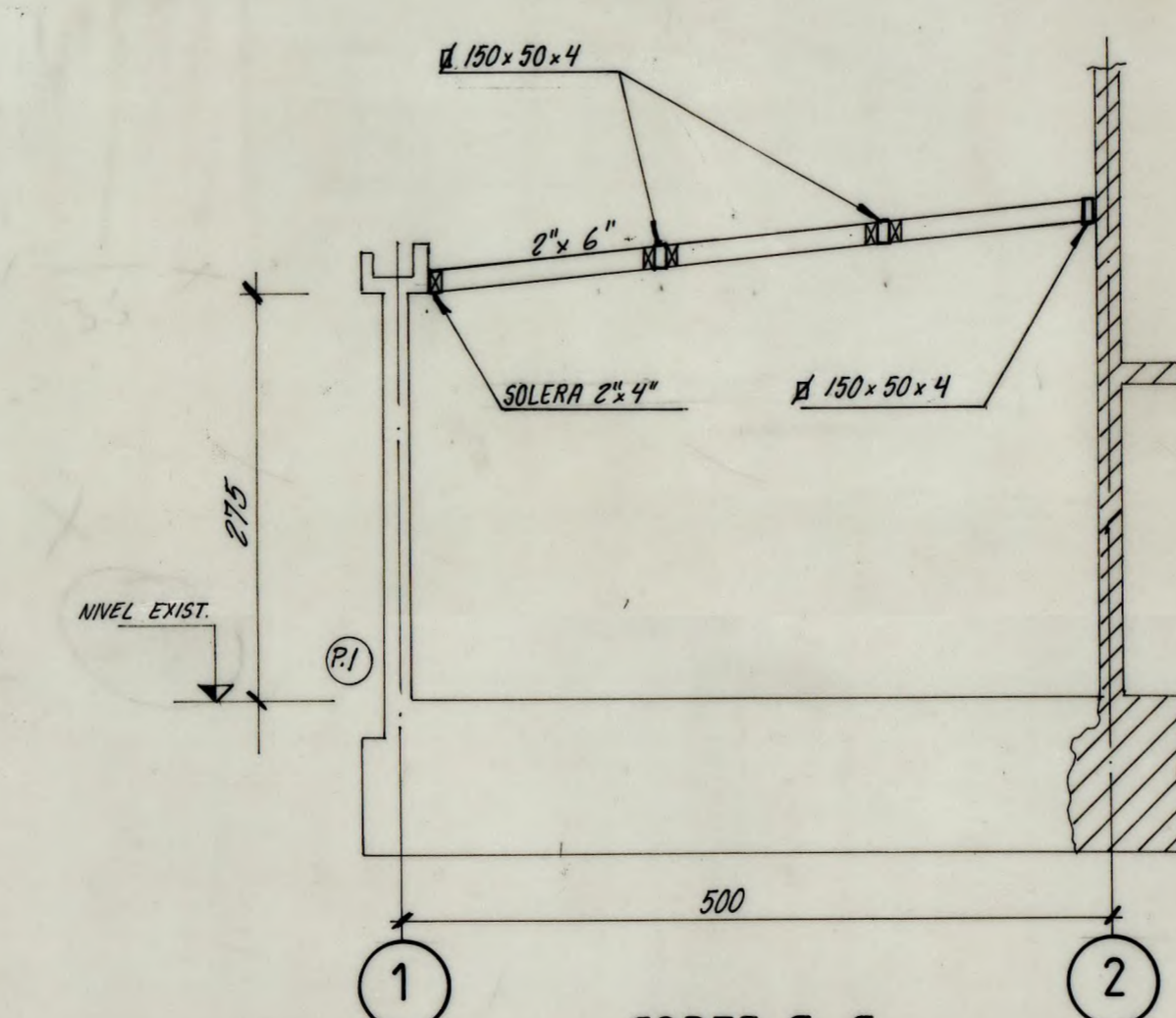
SECCION E-E  
ESC. 1:2



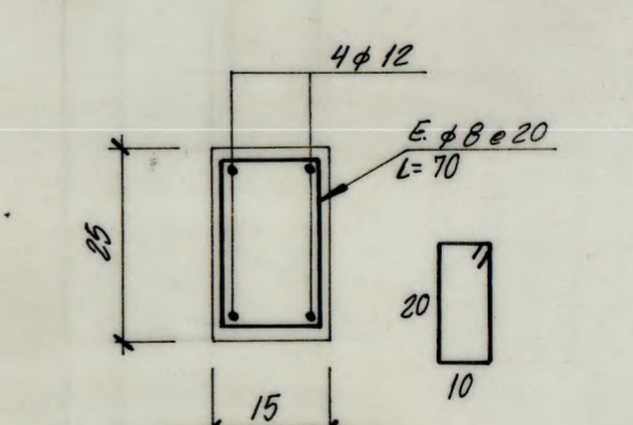
DETALLE 1  
ESC. 1:20



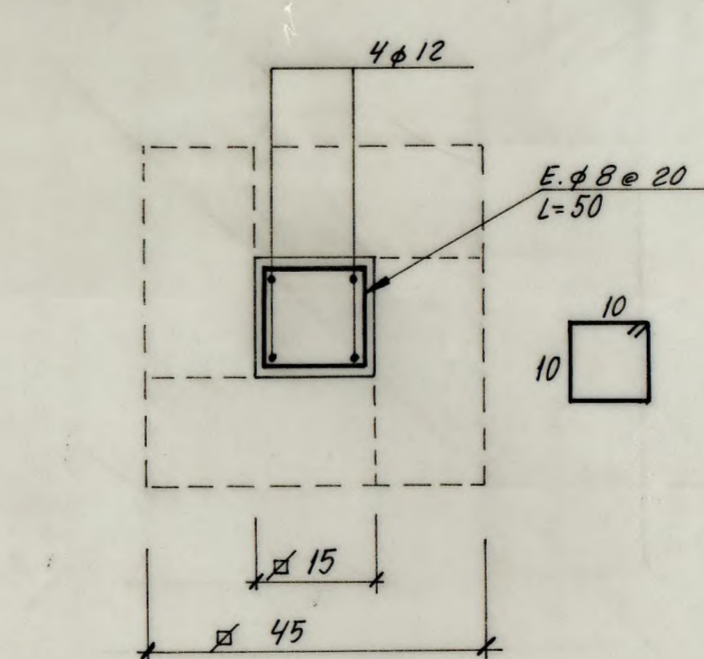
ANCLAJE VIGA METALICA  
ESC. 1:5



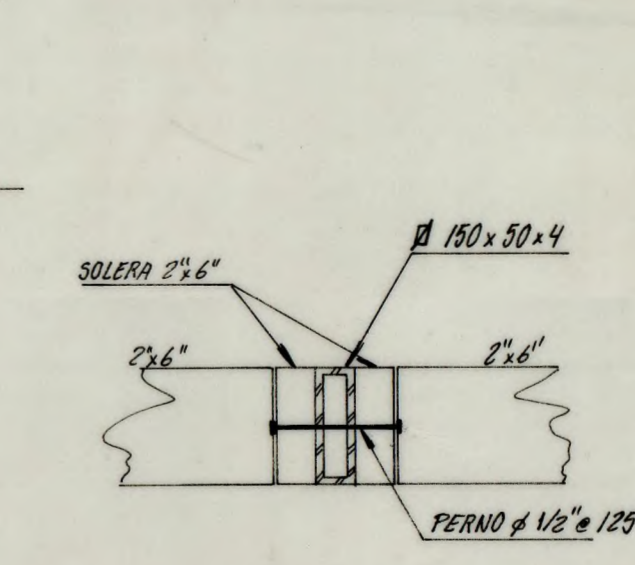
CORTE G-G  
ESC. 1:50



CADENA Y VIGA 15x25  
ESC. 1:10



DETALLE PILAR P.1  
ESC. 1:10



CORTE H-H  
ESC. 1:10

SECUENCIA DE FAENA	
1ª	MURO Nº 1
2ª	MURO Nº 2
3ª	MURO Nº 3
4ª	SOLCALZADO
5ª	GRABADO

ESPECIFICACIONES TECNICAS	
HORMIGON FUNDACION:	
- CEMENTO:	170 Kg/cm <sup>3</sup> + 20% BOLON DESPLAZADOR
- SOBRECIMENTO Y MURO DE CONTENSIÓN:	H 25 N.C. = 90 %
- HORMIGON PULVARES, VIGAS Y CADENAS:	H 25 N.C. = 90 %
- ACERO HORMIGON:	A 44 - 28 H
- ACERO ESTRUCTURAL:	A 37 - 24 Es
- ALBAÑILERIA:	TIPO FISCAL e = 15cm.
- MADERA:	PINO INSIGNE R.R. = 50 H = 15
- CAPACIDAD SOPORTE SUELO:	ds = 1.0 Kg/cm <sup>2</sup> (ESTATICO) ds = 1.5 Kg/cm <sup>2</sup> (DINAMICO)

INGEVI S.A.  
OFICINA CONSULTORA  
INGEVIAL LTDA.  
AV. EJERCITO Nº 467 DEPTO. 33-A  
FONO: 6711035  
*Fernando Pijo*

OBRA: AMPLIACION CASA ECHEVERRIA-ALCAINO			
UBICACION:		ESCALAS: INDICADAS	
CONTENIDO: PLANTA FUNDACION Y ESTRUCTURA		L.A.M. Nº 1/1	
CORTES Y DETALLES		FECHA: JULIO 1995	
PROYECTO: F. IZZO C.	REVISO: F. IZZO C.	APROBO: F. IZZO S.	DIBUJO: D. IZZO C.