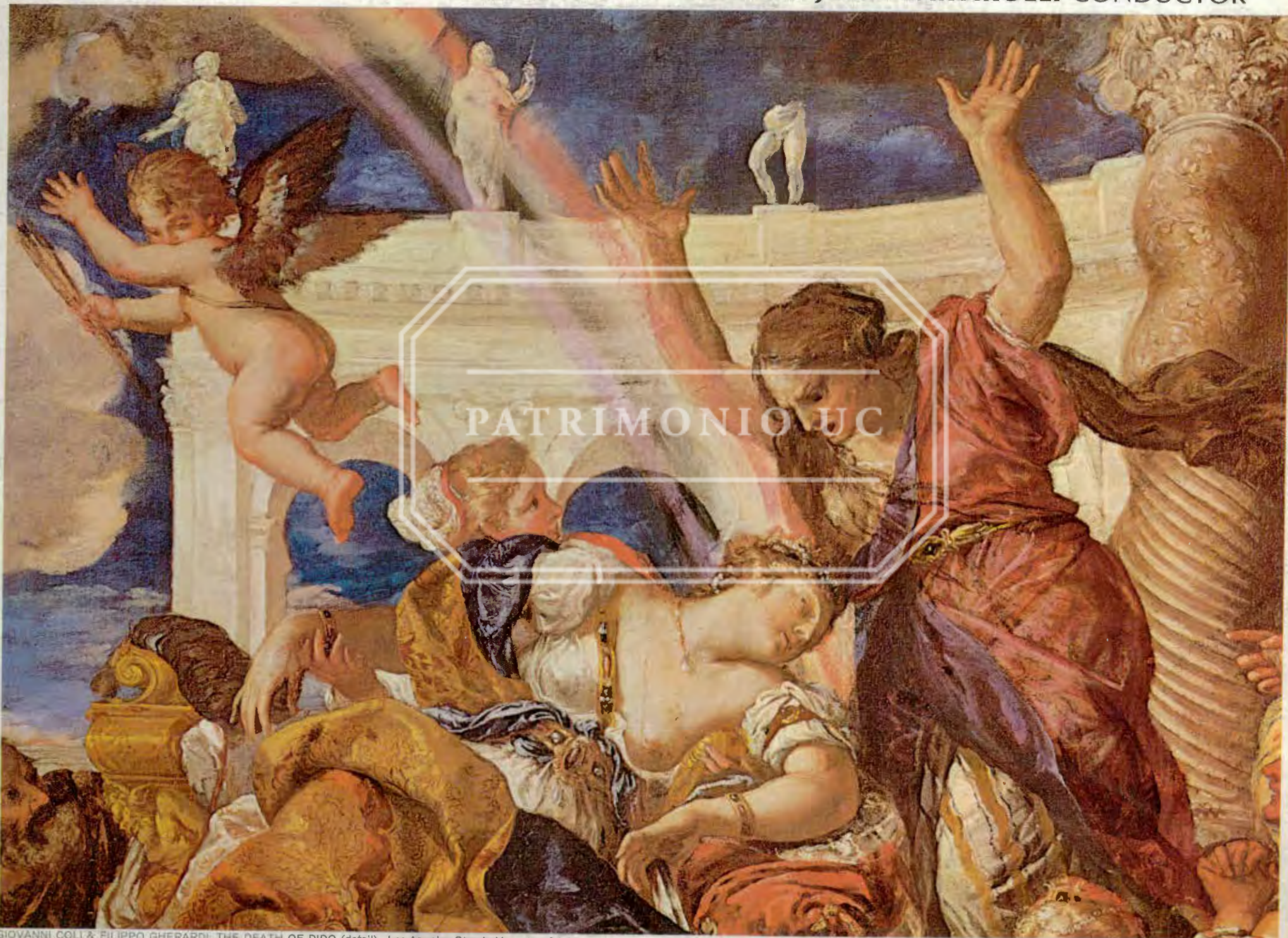




PURCELL **DIDO** & **AENEAS**

VICTORIA DE LOS ANGELES · HEATHER HARPER · PATRICIA JOHNSON · PETER GLOSSOP
ENGLISH CHAMBER ORCHESTRA · AMBROSIAN SINGERS · **SIR JOHN BARBIROLI** CONDUCTOR



GIOVANNI COLI & FILIPPO GHERARDI: THE DEATH OF DIDO (detail) · Los Angeles County Museum of Art.

STEREO
S 36359

PURCELL

(1659-1695)

DIDO AND AENEAS

CAST	
DIDO, QUEEN OF CARTHAGE.....	VICTORIA DE LOS ANGELES, <i>soprano</i>
AENEAS, A TROJAN PRINCE.....	PETER GLOSSOP, <i>baritone</i>
BELINDA, DIDO'S SISTER.....	HEATHER HARPER, <i>soprano</i>
SORCERESS.....	PATRICIA JOHNSON, <i>contralto</i>
SECOND WOMAN.....	ELIZABETH ROBSON, <i>soprano</i>
FIRST WITCH.....	CLARE WALMESLEY, <i>soprano</i>
SECOND WITCH.....	SYBIL MICHELOW, <i>mezzo-soprano</i>
SAILOR.....	ROBERT TEAR, <i>tenor</i>
SPIRIT.....	SYBIL MICHELOW, <i>mezzo-soprano</i>

BOOKLET ENCLOSED WITH NOTES,
LIBRETTO AND PHOTOGRAPHS

THE AMBROSIAN SINGERS (Chorus Master: John McCarthy)
THE ENGLISH CHAMBER ORCHESTRA (Leader: Emanuel Hurwitz)
Harpichord: RAYMOND LEPPARD (Harpichord by Thomas Goff)

Conductor:
SIR JOHN BARBIROLLI

PATRIMONIO UC

SIDE ONE [28' 43"]

BAND 1 [18' 35"] ACT I

- No. 1 Overture
Scene 1 — The Palace
- No. 2 Song (*Belinda and Chorus*)
"Shake the cloud from off your brow"
- No. 3 Song (*Dido*) "Ah! Belinda, I am prest"
- No. 4 Recit. (*Belinda, Dido*)
"Grief increases by concealing"
- No. 5 Chorus "When monarchs unite"
- No. 6 Recit. (*Dido, Belinda*)
"Whence could so much virtue spring"
- No. 7 Duet (*Belinda, Second Woman*) and Chorus
"Fear no danger to ensue"
- No. 8 Recit. (*Belinda, Aeneas, Dido*)
"See, your Royal guest appears"
- No. 9 Chorus "Cupid only throws the dart"
- No. 10 Recit. (*Aeneas*) "If not for mine, for Empire's sake"
- No. 11 Song (*Belinda*) "Pursue thy conquest, love"
- No. 12 Chorus "To the hills and the vales"
- No. 13 The Triumphant Dance (*Orchestra*)

BAND 2 [10' 08"]

- Scene 2 — The Cave
- No. 14 Prelude for the Witches (*Sorceress and First Witch*)
"Wayward sisters"
- No. 15 Chorus (*Witches*) "Harm's our delight"
- No. 16 Recit. (*Sorceress*) "The Queen of Carthage, whom we hate"
- No. 17 Chorus "He, ha, ho!"
- No. 18 Recit. (*First & Second Witches, Sorceress*)
"Ruin'd ere the set of sun"
- No. 19 Chorus "Ha, he, ho!"
- No. 20 Duet (*First & Second Witches*) "But, ere we this perform"
- No. 21 Echo Chorus "In our deep vaulted cell"
- No. 22 Echo Dance of the Furies (*Orchestra*)

SIDE TWO [29' 28"]

BAND 1 [9' 12"] ACT II

- Scene — The Grove
- No. 23 Ritornelle (*Orchestra*)
- No. 24 Song (*Belinda and Chorus*)
"Thanks to these lonesome vales"
- No. 25 Song (*Second Woman*) "Oft she visits this lov'd mountain"

- No. 26 Recit. (*Aeneas, Dido*) "Behold, upon my bending spear"
- No. 27 Song (*Belinda and Chorus*) "Haste, haste to town"
- No. 28 Recit. (*Spirit, Aeneas*) "Stay, Prince! and hear great Jove's command"

BAND 2 [20' 16"] ACT III

- Scene — The Ships
- No. 29 Prelude
Song (*Sailor and Chorus*) "Come away, fellow sailors"
- No. 30 Sailors' Dance (*Orchestra*)
- No. 31 Recit. (*Sorceress, First Witch, Second Witch*)
"See, the flags and streamers curling"
- No. 32 Song (*Sorceress*) "Our next motion"
- No. 33 Chorus "Destruction's our delight"
- No. 34 Witches' Dance (*Orchestra*)
- No. 35 Recit. (*Dido, Belinda, Aeneas*)
"Your counsel all is urg'd in vain"
- No. 36 Chorus "Great minds against themselves conspire"
- No. 37 Recit. (*Dido*) "Thy hand, Belinda"
- No. 38 Song (*Dido*) "When I am laid in earth"
- No. 39 Chorus "With drooping wings"

Library of Congress Catalog Card Numbers R 66-2750 (mono) and R 66-2751 (stereo) apply to this record.

THIS RECORDING SHOULD BE PLAYED ONLY WITH A STEREO CARTRIDGE & STYLUS

MANUFACTURED BY CAPITOL RECORDS, INC., HOLLYWOOD AND VINE STREETS, HOLLYWOOD, CALIF. • FACTORIES, BRANTON, PA., LOS ANGELES, CALIF., JACKSONVILLE, ILL.