

MIGUEL AGUILAR

HOMENAJE A

SAMUEL BECKETT

1994

SOPRANO SOLISTA

CLARINETE EN Si b ; 2 CLARINETES BAJOS EN Si b  
(2 EJECUTANTES EN TOTAL)

TROMPETA, Corno EN FA, TROMBÓN TENOR  
VIOLINES, VIOLAS, VIOLONCHELOS Y CONTRABAJOS

ARPA

XILOFONO, CELESTA Y VIBRAFONO

TRIÁNGULO , PLATILLO SUSPENDIDO GRANDE,  
TAMBOR MILITAR , FUSTA,  
WOOD BLOCK , GONG GRANDE, TAM TAM PROFUNDO.

TIMBAL.

HOMENAJE A S. BECKET.

cl.                      tubn                      SOPRANO                      trpt

*p*                      *f*                      *mf*

Cor.                      [5]                      Ve.                      Va. *p.zz*

*ff*                      *mf*                      *pp*

Cl.                      Vn.

*f*

[10]                      *ff*                      *p*                      *pp*                      *f*

NO SYM-BOLS, NO, NO SYM-BOLS WHERE

[15]                      NONE                      *p* IN-TEN-DED                      TACET

NONE *p* IN-TEN-DED TACET



(♩ = 64) 5

Handwritten musical score for a symphony orchestra. The score is written on seven staves, each with a different instrument label on the left:

- Cl. Sib.** (Clarinete en Si bemol): Staff 1. Shows a melodic line starting in the third measure with a dynamic marking of *f*.
- Tupt.** (Trompa): Staff 2. Shows a melodic line starting in the first measure with a dynamic marking of *mf*.
- Cor. mFa** (Corno en Fa menor): Staff 3. Shows a melodic line starting in the second measure with a dynamic marking of *ff*.
- Arpa** (Arpa): Staff 4. Shows a rhythmic accompaniment with dynamic markings of *f* and *mf*.
- Vibr.** (Vibrafón): Staff 5. Shows a rhythmic accompaniment with dynamic markings of *f* and *mf*.
- Violines** (Violines): Staff 6. Shows a melodic line starting in the first measure with a dynamic marking of *p*.
- Vcs.** (Violonchelos): Staff 7. Shows a rhythmic accompaniment with dynamic markings of *mf*.

The score includes various musical notations such as notes, rests, slurs, and dynamic markings. There are also tempo markings:  $(♩ = 64)$  and a boxed number 5. The key signature changes from one flat to one sharp between the second and third measures. The time signature is 3/4.

Three sets of empty musical staves, each consisting of five lines, provided for additional notation or rehearsal.

- 3 - HOMENAJE A S. BECKET  
ABULLAR

Handwritten musical score for a symphony orchestra, page 3 of "Homenaje a S. Becket" by Abullar. The score includes parts for Trumpet, Cor-en Fa, Tromba, Arpa, Vibra, Vo., Vas., Vcs., and Cbs. It features various musical notations such as dynamics (mf, pp, ff), articulation (accents, slurs), and performance instructions (pizz, p). The tempo is marked as quarter note = 64. A large watermark "PATRIMONIO" is visible in the background.

**Trumpet:** (♩. = 64) *mf*

**Cor-en Fa:** (♩. = 64) *pp*

**Tromba:** (♩. = 64) *p*

**Arpa:** *ff* (ff)

**Vibra:** (mf) *ff* (♩. = 64)

**Vo.:** *ff*

**Vas.:** *pizz* *pp*

**Vcs.:**

**Cbs.:** *p*

10 -4- HOMENAJE A S. BECKET  
LENTISSIMO AQUILAR

(♩=64)

SOPRANO

VIBR.

VIOLINES

ff NO SYM-BOLS, P NO, NO

15

SOPRANO

CELESTA

pp SYM-BOLS f WHERE NONE P IN-TEN-DED

muf

♩=80

XILOFONO

CELESTA

ARPA

VIBR.

Vn.

mf f P PP

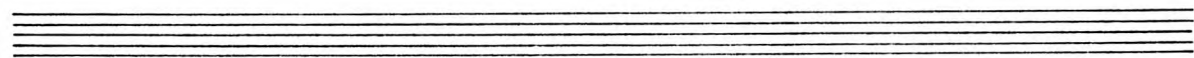
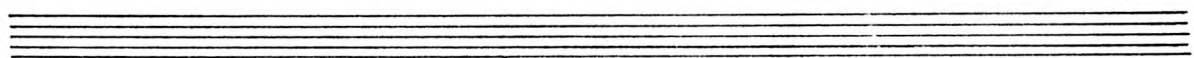
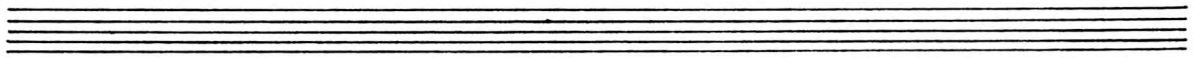
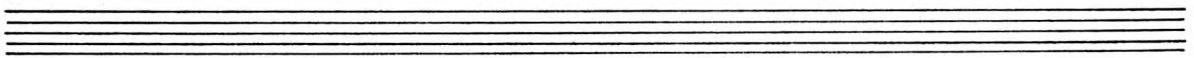
20 ♩. = 72

-5- HOMENAJE A S. BECKET  
AQUILAR

Musical score for percussion instruments:

- XILOFONO:** Treble clef, 6/16 time signature. Dynamics: ppp, pp.
- CELESTA:** Treble clef, 6/16 time signature. Dynamics: pp, ppp.
- VIOLIN:** Treble clef, 2/4 time signature. Dynamics: ppp, pp, ppp.
- PLATILLO SUSPENDIDO:** Treble clef, 2/4 time signature. Dynamics: mf.
- TAMBOR MILITAR:** Treble clef, 2/4 time signature. Dynamics: f, mf.
- WOOD BLOCK:** Treble clef, 2/4 time signature. Dynamics: pp, f.

Additional markings include accents (>), slurs, and triplet markings (3) over notes.







HOMENAJE A S. BECKET  
AGULLAR

-7-  
♩ = 40.

30

XILOF.

VIBR.

CLARINETE BAJO I Sib

CLARINETE BAJO II Sib

Tromb

CONTRA BAJOS

PLATILLO SUSPENDIDO

WOOD BLOCK





40

- 10 - HOMENAJE A S. BECKET  
AGUILAR  
♩ = 56

ARPA

Handwritten musical notation for Arpa (Harp) in 2/4 time. The staff shows a whole rest in the first measure, followed by a quarter note G4 in the second measure, and a quarter note A4 in the third measure. Dynamics include *ff*.

VLR.

Handwritten musical notation for VLR. (Violin) in 2/4 time. The staff shows a whole rest in the first measure, followed by a quarter note G4 in the second measure, and a quarter note A4 in the third measure. Dynamics include *ff*.

Cl. Bajo I  
F<sup>b</sup>

Handwritten musical notation for Cl. Bajo I (Clarinet Bass) in 2/4 time. The staff shows a whole rest in the first measure, followed by a quarter note G3 in the second measure, and a quarter note A3 in the third measure. Dynamics include *fff*.

TRBN.

Handwritten musical notation for TRBN. (Trumpet) in 2/4 time. The staff shows a whole rest in the first measure, followed by a quarter note G4 in the second measure, and a quarter note A4 in the third measure. Dynamics include *ff*.

Va.

Handwritten musical notation for Va. (Violin) in 2/4 time. The staff shows a whole rest in the first measure, followed by a quarter note G4 in the second measure, and a quarter note A4 in the third measure. Dynamics include *mf*.

Cb.

Handwritten musical notation for Cb. (Cello) in 2/4 time. The staff shows a whole rest in the first measure, followed by a quarter note G2 in the second measure, and a quarter note A2 in the third measure. Dynamics include *mf* and *pizz*.

TIM-BAL

Handwritten musical notation for TIM-BAL (Timpani) in 2/4 time. The staff shows a whole rest in the first measure, followed by a quarter note G2 in the second measure, and a quarter note A2 in the third measure. Dynamics include *mf*.

P. SUP.

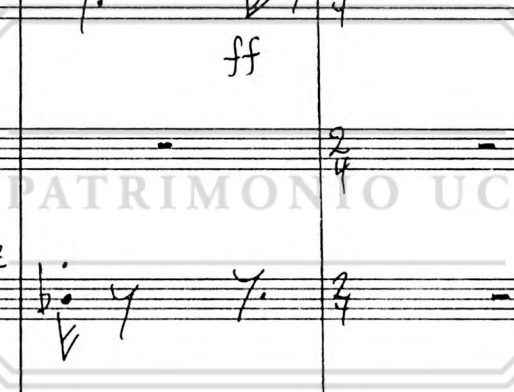
Handwritten musical notation for P. SUP. (Percussion) in 2/4 time. The staff shows a whole rest in the first measure, followed by a quarter note G4 in the second measure, and a quarter note A4 in the third measure. Dynamics include *ppp*.

T. MILIT. BORG.

Handwritten musical notation for T. MILIT. BORG. (Tambourin) in 2/4 time. The staff shows a whole rest in the first measure, followed by a quarter note G4 in the second measure, and a quarter note A4 in the third measure. Dynamics include *ppp*.

W. BLOCK TAMTAM

Handwritten musical notation for W. BLOCK TAMTAM (Wood Block) in 2/4 time. The staff shows a whole rest in the first measure, followed by a quarter note G4 in the second measure, and a quarter note A4 in the third measure. Dynamics include *ppp*.



2.4.94