

Nota para el Jueves :

Entos acordes pueden "tonalizarse" todos siguiendo ~~los~~ el grupo de las "Regiones" de Schönberg. Se trata de las 3 primeras notas de cada acorde. La cuarta nota puede considerarse como "agregado armónico" (considerando que la séptima ^{menor} está en los primeros armónicos naturales. La Séptima Mayor no lo está pero sigue la misma ley de "substitutos" o "transformaciones". alteraciones

Copiar todo los casos de :

A₁

A₂

A₃

B₁

B₂

B₃

C₁

C₂

C₃

d₁

d₂

d₃

PATRIMONIO UC

buscar para el Miércoles 23

Acordes:

Creo de que es mejor buscar otra repartición de los 36 acordes diferentes, por ejemplo:

$$\text{grupos de 6 acordes} = 6 \times 6 = 36$$

PATRIMONIO UC

MÁS PRÁCTICOS:

$$\text{grupos de 4 acordes} = \cancel{4} \times \cancel{3} = 12 \times 3 = 36$$

$$\text{grupos de 3 acordes} = 3 \times \cancel{4} = 12 \times 3 = 36$$

$$\underline{0} \quad 3 \times 2 = 6, \times 2 = 12, \times 3 = 36$$

~~3 acordes de cada una~~

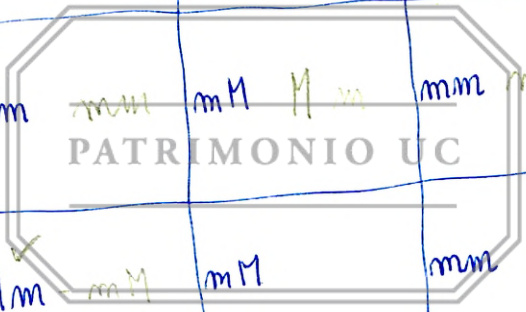
(Aquí figura 4 veces cada combinación) = 16 ac

1ª	MM	Mm	mm - MM	mM - mm	Mm - mM
3ª	Mm mM	MM - Mm	mm - MM	mM - mm	
5ª	mM - mm	Mm - mM	MM - Mm	mm - MM	
7ª	mm - MM	mM - mm	Mm - mM	MM - Mm	

1ª	MM mM	Mm	MM	mM mMm	mm mM
3ª	✓ MM-MM	Mm	mm	mM Mm	mm mM
5ª	MM mm	Mm	✓ mM	mM	mm
7ª	✓ MM-Mm	Mm	Mm	mM	mm

pos 1ª :

alta prioridad de seleccion 1ª acuerdo :
 Ap



1

(Enlace = 3 M)

(14) acordes

2 notas comunes (mi4-si4)

6 sonidos diferentes

a

base

= +

(7n-n) (7nM)

b

3M

3m

3M

7M

7M

3m

5J

2m

3M

3m

5J

3M

M m M m m M A A

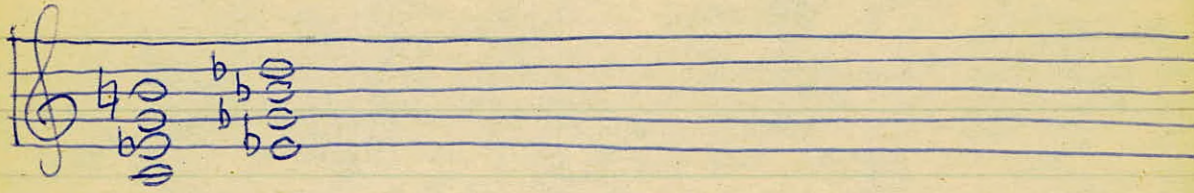
12 acordes

2

Enlace = 3 m

Nota común = 1 (mi b)

7 Sonidos diferentes



FmM Fm m



(Enlace = 7M)

12 acordes (3) (Acorde Sacre:

(*) 7 Mayor agregada, no en original,
pero en el acorde 2º como mi^b)

A musical staff in treble clef showing a chord progression. The first chord is marked with an asterisk (*) and contains notes F, C, G, and C. The second chord contains notes G, D, A, and D. The third chord contains notes A, E, B, and E. The fourth chord contains notes B, F, C, and F. The fifth chord contains notes C, G, D, and G. The sixth chord contains notes D, A, E, and A. The seventh chord contains notes E, B, F, and B. The eighth chord contains notes F, C, G, and C. The ninth chord contains notes G, D, A, and D. The tenth chord contains notes A, E, B, and E. The eleventh chord contains notes B, F, C, and F. The twelfth chord contains notes C, G, D, and G. The notes are connected by a curved line with an arrow pointing to the right, indicating a sequence of chords. The notes are written as whole notes.

7nn 7nm

Tono común = 1

7 sonidos diferentes

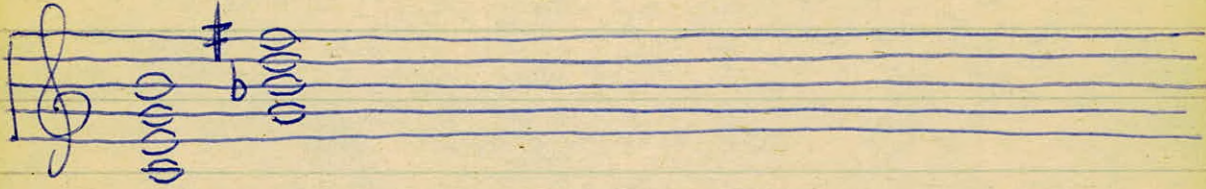
A musical staff in treble clef showing a sequence of chords. The first chord is marked with an asterisk (*) and contains notes F, C, G, and C. The second chord contains notes G, D, A, and D. The third chord contains notes A, E, B, and E. The fourth chord contains notes B, F, C, and F. The fifth chord contains notes C, G, D, and G. The sixth chord contains notes D, A, E, and A. The seventh chord contains notes E, B, F, and B. The eighth chord contains notes F, C, G, and C. The ninth chord contains notes G, D, A, and D. The tenth chord contains notes A, E, B, and E. The eleventh chord contains notes B, F, C, and F. The twelfth chord contains notes C, G, D, and G. The notes are connected by a curved line with an arrow pointing to the right, indicating a sequence of chords. The notes are written as whole notes. The text "PATRIMONIO" is visible in the background.

"disposición Sacre"

A musical staff in treble clef showing a sequence of chords. The first chord is marked with an asterisk (*) and contains notes F, C, G, and C. The second chord contains notes G, D, A, and D. The third chord contains notes A, E, B, and E. The fourth chord contains notes B, F, C, and F. The fifth chord contains notes C, G, D, and G. The sixth chord contains notes D, A, E, and A. The seventh chord contains notes E, B, F, and B. The eighth chord contains notes F, C, G, and C. The ninth chord contains notes G, D, A, and D. The tenth chord contains notes A, E, B, and E. The eleventh chord contains notes B, F, C, and F. The twelfth chord contains notes C, G, D, and G. The notes are connected by a curved line with an arrow pointing to the right, indicating a sequence of chords. The notes are written as whole notes. Below the staff, there are interval markings: "3m" above the first three chords, "2m" above the next three chords, and "3m" below the last three chords.

? (Inlace = 5j)

12 acordes (4)



FMM FmM



✓ Enlace = 5j.

12 Acordes (5) • 2 notas comunes

(acorde Berg Come re)

A m m m 7 M m 7 m M

En Berg

Se comporta como un ac de 13 (m-m-n-m)
puede ser útil como tal para susinientos

PATRIMONIO UC

NO

~~(7M-M) (7m-m)~~

5 sonidos comunes

PATRIMONIO UC

Sonidos nuevos

no repiten.

Combinaciones

- (1) 7Mm - 7mm
- (2) 7Mm - 7mm
- (3) 7mm - 7mm
- (4) 7Mm - 7Mm
- (5) 7mm - 7mm
- (6) 7Mm - 7mm
- (7) 7mm - 7mm

criticas!

② (Enlace = 3 m)

(12) Acordes

no!

no hay "nota comun"!

8 notas diferentes

2 grupos simetricos

base

(7M) (7m m)

(zona cheque "total")

+? ?(*)

ac m + b Ag / m + b ag

(*) si se agrega un traspunte se obtienen los 12 tonos cromaticos

ac7M

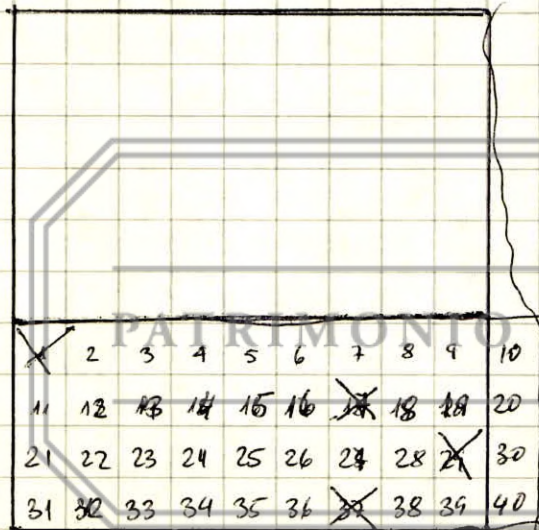
7M

ac7M

superpuntos ac 15

4 series de 3 acordes

	I	II	III
x	2	3	4
a	5	6	7
	8	9	10
	11	12	13
b	14	15	16
x	18	19	20
	21	22	23
c	24	25	26
	27	28	30
	31	32	33
d	34	35	36
x	38	39	40



= 12 segmentos de 3 acordes

- a1 a2 a3
- b1 b2 b3
- c1 c2 c3
- d1 d2 d3

