

Brabus #1-1

spantes Brabus Sing #1  
1st Movement  
(pases, mativos etc)

spantes Sebe Brabus: Sing #1

Handwritten musical score for the first system, consisting of three staves. The top staff has a treble clef and a key signature of two flats. The middle and bottom staves have bass clefs. The music features various note values, including quarter and eighth notes, and rests. There are some markings above the notes, possibly indicating dynamics or articulation.

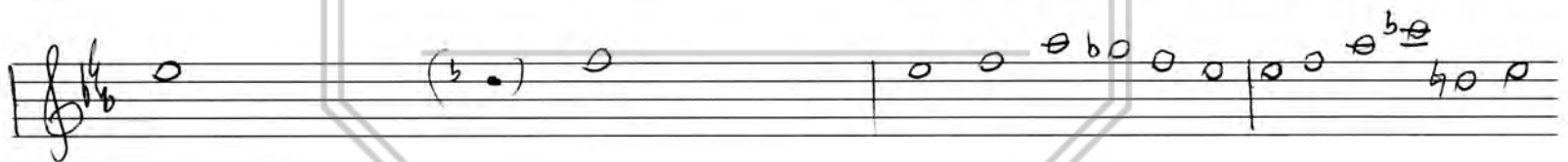
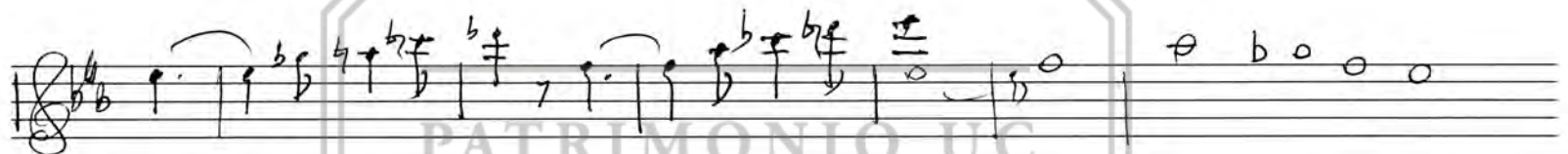
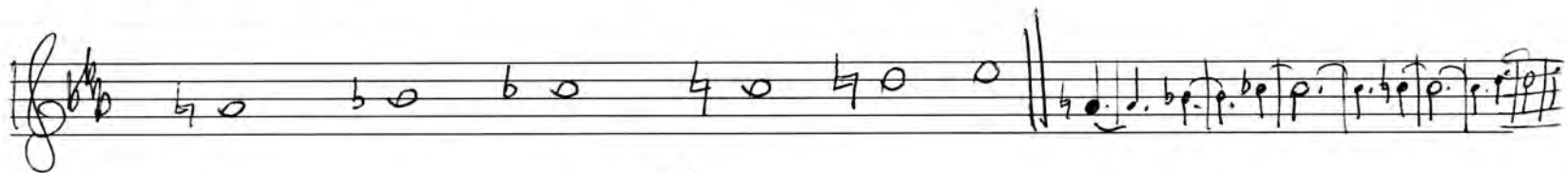
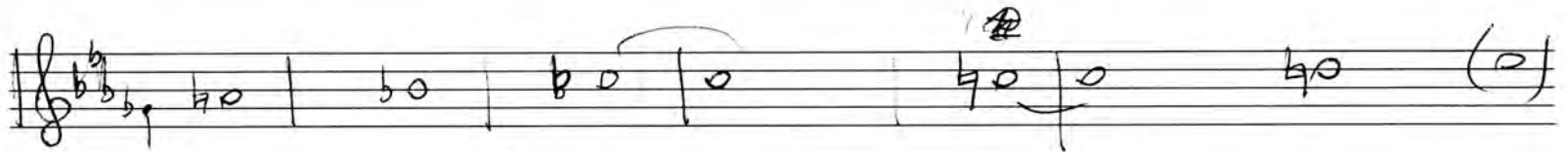
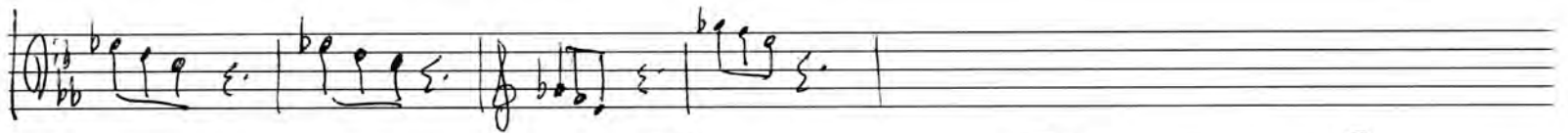
Handwritten musical score for the second system, consisting of four staves. The top staff has a treble clef and a key signature of two flats. The second and third staves have bass clefs. The bottom staff has a bass clef and a key signature of two flats. The music features various note values, including quarter and eighth notes, and rests. There are some markings above the notes, possibly indicating dynamics or articulation.

Handwritten musical score for the third system, consisting of two staves. The top staff has a treble clef and a key signature of two flats. The bottom staff has a bass clef and a key signature of two flats. The music features various note values, including quarter and eighth notes, and rests. There are some markings above the notes, possibly indicating dynamics or articulation.

Handwritten musical score for the fourth system, consisting of two staves. The top staff has a treble clef and a key signature of two flats. The bottom staff has a bass clef and a key signature of two flats. The music features various note values, including quarter and eighth notes, and rests. There are some markings above the notes, possibly indicating dynamics or articulation.



este tipo de figuración (melódica) combinando constantemente de métrica en cuartetos de brujos. Hay que estar con  
 cuidado de indicación de medida. Norma propia métrica de brujos!





# Desanallu

5 + 2 + (2)

1

Si b  
m.c.m

Handwritten musical notation for the first system, including a treble clef staff with a melodic line and a bass clef staff with a bass line. The key signature is one flat (B-flat). The time signature is 3/4. The first measure is marked with a circled '1'. The second measure is marked with a '2'. The third measure is marked with a '3'. The fourth measure is marked with a '4'. The fifth measure is marked with a '5'. The sixth measure is marked with a '1'. The seventh measure is marked with a '2'.

Handwritten musical notation for the second system, including a treble clef staff with a melodic line and a bass clef staff with a bass line. The key signature is one flat (B-flat). The time signature is 3/4. The first measure is marked with a '1'. The second measure is marked with a '2'. The third measure is marked with a '3'. The fourth measure is marked with a '4'. The fifth measure is marked with a '5'. The sixth measure is marked with a '1'. The seventh measure is marked with a '2'.

(Caron figura ritmica)

Handwritten musical notation for the third system, including a treble clef staff with a melodic line and a bass clef staff with a bass line. The key signature is one flat (B-flat). The time signature is 3/4. The first measure is marked with a '1'. The second measure is marked with a '2'. The third measure is marked with a '3'. The fourth measure is marked with a '4'. The fifth measure is marked with a '5'. The sixth measure is marked with a '1'. The seventh measure is marked with a '2'.

pedal

7 compasso Si Major

Handwritten musical notation for the fourth system, including a treble clef staff with a melodic line and a bass clef staff with a bass line. The key signature is one flat (B-flat). The time signature is 3/4. The first measure is marked with a '3'. The second measure is marked with a '4'.

PATRIMONIO UC

Handwritten musical notation for the fifth system, including a treble clef staff with a melodic line and a bass clef staff with a bass line. The key signature is one flat (B-flat). The time signature is 3/4. The first measure is marked with a '1 sop'. The second measure is marked with a '2'. The third measure is marked with a '3'. The fourth measure is marked with a '4'. The fifth measure is marked with a '5'. The sixth measure is marked with a '1'. The seventh measure is marked with a '2'.

Handwritten musical notation for the sixth system, including a treble clef staff with a melodic line and a bass clef staff with a bass line. The key signature is one flat (B-flat). The time signature is 3/4. The first measure is marked with a 'fa#'. The second measure is marked with a 'sol'. The third measure is marked with a '4'. The fourth measure is marked with a '5'. The fifth measure is marked with a '1'. The sixth measure is marked with a '2'. The seventh measure is marked with a '3'.

abreviada

la cadencia

Handwritten musical notation for the seventh system, including a treble clef staff with a melodic line and a bass clef staff with a bass line. The key signature is one flat (B-flat). The time signature is 3/4. The first measure is marked with a '1'. The second measure is marked with a '2'. The third measure is marked with a '3'. The fourth measure is marked with a '4'. The fifth measure is marked with a '5'. The sixth measure is marked with a '1'. The seventh measure is marked with a '2'.

Si b

Handwritten musical notation for the eighth system, including a treble clef staff with a melodic line and a bass clef staff with a bass line. The key signature is one flat (B-flat). The time signature is 3/4. The first measure is marked with a '1'. The second measure is marked with a '2'. The third measure is marked with a '3'. The fourth measure is marked with a '4'. The fifth measure is marked with a '5'. The sixth measure is marked with a '1'. The seventh measure is marked with a '2'.





1ª 8ª alta (p. dolce)

2ª loco (p. p)

b)

Handwritten musical notation for section b), consisting of two staves. The top staff is in treble clef with a key signature of two flats (Bb, Eb) and a common time signature. It features a melodic line with slurs and a 'pedal solo' marking. The bottom staff is in the same clef and key signature, showing a bass line with chords and a 'pedal solo' marking.

c)

m.c.m.  
p.e. o

Handwritten musical notation for section c), consisting of six staves. The top two staves are in treble clef with a key signature of two flats. The third staff is in bass clef with a key signature of two flats and contains chords marked with '(x 2)'. The fourth staff is in treble clef with a key signature of two flats. The fifth staff is in bass clef with a key signature of two flats and contains a melodic line with slurs. The sixth staff is in bass clef with a key signature of two flats and contains a bass line with chords. The notation includes various dynamics like 'p', 'f', and 'p.p.', and includes a large watermark 'PATRIMONIO UC' in the center.

cadencia

V

4

Handwritten musical notation for the first system. It consists of two staves. The upper staff is in treble clef with a key signature of two flats (B-flat and E-flat). It contains a melodic line with various ornaments, including grace notes and slurs. The lower staff is in bass clef and contains a bass line of whole notes. A circled number '4' is written in the left margin.

mem  
sol o

Handwritten musical notation for the second system. It consists of a single treble staff with a key signature of two flats. The notation includes a melodic line with slurs and ornaments. Below the staff, the numbers '1' and '2' are circled, likely indicating specific measures or phrases.

mem  
Re o

Handwritten musical notation for the third system. It consists of a single treble staff with a key signature of two flats. The notation includes a melodic line with slurs and ornaments. Below the staff, the numbers '1', '2', and '3' are circled, likely indicating specific measures or phrases.

Propositi ; -



# Reexposición

el comienzo de la reexp. es igual a la exposición con variaciones de ornamentación. luego corte y continúa poco a poco con transposición.

mus  
+8<sup>a</sup>  
cambio!

en adelante sigue igual después del salto y Transposición. en la exp:

(sigue igual transpuesto)  
(termina reexp & sigue como el comienzo del desarrollo)

(3 veces)  
cresc

+8<sup>a</sup>  
meno allegro  
CADA

Coda

Meno  
Allegro

Handwritten musical notation for the first system. The top staff is in treble clef with a key signature of two flats (Bb, Eb). It contains a melodic line with notes and rests, including dynamic markings *ob* and *sf*. The bottom staff is in bass clef with a key signature of two flats, containing a bass line with notes and rests, and the instruction *(cont + p ped) etc*.

Handwritten musical notation for the second system. The top staff continues the melodic line with notes and rests, including dynamic markings *f* and *sf*. The bottom staff continues the bass line with notes and rests, including dynamic markings *f* and *sf*. A large watermark "PATRIMONIO UC" is visible in the background.

Handwritten musical notation for the third system. The top staff is in treble clef with a key signature of two flats, containing a melodic line with notes and rests, including dynamic markings *p* and *pizz*. The bottom staff is in bass clef with a key signature of two flats, containing a bass line with notes and rests, including dynamic markings *p* and *pizz*. A large watermark "PATRIMONIO UC" is visible in the background.



# 1<sup>er</sup> Mov. Introducción:

Handwritten musical score for the first movement introduction. The score is written on two staves, piano (top) and bass (bottom). The piano staff begins with a treble clef and a key signature of two flats (B-flat and E-flat). The bass staff begins with a bass clef and the same key signature. The time signature is 6/8. The piano staff contains several measures of music, including a half note followed by a quarter note, and a half note followed by a quarter note. The bass staff contains several measures of music, including a half note followed by a quarter note, and a half note followed by a quarter note. There are red annotations: a downward arrow on the piano staff, an upward arrow on the bass staff, and the word "ped" with a symbol below the bass staff. A large watermark "PATRIMONIO UC" is visible in the center of the page.

Handwritten musical score for the first movement introduction, featuring violin, viola, and woodwind staves. The violin and viola staves are written on a grand staff with a treble clef and a key signature of two flats. The woodwind staves are written on a grand staff with a bass clef and a key signature of two flats. The woodwind staves include annotations for "ob" (oboe), "copra aquí" (copy here), "celi" (cello), and "mss" (messa). There are red annotations: "COR" above the woodwind staff, "med" above the woodwind staff, and "ob" below the woodwind staff. A large watermark "PATRIMONIO UC" is visible in the center of the page.

Empty musical staves for the first movement introduction, consisting of two grand staves (violin/viola and woodwind/cello/bass).

Bialus #1 p. 4 Allegro

Handwritten musical notation on a five-line staff. The key signature has two flats (Bb, Eb) and the time signature is 4/4. The notation includes quarter notes, half notes, and a whole note, with some scribbled-out corrections. A double bar line is present.

Handwritten musical notation on a five-line staff, continuing from the previous system. It features quarter notes, half notes, and a whole note, with some corrections and a double bar line.

