

I PAVANE.

Handwritten musical notation for I PAVANE. It features two staves. The first staff has a bracket of 8 notes, divided into two groups of 4 notes each, with a fermata over the second group. The notes are labeled 'pp fct 2' and 'fct 1°'. The second staff has a bracket of 4 notes, followed by a double-headed arrow, and then another bracket of 8 notes divided into two groups of 4 notes, with a fermata over the second group. The notes are labeled 'p fct', 'vl 1°', and 'd 2°'.

II Petit Poucet

(a) Handwritten musical notation for Petit Poucet (a). It shows a sequence of notes: 2/4, 3/4, 4/4, 5/4, and 'ob'. The notes are labeled 'cuend'.

(b) Handwritten musical notation for Petit Poucet (b). It shows a sequence of notes: 3/4, 2/4, 4/4, 3/4, 2/4, 4/4. The notes are labeled 'PATRIMONIO UC'.

(c) Handwritten musical notation for Petit Poucet (c). It shows a sequence of notes: 2/4, 4/4, pizz, pizz, 3/4, 2/4, 4/4, 2/4, 3/4, 4/4, 2/4, 3/4, 4/4. The notes are labeled 'CJ', 'pizz', 'iden'.

(d) Handwritten musical notation for Petit Poucet (d). It shows a sequence of notes: 2/4, 4/4, cuend cresc, 2/4, 3/4, 2/4, 4/4. The notes are labeled 'Tps', 'f espans.'.

(c) Handwritten musical notation for Petit Poucet (c). It shows a sequence of notes: 2/4, 4/4, pizz, pizz, 3/4, 2/4, 4/4, 2/4, 3/4, 4/4. The notes are labeled 'CJ', 'pizz', 'iden', '+ pajanos fg'.

(d') Handwritten musical notation for Petit Poucet (d'). It shows a sequence of notes: 2/4, 4/4, cuend cresc, pizz, ullo, 3/4, 2/4, 4/4. The notes are labeled '(b)', 'pizz', 'ullo'.

(f) Handwritten musical notation for Petit Poucet (f). It shows a sequence of notes: 4/4, 4/4, 4/4, 4/4, 4/4. The notes are labeled 'fct culomina'.

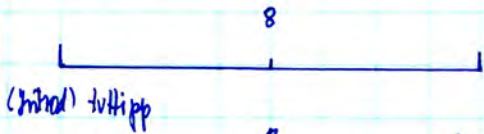
(a) Handwritten musical notation for Petit Poucet (a). It shows a sequence of notes: 2/4, 3/4, 4/4, 5/4, 4/4, 2/4. The notes are labeled 'ob'.

Sintesis:

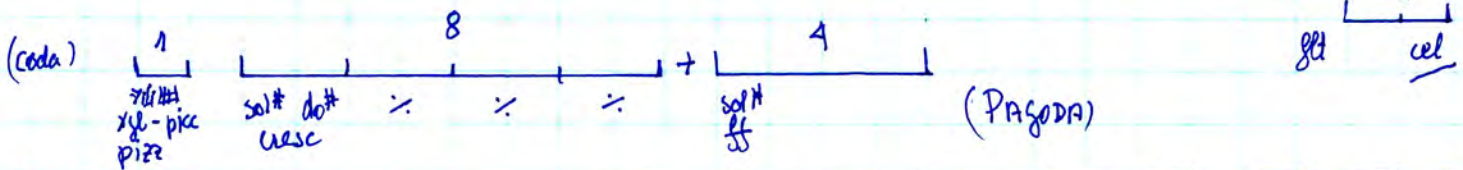
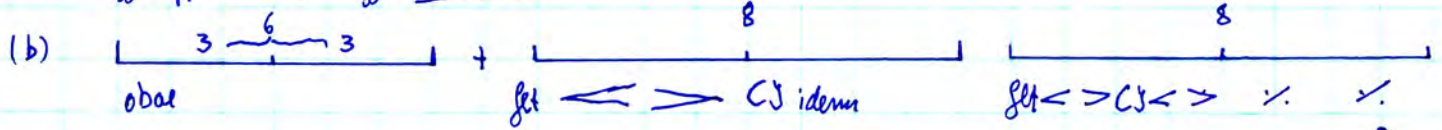
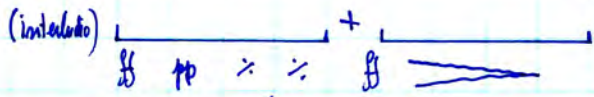
Handwritten diagram showing a vertical axis with labels 'a', 'b', 'c', 'd' from top to bottom. An arrow points downwards from 'a' to 'd'. To the right, there is a vertical axis with labels 'a', 'b + f', 'd', 'c' from top to bottom. An arrow points upwards from 'd' to 'a'.

III Laideronnette

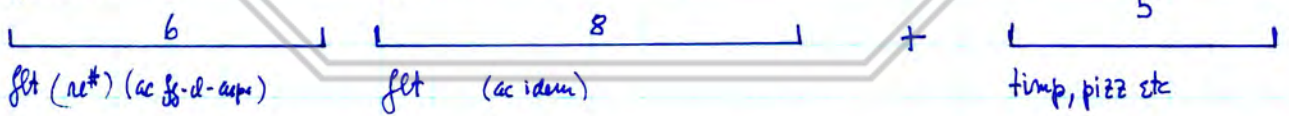
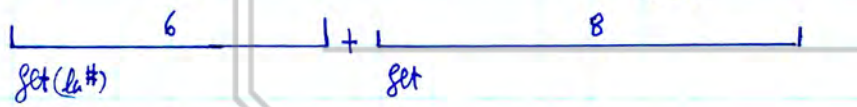
A



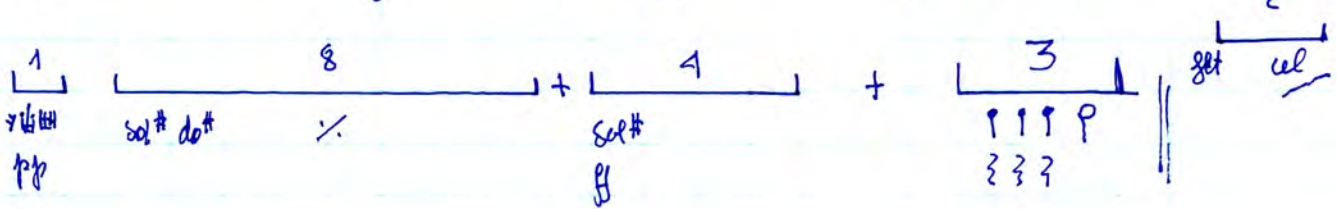
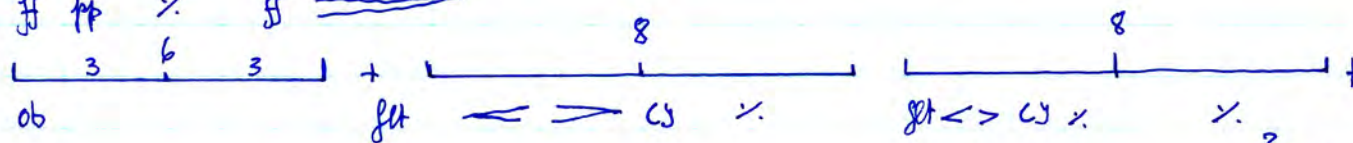
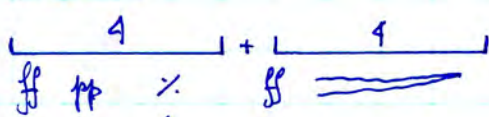
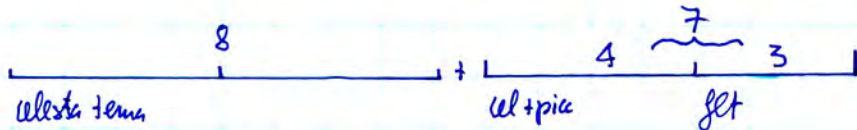
(brnd) tutti pp



B

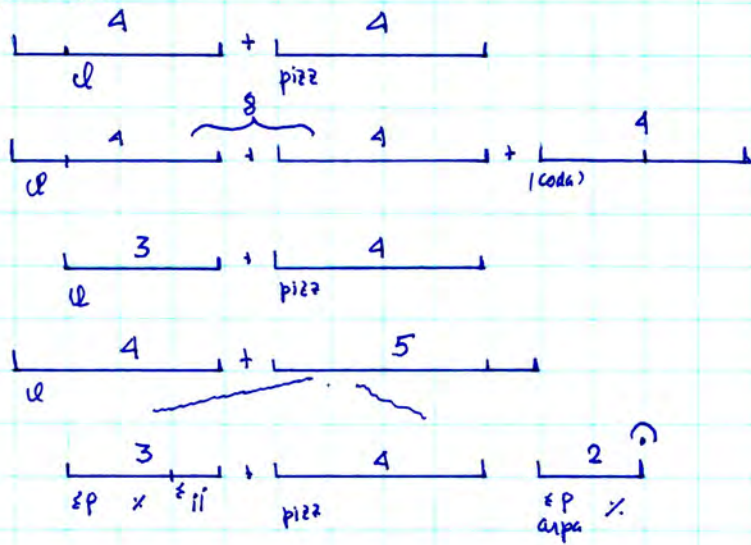


A'

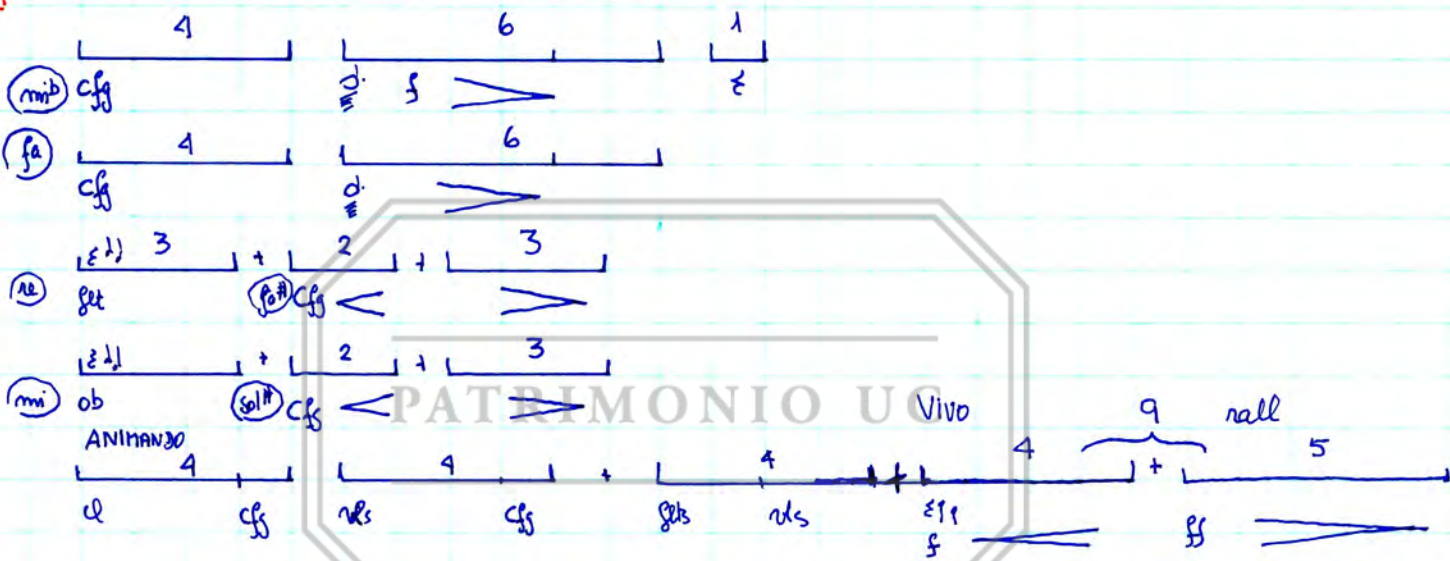


IV mar:

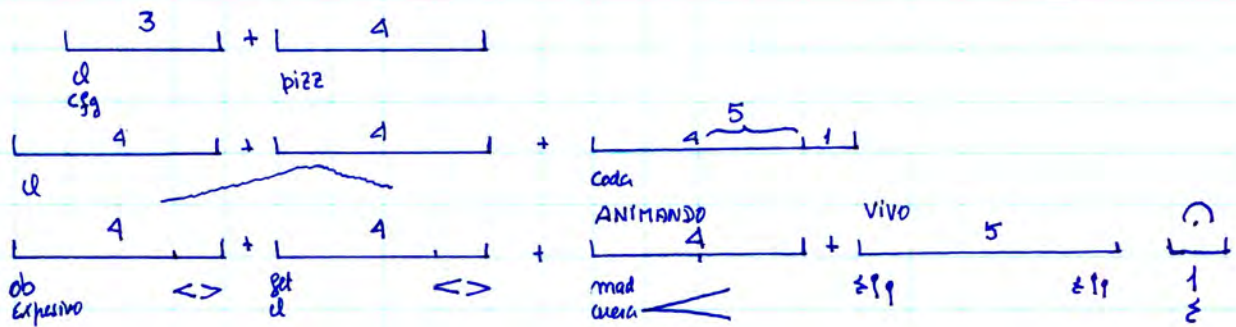
A



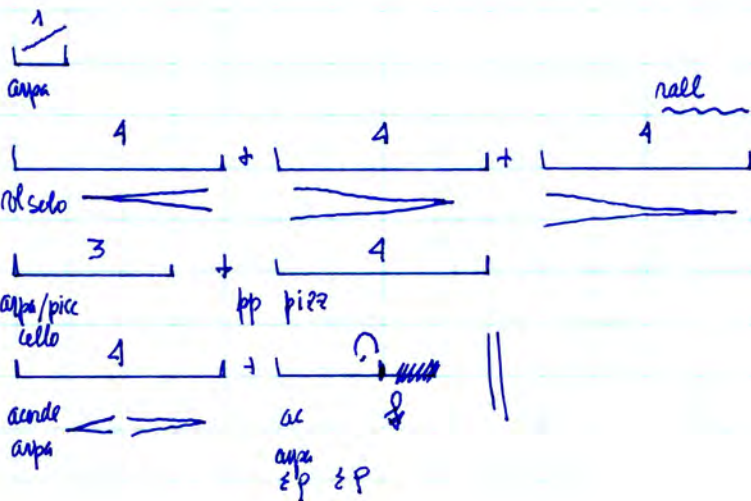
B



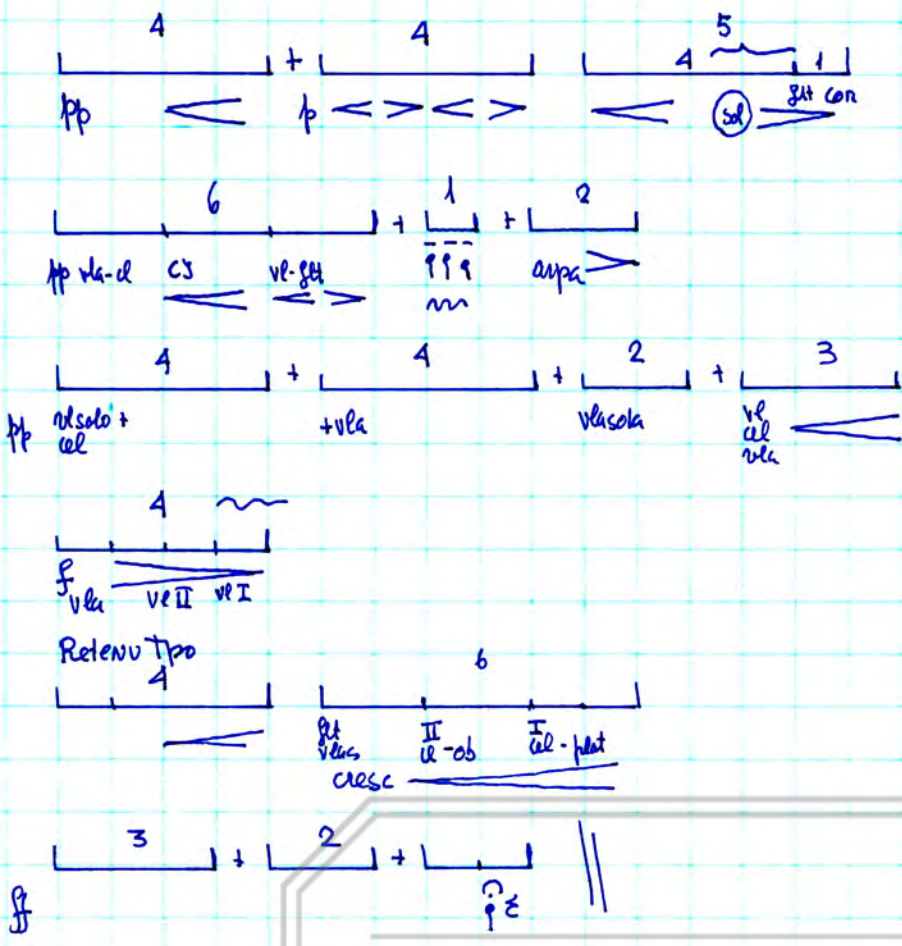
A'



Code



V Mov.





III Laideronnette

**A**

(intro) tollipp

(a)  $\overbrace{\hspace{8em}}^8$  +  $\overbrace{\hspace{4em}}^4$   $\overbrace{\hspace{3em}}^7$   $\overbrace{\hspace{3em}}^3$   
 picolo tema pic get

(intalato)

(b)  $\overbrace{\hspace{3em}}^3$   $\overbrace{\hspace{6em}}^6$   $\overbrace{\hspace{3em}}^3$  +  $\overbrace{\hspace{8em}}^8$   $\overbrace{\hspace{8em}}^8$   
 obae get <=> C3 idem get <=> C3 <=> ∴ ∴

(ceda)

$\overbrace{\hspace{1em}}^1$   $\overbrace{\hspace{8em}}^8$  +  $\overbrace{\hspace{4em}}^4$  (PAGODA)  
 x/d# x/d#-picc pizz sol# do# uasc sol# ff

**B**

$\overbrace{\hspace{8em}}^8$  +  $\overbrace{\hspace{4em}}^4$

$\overbrace{\hspace{2em}}^2$   $\overbrace{\hspace{10em}}^{10}$

cupa+pizz+ac clar

$\overbrace{\hspace{8em}}^8$   $\overbrace{\hspace{6em}}^6$

cel clar

$\overbrace{\hspace{6em}}^6$  +  $\overbrace{\hspace{8em}}^8$

get (d#) get

$\overbrace{\hspace{6em}}^6$   $\overbrace{\hspace{8em}}^8$  +  $\overbrace{\hspace{5em}}^5$

get (re\*) (ac ff-d-cupa) get (ac idem) timp, pizz etc

**C**

$\overbrace{\hspace{8em}}^8$  +  $\overbrace{\hspace{4em}}^4$   $\overbrace{\hspace{3em}}^7$   $\overbrace{\hspace{3em}}^3$

celestia tema cel+pic get

$\overbrace{\hspace{4em}}^4$  +  $\overbrace{\hspace{4em}}^4$

ff pp ∴ ff

$\overbrace{\hspace{3em}}^3$   $\overbrace{\hspace{6em}}^6$   $\overbrace{\hspace{3em}}^3$  +  $\overbrace{\hspace{8em}}^8$   $\overbrace{\hspace{8em}}^8$  +  $\overbrace{\hspace{8em}}^8$

ob get <=> C3 ∴ get <=> C3 ∴ ∴

$\overbrace{\hspace{1em}}^1$   $\overbrace{\hspace{8em}}^8$  +  $\overbrace{\hspace{4em}}^4$  +  $\overbrace{\hspace{3em}}^3$

x/d# sol# do# ∴ sol# ff

pp p p p p || get cel

SINTEISIS:  
 4+4+4 } 4.4.4 }  
 4+4+3 } 4.4.3 }  
 3+4+4 } 3.4.4 }  
 4+4+4 } 4.4.4 }  
 4+2 } 4.2 }

(Kavel: 'Ma mere l'oye)

Igual versión siguiendo el Bajo:

**A** **IV mor:**

Vlo/arpa: fa mi re do (4) + pizz (cp) fa do fa do (4)

fa do fa do pizz cp (3) + la la re re (4) + (coda) sol do sol do (4)

(Vl/arpa) 3 sol do sol do (3) + mi re do do (3) + pizz fa do fa do (4)

pizz la mi la mi (4) + la la re re (5) + P.T.C.T.

3 sp x e pi (3) + de la do sol (4) + mi e p arpa x (2)

fa mi re do (4) + fa do fa do (4)

fa do fa do (4) + la la re re (4)

sol do sol do (3) + sol do sol do (3)

mi re do sol (3) + fa do fa do (4)

re mi la mi (4) + fa la re si la la (4)

la la sol la (2, 3, 4)

do la do sol (4) + mi mi e p e p (2)

**B**

(mi) cfg (4) + (mi) f (6) + e (1)

(fa) cfg (4) + (fa) f (6)

(re) set (3) + (re) cfg (2) + (re) f (3)

(mi) ob ANIMANDO (4) + (mi) sol cfg (2) + (mi) f (3)

cl cfg (4) + rls cfg (4) + gbs rls (4) + e f f (4) + f f (9) + f f (5)

**VIVO**

**A**

fa (3) + (4) + (4) + (3)

cl cfg (4) + (4) + (4) + (3)

ob Expresivo (4) + (4) + (4) + (5)

cl (4) + (4) + (4) + (5)

ANIMANDO (4) + VIVO (5)

**Code**

arpa (1)

nl solo (4) + (4) + (4) *rall*

arpa/picc cello (3) + (4)

acorde arpa (4) + ac arpa e p e p

**A** **mujer SINTEISIS:**

fa (3) + (4) + (4) + (3)

re (4) + (4) + (4) + (5)

[como B-4] ob (4) + (4) + (4) + (5)

V Mos.

4 + 4 + 4 5 1 1

pp < p < > < > < > (sol) rit con

6 + 1 + 2

pp vla-cl cs vl-gu ffg m dux >

4 + 4 + 2 + 3

pp rtsolo + cel + vla vlsola vl cel vla

4

f vla ve II ve I

Retenu tpo

4 6

pt vlcs II cl-ob I cel-plat cresc

3 + 2 +

f i z

