

Exposición

2
Introd [||:]

4 2 4 2
mi b p ... sol mi b sol la b si b

8
mi b tema nuevo (mi^b) fa la b (la^b)

8 2 4 2 + 2
si b ped Beys fp si b ped vls

8
mi b tema 8^{va} ff dom mi b (mi^b)

8 4 4 + 4
fa ob el fut ve ... z⁹ b f i i

8 4 + 4
si b Bassi p 6 2 2 2 4 + 2 d-d-b 2

mi b f (esp. p^{ro}) sol m fa b dom si b mi b si b⁴ fa⁴ ff V

PATRIMONIO UC

[síntesis:
(2+2+2) 4+2 + 4+2]

8 4
p 2^o tema (mad) & i f (cuad) mad
(si^b) > do fa >> si^b m la^b 7

4 4 6 2
p << p << >> << >> 6 2
f (esp. p^{ro}) sol m fa b dom si b mi b si b⁴ fa⁴ ff V

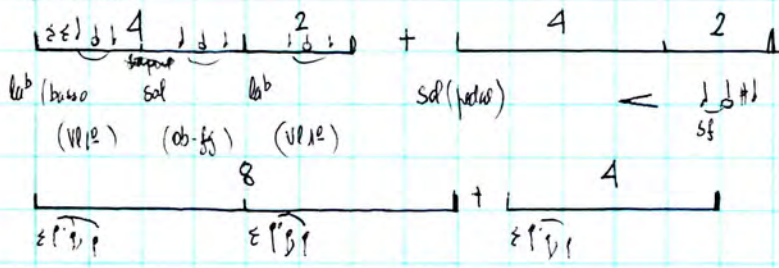
8 2 4
si b >>>> f^o b mad si b (cuad) >>>> + mad

5 4 4 + 8
(1) (4) & etc mi b & p & f & f (do⁷) fa celli (sol^o) fa (sol⁴) Basso mi b si b fa 7

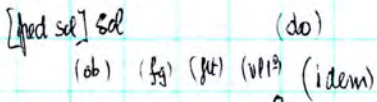
4 4 [4] ||
si b i i i i i si b p f p sp q 2a si b fa celli (repetición) ||

Desarrollo

(transición)

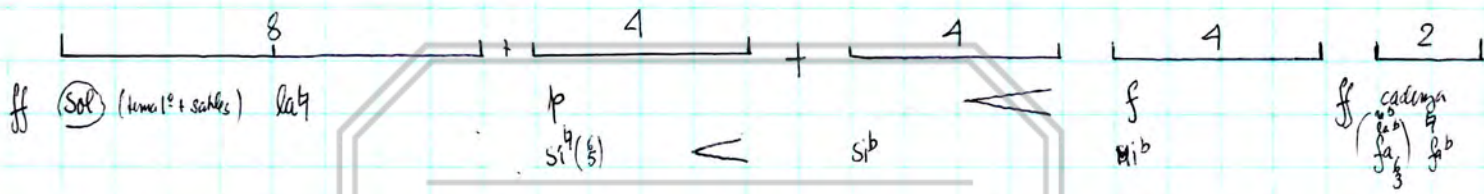
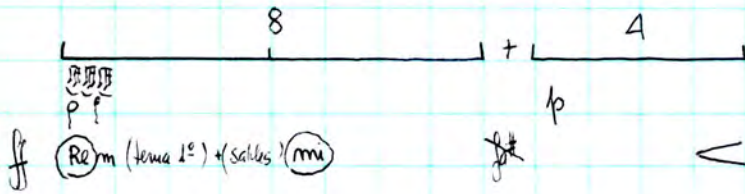
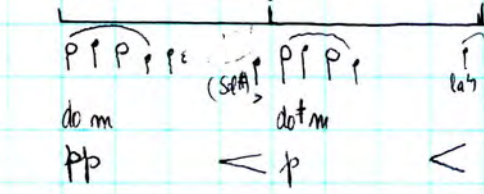


Sección de progresiones:

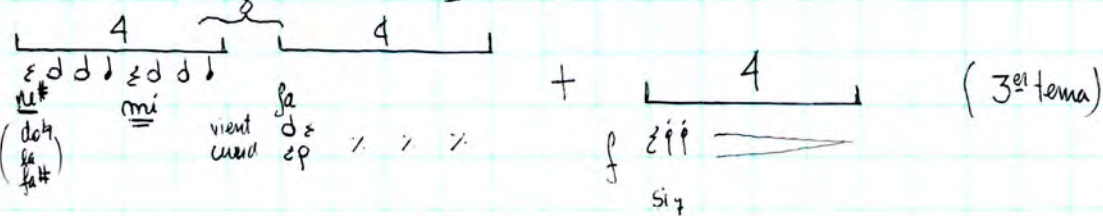
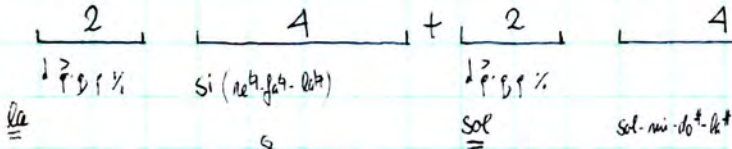
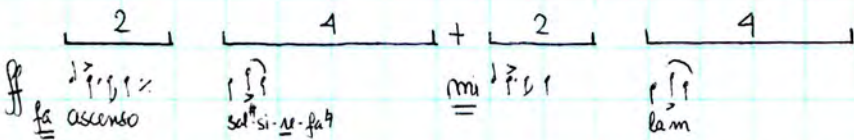
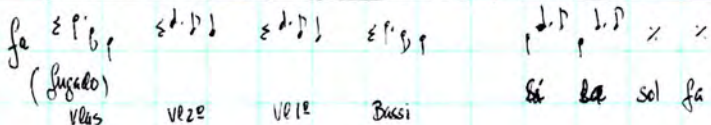
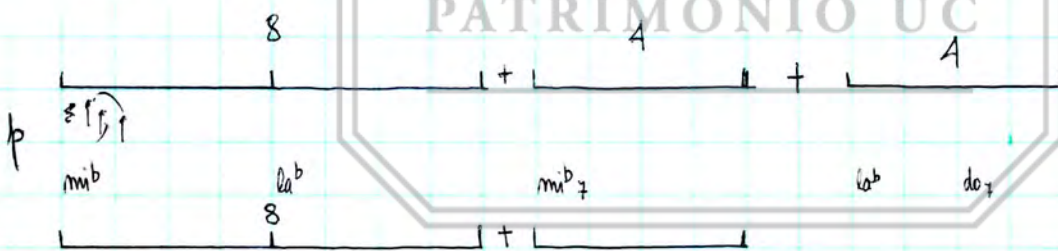


(Solus transición)

(Solus tema 1º)



PATRIMONIO UC



Reexposition:

Handwritten musical notation for the first system of the reexposition section. It consists of three staves with various notes and dynamics.

- Staff 1: *mi^b* tema alti *fp*. Notes: *sol*, *sol*, *do^b*. Dynamics: *ff*, *f*. Bar lengths: 4, 2, 4.
- Staff 2: *fat* tema cor. Notes: *reb¹¹* tema *flt-vcl^o*. Dynamics: *p*. Bar lengths: 8, 8, 2, 4.
- Staff 3: *f mi^b* tema viento-vl (*mi^b*) *fa*. Notes: *sol*, *la^b*, *si^b*, *si^b*. Bar lengths: 8.

Handwritten musical notation for the second system, including structural analysis and a large watermark.

- Staff 1: [estructura id exp transportada] *do^b*, *si^b*. Notes: *do^b*, *la^b*, *si^b*, *do^b*. Dynamics: *p*. Bar lengths: 8, 4.
- Staff 2: [id exp] *mi^b* Bassi. Bar length: 8.
- Staff 3: [id exp] *ac dismin* (*f* espadas). Notes: *do*, *mi^b*, *la^b*, *mi^b*, *si^b*. Dynamics: *f*. Bar lengths: 6, 4, 2.

Large watermark: PATRIMONIO UC

Handwritten musical notation for the third system, including a second theme and further structural analysis.

- Staff 1: [idem exp] 2^o tema (mad). Notes: *fa*, *si^b*, *mi^b*, *reb⁷*. Dynamics: *p*. Bar lengths: 8, 4.
- Staff 2: [id exp] Bassi. Notes: *ob*, *pp*, *si^b*. Dynamics: *p*. Bar lengths: 4, 4, 4, 2.
- Staff 3: [id exp] *mi^b*. Notes: *re⁷*, *mi^b*. Bar lengths: 8, 2, 4.

Handwritten musical notation for the fourth system, including further structural analysis.

- Staff 1: [id exp] Notes: *do*, *re^b*, *re^b*, *mi^b*, *la^b*, *mi^b*, *si^b*. Dynamics: *pp*. Bar lengths: 5, 4, 4, 4, 8.

Handwritten musical notation for the fifth system, including a coda.

- Staff 1: (*mi^b*) Notes: *pp*, *fp*, *mi^b* (mad), *f* (*Re^b*), *p*, *ff* (*do*). Dynamics: *p*. Bar lengths: 4, 2, 4, 4, 4. Coda.

coda

8 4 + 4 8

do tema VI^{II} ne mi fa mi^b - sol^b - si^b - do^b (V)

pp VE 1^o + VE 2 + pizz celli^o

fa tema 3^o obs sib mi^b tema 3^o fls-d mi^b set^b

p > > > $\frac{f}{p}$ $\frac{f}{p}$ $\frac{f}{p}$

VEs sib (progression desc.) la^b sol^b fa fa

8 4 8

sib $\frac{f}{p}$ $\frac{f}{p}$ $\frac{f}{p}$ sf (sib sib mi^b sib) +

pp Basso (passos) Sib clarinet (+passos) mad (+passos)

8

$\frac{f}{p}$ do (passos) la^b pp sib (VI¹) p

8 8

mi^b tema 3^o (fa) sib² mi^b tema VI (fa) sib²

8 8

mi^b tema Basso-VI¹ cresc ← mi^b tema 4^{ta} f mad tema

2 + 8

VI mi^b fa fa[#] sol la^b sol fa mi^b re^b

VEs f / Basso p^o VI ff

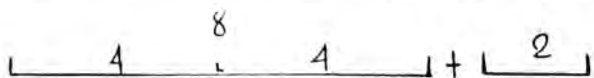
p P^o VI mi^b mi^b

8 3

f sib² + $\frac{f}{p}$ + $\frac{f}{p}$ ff $\frac{f}{p}$ $\frac{f}{p}$ mi^b p^o p^o p^o



ob tema
 fct fg (toh) sol V₇ f f p p p
 sf sf sf



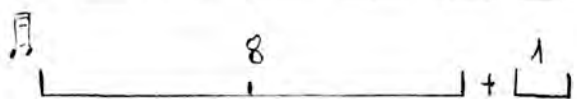
ob₇ tema vls (fa) (smpre p) f f f f
 p (tsurpre)

MINORE

ob₁₁ tema vls (smpre) f f f f
 p do p f p p

(marcha-transición)

marcha-transición (I)



ob₁₁ (tema marcha) vls sotto voce
 (and) f sf p
 sf f f f

fuga

PATRIMONIO UC

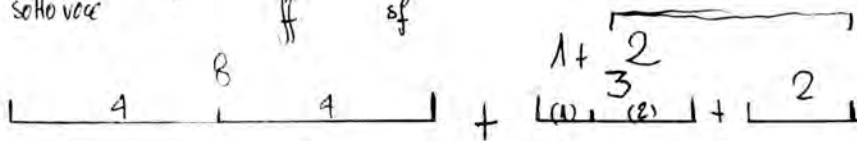
fa vl 2° do vl I fa vls-celli do celi-CB. fa mad
 (c.s. f) (c.s. f) (c.s. cl) (c.s. vl 2°) f (c.s. vl 1°)

mib CORNI varicudo tema
 Bass f sf sf sf sf sf sf sf sf sf sf
 p sf sf sf sf sf sf sf sf sf sf

marcha-transición (II)



sol marcha vl sotto voce
 bob p p sf sf



ob₁₁ Bassi
 vl 1-2 vl 1°

vl 1-2 Bassi
 p p

Reposición (ver p. 1)

Fugadas:

fuga 1: p p p p *rectus*

(en la 1^a fuga está el 2^o - 1^o)

fuga 1 (1)

do fugato VI
p

sol VI II
p

6 2

do vlns
p

sol Bassi
p

obs p p p
do fa do

6 3

sol VI I
f

do fa' fa si^b si^b mi^b mi^b la^b

VI II vlns VI I Bassi

6 2 2 2 2 + 3

f p p p f

VI II VI I (espadas)

8 4

(tema set-VI 1^o 2^o)

ff

fuga 2 (2)

subgalema do oboe
fa

cornu (fa clar-flet)

fuga 2: p p p p *INVERTIDOS*

(en la fuga 2 está el 1-2-5-6-7)

4 4 3

mi^b VI II
pp

si^b vlns
pp

mi^b Bassi
p (+cp flauta)

(espadas)

mi^b VI II^o
f (+cp.coe)

6 1 6 2

6 5 6 6

ff

VI II etc (ascendente)
VI II fa sol sol la^b si^b do

ff

p p p p

maderas + brass + tp.

6 7

VI II etc (desc)
la^b sol fa mi^b re^b do

pedal si^b

6 4

normativo desc

pedal si^b

6 4

VI I Bassi

Poco ANDANTE

