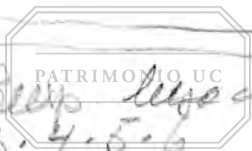


HOTEL MIA

① Up. lejeune de
3-4-5-6 (des mad)

8
8-UP + (10-11-12-13-14-15)
des



③ Up. lejeune de
3-4-5-6

8
8-UP + 4
CORN

8 (+1) + 4

MIAMI INTERNATIONAL AIRPORT
P.O. BOX 592077
NW 20TH ST AND LEJEUNE RD
MIAMI, FL 33159-2077
(305) 871.4100

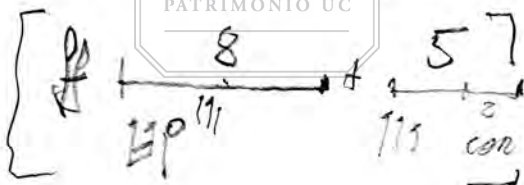
cada

TOLL FREE 1.800.327.1276
TOLL FREE IN FL 1.800.421.0694
TELEX 8108484781
CABLE AIRPORTEL

② Des. (2ª parte)

9 + 4
pp *mf*

4 + 4 + 2 + 4
pp *mf*



mod leg
ppp

HOLIFELMIA

① Exp final:

Suena de 3-4-5-6

Musical notation for the first exercise. It starts with a treble clef and a 3/8 time signature. The notes are G4, A4, B4, C5. There is a fermata over the C5. Below the staff is the word "des". To the right, there is a 4/4 time signature with notes G4, A4, B4, C5. Above the staff is the word "mad".

② Des 2ª parte 4 comp

Suena de mixo

Musical notation for the second exercise. It starts with a treble clef and a 4/4 time signature. The notes are G4, A4, B4, C5. Below the staff is the word "des".

Musical notation for the 4th comp. It starts with a treble clef and a 4/4 time signature. The notes are G4, A4, B4, C5. Below the staff is the word "comp".

MIAMI INTERNATIONAL AIRPORT
 P.O. BOX 592077
 NW 20TH ST AND LEJEUNE RD
 MIAMI, FL 33159-2077
 (305) 871.4100

TOLL FREE 1.800.327.1276
 TOLL FREE IN FL 1.800.421.0694
 TELEX 8108484781
 CABLE AIRPORTEL

leg mist

③ Resp
Jugo de 3.4.5.6

8 + 4
Cononasi

8 (1) + 4 Cononasi

H
PATRIMONIO UC
CODA

-
Lunes 18
Miercoles 19

Miercoles 20
Jueves 21
Viernes 22

Lunes 25
Martes 26

Miercoles 27

Jueves 28

Viernes 29

Concierto

10³⁰ (?)
2²⁰ - 4³⁰ 5¹⁵ - 6⁰⁰ - 7⁰⁰

10²⁰ - 11⁰⁰ - 12⁰⁰
2²⁰ - 3⁰⁰ - 4⁰⁰

cerrado

lugares normales

Concierto 10³⁰ / 11⁰⁰ / 12⁰⁰

2²⁰ -

10¹⁰
2²⁰

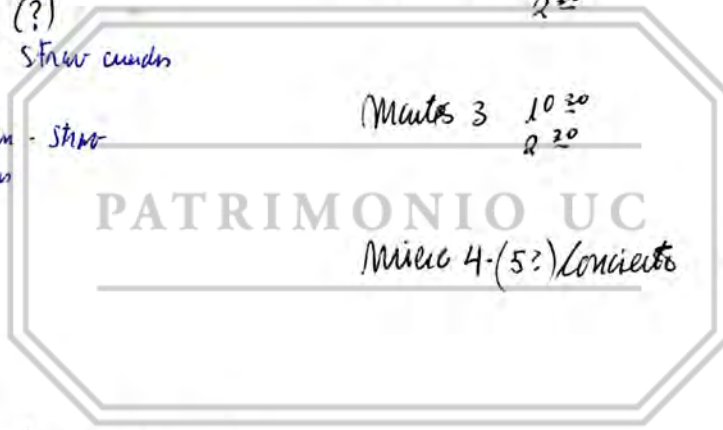
Miércoles - viernes

Lunes 2 10²⁰
2²⁰

Martes 3 10²⁰
2²⁰

Miércoles 4 - (5?) - Concierto

Wilem / Marios / Miguel



Exp:

p
3 + rientos

5 + Cuentas

Cuent + 5

1cl +
1 Cuent H

Des.

4 - rnt p

4 ff Cuent

4 temas Tema

9 Tema

Reexp

Relazioni

BRANNO N°4
(1er MAR)

$$4 + 4 / + 4 + 4 + 2 /$$

tema ob

$$4 + 4 ! (4+2) + 4 +$$

tema 6 +

$$8 + 4$$

marcato
↓. A 1 1 1
3
nexo

PATRIMONIO UC

2° tema

$$8 + 8 /$$

celi rls

$$4 + 4$$

mezzo
marcato

$$4 + 4 + 6 + 4 +$$

nexo
marcato
pizz
sf

Exp.

ped mi Tema 1^{er} (Canon mad)

8
4 + 4

sol
do# p rrrr
do# r r r r
si re ob
f

8
4 + 4

sol
do do# re re do# si-la

8
4 + 4

sol sol mi
si la sol fa# sol fa# mi do# do# si la
p r r r r p p p p
mad / re

8
4 + 4

si fa#
f

4 (2^o tema)

si mexo
(Mentes) cuord

8
4 + 4

1^a uelli
2^a re
f

8
4 + 4

ped (si) ped cuord (cuord pante) mi
re si sol tema Nero (mentis) (sol mi do)

prizz sol#

10
6 + 4

sol fa#
prizz c

si prizz + (mad sincp)

si re lejeto
si sol# re# do# fa#

8
4 + 4

re# mf mel ob-cl (si) ob-coa
re# do# si

(Gran nexo a desarrollo)

3
 re^b
 (Si) pedal tpt
 Sol# $\frac{1}{2}p$
 cuerdas
 pp

4
 +
 re[#] $\frac{1}{2}p$ mi fa[#] fa[#]
 tema nexo mod
 pp

5
 f^{id}
 (Si) ma tpt
 Sol#
 mi# arp cuerdas

6
 4 + 2
 +
 re[#] mi fa[#] ma
 f $\frac{1}{2}p$
 cuerdas
 leg
 (fa[#])

3 + 4 + 5 + 6 + 8 + 4
 $\frac{1}{2}p$ tpt
 $\frac{1}{2}p$ mod
 $\frac{1}{2}p$ tpt + 2
 $\frac{1}{2}p$ cuerdas
 $\frac{1}{2}p$ cuerdas
 $\frac{1}{2}p$ cuerdas
 $\frac{1}{2}p$ cuerdas

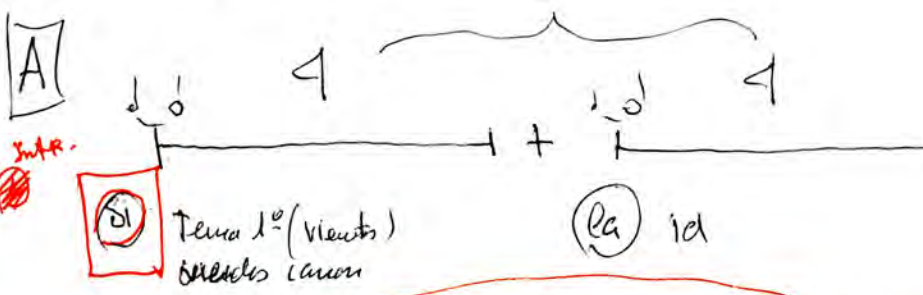
8
 4 + 4
 +
 re[#] $\frac{1}{2}p$ fa[#] 111
 3
 Sol#
 Sol# fa[#] fa[#]
 f^{id}

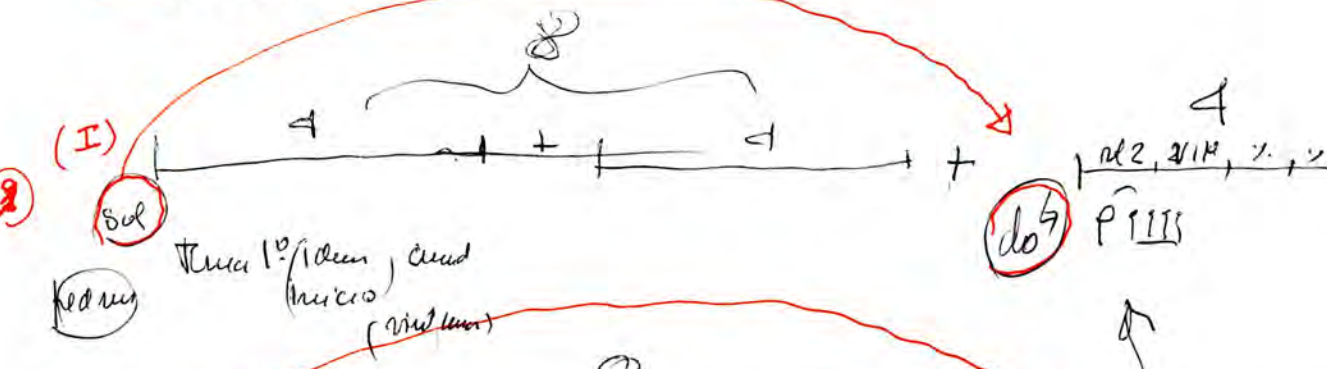
Sol# fa[#] fa[#]


PATRIMONIO UC

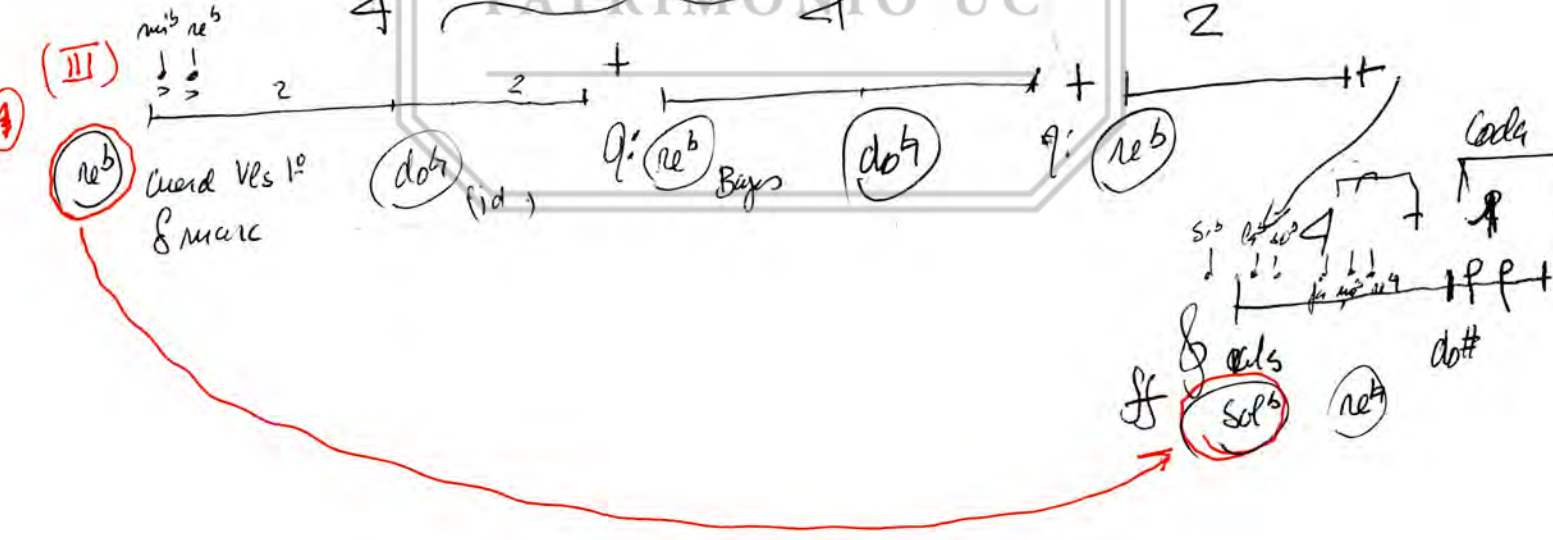
Desarrollo

Desanallo:

① **Int.** 

② **I** 

③ **II** 

④ **III** 

Síntesis:

1) **Int.** $(\text{si} - \text{la})$ $4+4$

2) **Tema I** $\text{sol} = \frac{8}{4+4} + \text{do}$ $\frac{4}{\text{red. exp.} \leftrightarrow}$

3) **Tema II** $\text{si}^b = \frac{8}{4+4} + \text{mi}^b$ $\frac{4}{\leftrightarrow \text{id}} \text{ f}$

4) **Tema III** re^b $\frac{8}{4+4} + \text{re}^b$ $\frac{2}{\text{Coda}} \text{ 1}$

+ **Conclusion:** $\text{sol}^b \text{ re}^b + \text{do}^\#$

34

sol → do
 si^b → re^b
 re^b (4^{##}) → si^b
 do^{##}

1987

ABRIL

MAYO

JUNIO

1 Mi
2 Ju
3 Vi
4 Sa
5 Do
6 Lu
7 Ma
8 Mi
9 Ju
10 Vi
11 Sa
12 Do
13 Lu
14 Ma
15 Mi
16 Ju
17 Vi
18 Sa
19 Do
20 Lu
21 Ma
22 Mi
23 Ju
24 Vi
25 Sa
26 Do
27 Lu
28 Ma
29 Mi
30 Ju

1 Vi
2 Sa
3 Do
4 Lu
5 Ma
6 Mi
7 Ju
8 Vi
9 Sa
10 Do
11 Lu
12 Ma
13 Mi
14 Ju
15 Vi
16 Sa
17 Do
18 Lu
19 Ma
20 Mi
21 Ju
22 Vi
23 Sa
24 Do
25 Lu
26 Ma
27 Mi
28 Ju
29 Vi
30 Sa
31 Do

1 Lu
2 Ma
3 Mi
4 Ju
5 Vi
6 Sa
7 Do
8 Lu
9 Ma
10 Mi
11 Ju
12 Vi
13 Sa
14 Do
15 Lu
16 Ma
17 Mi
18 Ju
19 Vi
20 Sa
21 Do
22 Lu
23 Ma
24 Mi
25 Ju
26 Vi
27 Sa
28 Do
29 Lu
30 Ma

PAZIMONIO UC

1987

ABRIL

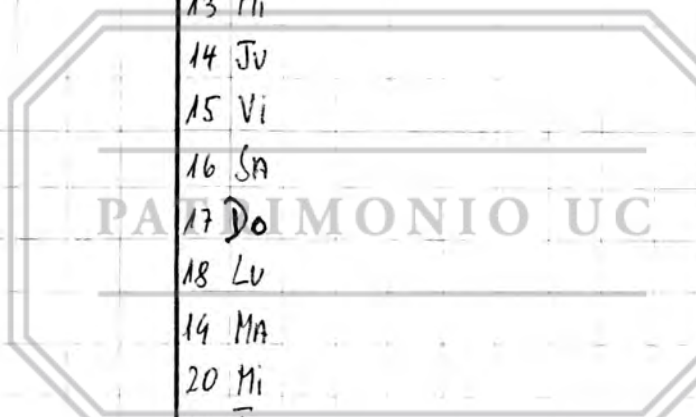
MAYO

JUNIO

1 Mi
2 Ju
3 Vi
4 Sa
5 Do
6 Lu
7 Ma
8 Mi
9 Ju
10 Vi
11 Sa
12 Do
13 Lu
14 Ma
15 Mi
16 Ju
17 Vi
18 Sa
19 Do
20 Lu
21 Ma
22 Mi
23 Ju
24 Vi
25 Sa
26 Do
27 Lu
28 Ma
29 Mi
30 Ju

1 Vi
2 Sa
3 Do
4 Lu
5 Ma
6 Mi
7 Ju
8 Vi
9 Sa
10 Do
11 Lu
12 Ma
13 Mi
14 Ju
15 Vi
16 Sa
17 Do
18 Lu
19 Ma
20 Mi
21 Ju
22 Vi
23 Sa
24 Do
25 Lu
26 Ma
27 Mi
28 Ju
29 Vi
30 Sa
31 Do

1 Lu
2 Ma
3 Mi
4 Ju
5 Vi
6 Sa
7 Do
8 Lu
9 Ma
10 Mi
11 Ju
12 Vi
13 Sa
14 Do
15 Lu
16 Ma
17 Mi
18 Ju
19 Vi
20 Sa
21 Do
22 Lu
23 Ma
24 Mi
25 Ju
26 Vi
27 Sa
28 Do
29 Lu
30 Ma



Recxp:

(Variante: -4)

f do do# re u#
(variante: 4+4 + Salto, acortando exp.)

(2^o tema)

mi sol
si do
si mezo
nient cuid

PATRIMONIO UC

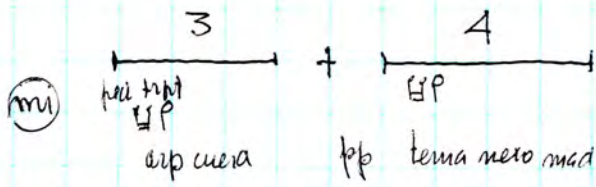
si
f
1^a celli
2^a vl

ped mi
fa
tema mezo
ped cuerdas

f
pizz
mi

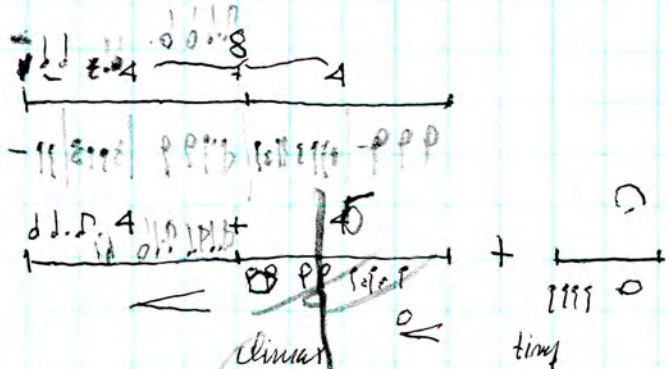
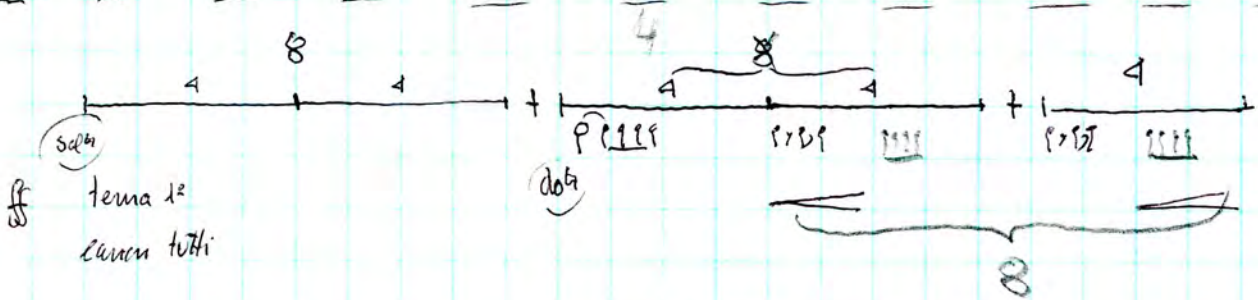
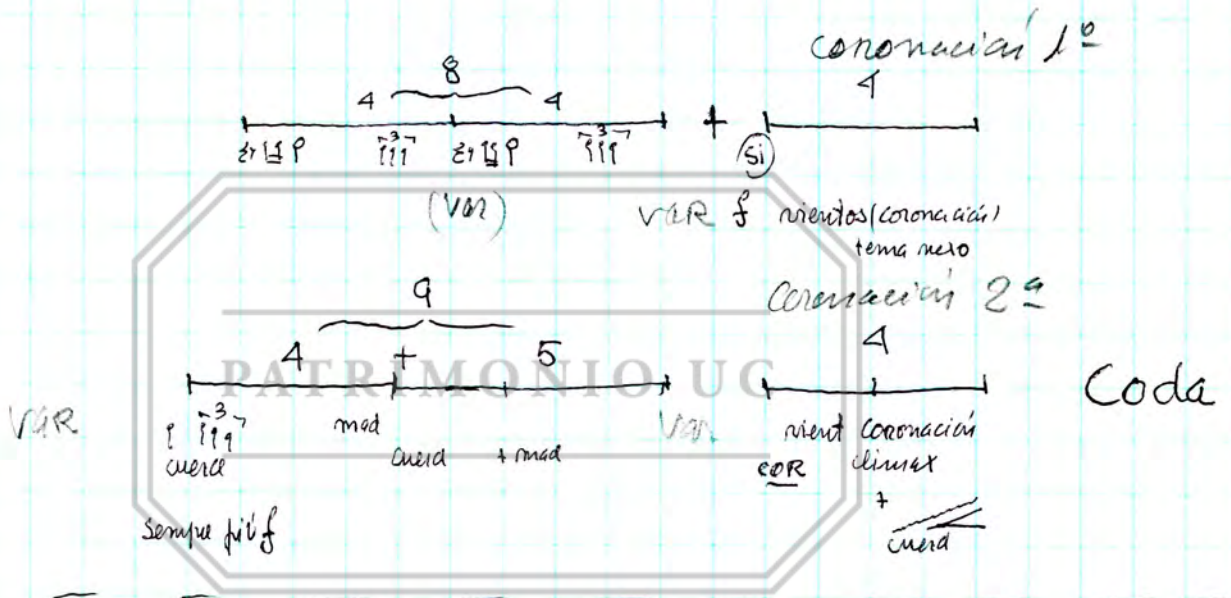
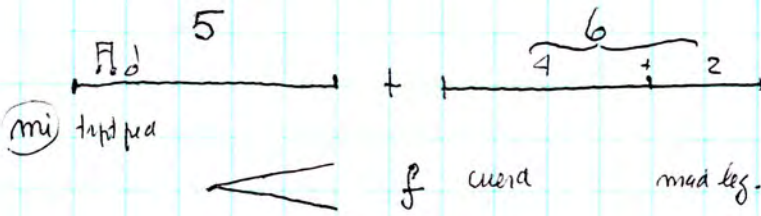
Sol#
mi
Sol#
mel ob/cor
su/cl/fg
Sol# f# % (mi)

(Gran mexo a coda)



$$(3 + 4 + 5 + 6) + 8 + 4$$

van van



Fim 1º Mov



Brahms #4, II

①

A

mi
COR mad
f

Sol#
mi
tema
cl + pizz
pp

Sol#
COR tema
si mad
f

Sol#
tema
pizz

mi
ped
rds (var) mel
ped cor-Bass
+ ped flt

fa#
3
f
mad
2
fa sol 2^{da} legato
cor ped fa#
f > p

B (Segundo tema)

si
mel cello
p

fa#
rel¹
des simpuras
p < f >

fa#
maa
idem
p < f >

fa#
cor/fg
cell
conra
p >

fa#
ob.
cua
cup
conal
op flts

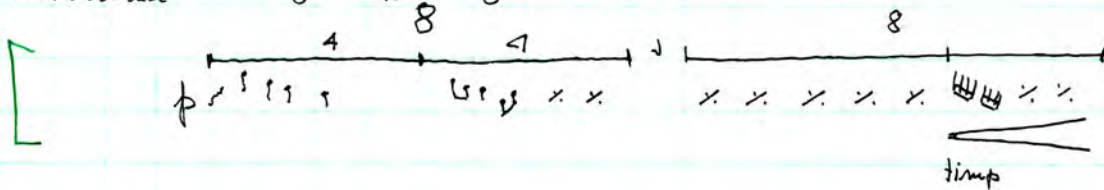
A'

A-1

Analisis formal

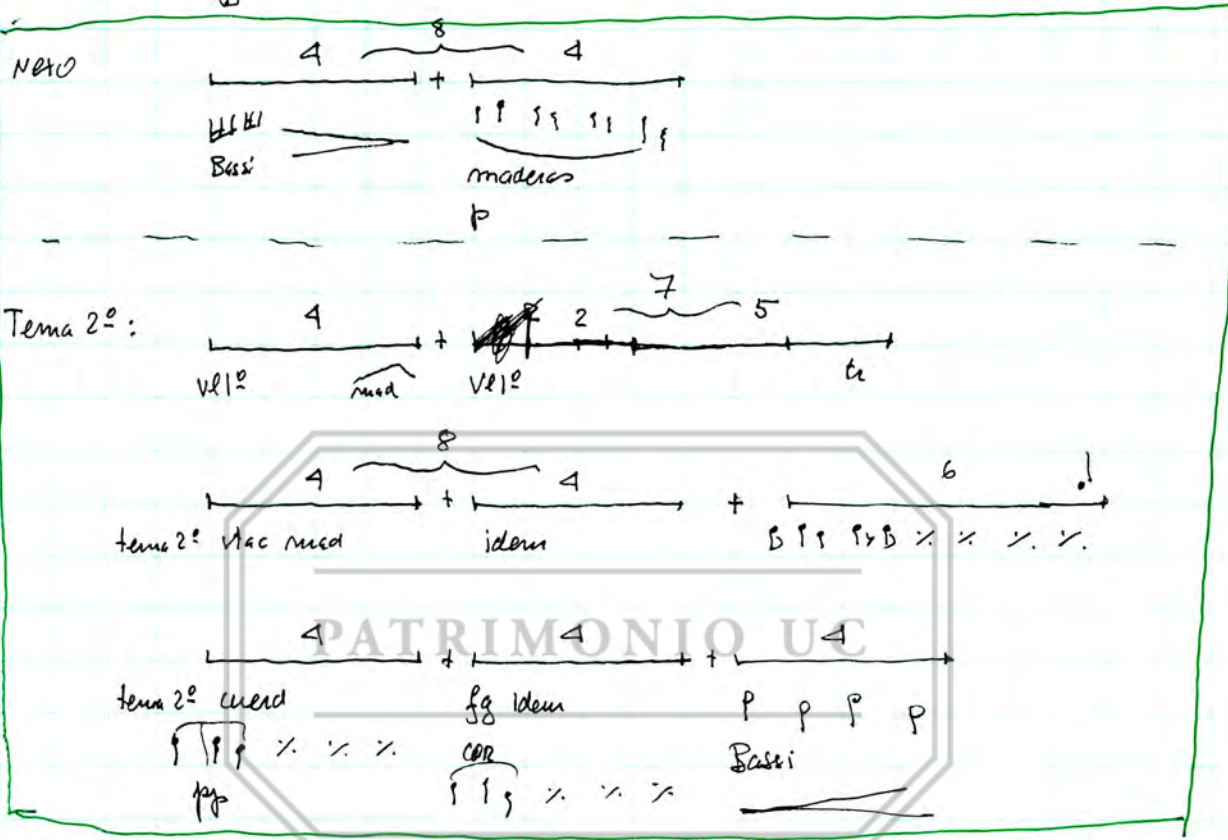
1) Tema 1^o
tomo escala desc

5 + 4 + 4 + 5
8 + 8



2) Tema 1^o

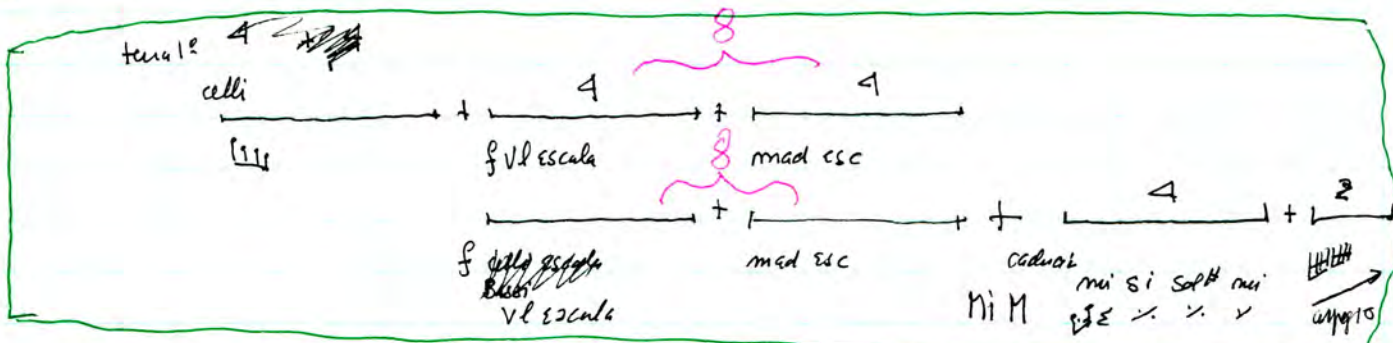
ff 5 + 4



A-2

3)

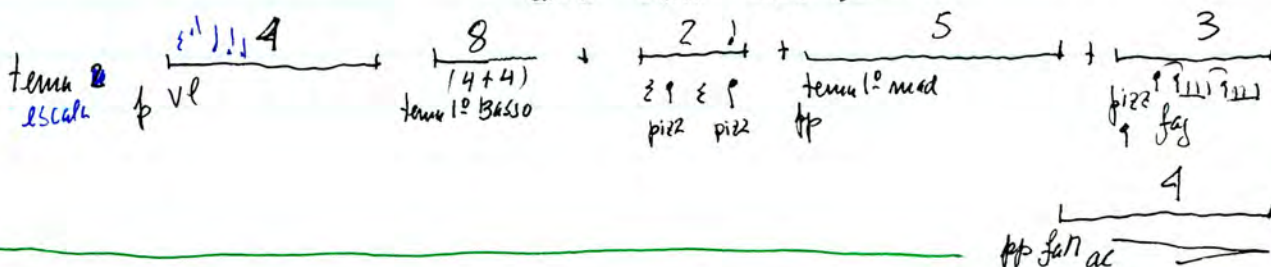
tema 1^o 4 + 8 + 6 + 6
acordes ff p acordes ff HI

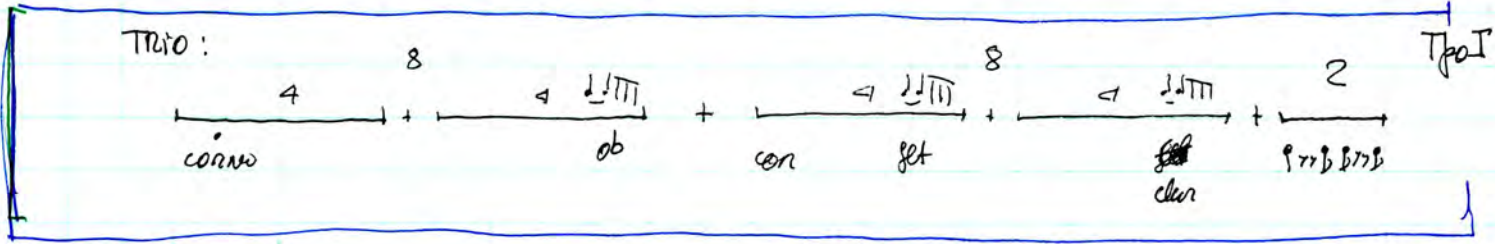


4)

tema 1^o 4 + 4
mod ff cuerd ff

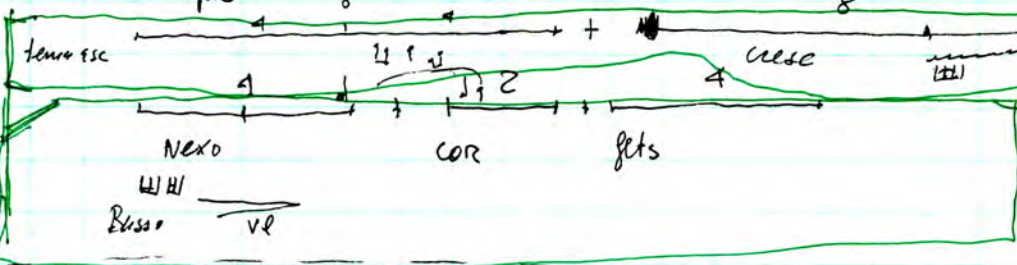
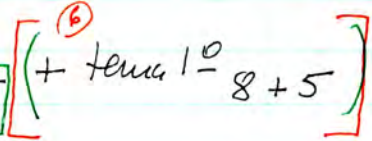
8 + 4 + 4
Basso mod cuerd



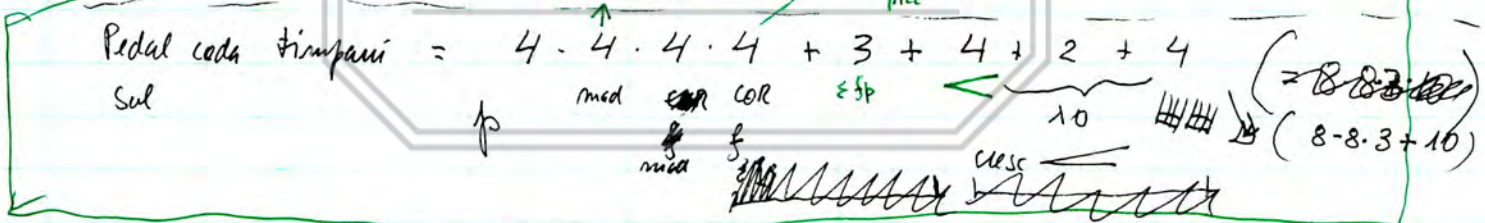
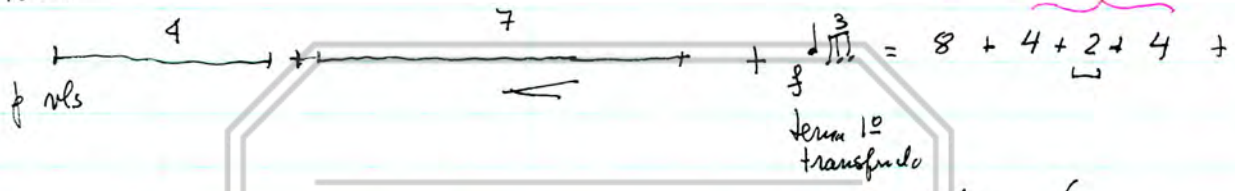


Allegro

(5)

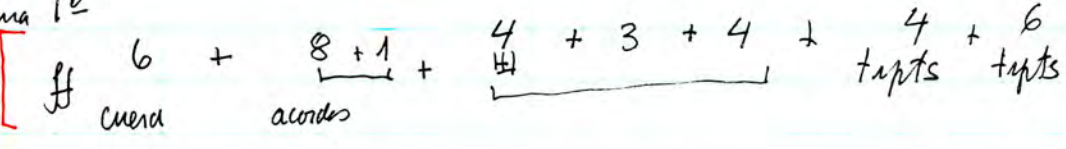


2^o Tema

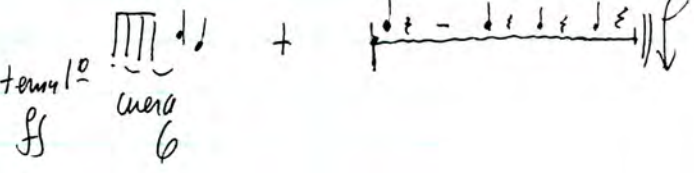


Tema 1^o

(7)



(8)



BRAMMS IV Sinf (4º Mov)

I:
II:

1 Tema 2-3-4 ||
vientos coral vientos vientos
flauta clarinetes fagot & stacc

Cuerdas 1-2-3-4
(P | D... P P >)
ff

Cuerdas f

5) f 4 + 4 fb >

6) f 4 + 4 fb >

I: Tema (vientos)

a) 1 - 2 - 3 - 4 (= 4 períodos)
tema: pizz cord, (ob), (stacc) (8 comp %)
orient, vt, > cello, vt I

b) 5 - 6 - 7 - 8 (= 4 períodos)
crescente
f v b

c) contrapunto f + fb
9 - 10 (= 2 períodos +)

d) acordes <-> cuerdas - vientos (= 2 períodos)

III

acordes <-> cuerdas - vientos

total períodos = 4 + 4 + 4 (= 2+2) = 12 períodos

1) 8 solo flauta 2) cuerdas + respuesta vientos

3) Coral trombones 4) Coral maderas (+rit)

total = 4 períodos

IV 3/2

V 3/4

1) vientos
f

2) trueno + vientos
p

3) f todos

1 (= 3 períodos + 8 comp %)

4) pesante f

5) pesante

6) f escalas (6+2)
f + p

4 (= 3 períodos)

7)

8)

Schzzo
pp

Schzzo
f

1 f Int. Scherzando
2 (= 2 períodos)

1 2
Introducción Scherzando

Reexp

VI

Recapitulaci3

S3ntesis reexp:

(0) 1 - 2 - 3

(Nova Coral) 1 - 2 - 3 - 4 + 4 comp. ||
 < nit

(var: falta conll niente)

① + ② + ③

f coral
 (+ III
 5

+ tema niente
 f legato + tenuto
 (idem exp obra + quid + ahen)

niente legato
 (ff) p
 (idem exp p ahen)

VII

① ~~diferente~~
 niente + cuerdas
 ↓
 (var: paucitas notas
 2ª cuerdas exp + niente)

②
 idem
 f
 (como exp poco ahen
 legato maderas)

③
 div niente
 p 3^{es}

④
 medidas
 ff tema 3^{es}

+ 4 comp
 cresc s rit

VIII Più allegro
 d.

① f p. 8

② d. d. p. p. 8 + 4

③ p p p p 8

(= 4 comp)

④ 8 + 8 + 4 + 8

⑤ p p p p p p p p 8 + 8 + 4

+ 4 comp

ppppppppp
 Sincofos

⑥ Cadenza
 p p p p |
 [4 + (4)]
 p p

+ 3 comp
 p p p | p . T p p p ||

8 + 3)

S3ntesis Più Allegro

① - ② + 4 comp ③
 tema pregunta

④ ⑤ + 4 comp ⑥
 p p p p p p p p
 pregunta dismiva

+ 3 comp || p
 p p p | p . T p p p
 V I

1ª Tema

① $5 + 4 + 4 + 5$
 └──┘ └──┘
 tipos

② $5 + 4$

③ 4

④ $4 + 4$

⑤ $4 + 5$

⑥ $8 + 5$

⑦ $6 + [4 + 6]$



I

Tema
 ff 4 + 2 + 4
 sf. le sf. mi re, le sf. mi re
 p 1
 sf. tapt
 sf. tapt

Tpts
 4 + 8 + 4
 p 1
 sol fa sol, si^b le^o sol, sol — fa sol, re sol sol
 IIIII

8 + 5 + 3
 p le sol mi re, le sol mi re
 II Bassi
 Si sol si
 next

Tema (inv)
 ff 4 + 2 + 3 + 4 + 8 + 4
 ff III
 IIIII
 dim
 Basso
 fet
 p

2º tema
 p 4 + 2 + 5
 gregioso
 uerdos

tema 2º
 mad stacc
 8 + 2 + 4 + 6
 1 1 1 1 1 1 1 1 1 1 1 1

PATRIMONIO UC

arco
 legato
 4 + 4 + 4
 ff cor
 Bassi
 timp

Tema 1º
 ff 4 + 4 + 8 + 6
 ff p p d d p p d d p d p d p d
 ff p ff p ff p
 accordos

6
 p III le sol mi re > d d d d III mi mi re

4
 tema bassi

Brahms IV Sinf 1^{er} mov. Desirello

Handwritten musical notation on a single staff, featuring a treble clef, a key signature of one sharp (F#), and a 4/4 time signature. The notes are mostly whole notes with some rests.

Handwritten musical notation on a single staff, featuring a treble clef and a 4/4 time signature. The notes are mostly whole notes with some rests.

Handwritten musical notation on a single staff, featuring a treble clef and a 4/4 time signature. The notes are mostly whole notes with some rests.

Handwritten musical notation on a single staff, featuring a treble clef and a 4/4 time signature. The notes are mostly whole notes with some rests.

Handwritten musical notation on a single staff, featuring a treble clef and a 4/4 time signature. The notes are mostly whole notes with some rests.

Handwritten musical notation on a single staff, featuring a treble clef and a 4/4 time signature. The notes are mostly whole notes with some rests.

Handwritten musical notation on a single staff, featuring a treble clef and a 4/4 time signature. The notes are mostly whole notes with some rests.

Handwritten musical notation on a single staff, featuring a treble clef and a 4/4 time signature. The notes are mostly whole notes with some rests.

Handwritten musical notation on a single staff, featuring a treble clef and a 4/4 time signature. The notes are mostly whole notes with some rests.

Handwritten musical notation on a single staff, featuring a treble clef and a 4/4 time signature. The notes are mostly whole notes with some rests.

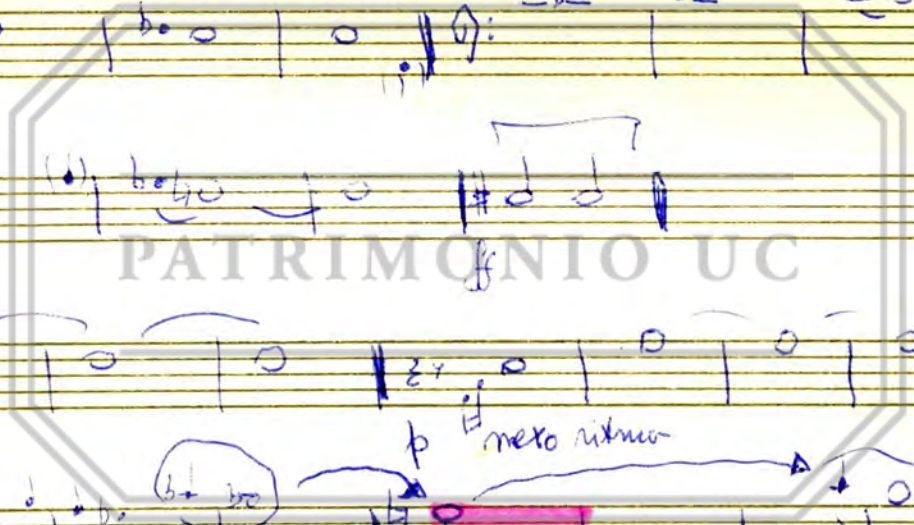
Handwritten musical notation on a single staff, featuring a treble clef and a 4/4 time signature. The notes are mostly whole notes with some rests.

Handwritten musical notation on a single staff, featuring a treble clef and a 4/4 time signature. The notes are mostly whole notes with some rests.

Handwritten musical notation on a single staff, featuring a treble clef and a 4/4 time signature. The notes are mostly whole notes with some rests.

Handwritten musical notation on a single staff, featuring a treble clef and a 4/4 time signature. The notes are mostly whole notes with some rests.

Handwritten musical notation on a single staff, featuring a treble clef and a 4/4 time signature. The notes are mostly whole notes with some rests.



X

nexo arpeggio

nexo ritmo

nexo arp (+ tema)

nexo arp (+ tema)

nexo arp (+ tema)

nexo ut

nexo ut

nexo ut

nexo ut

nexo ut

nexo ut

nexo ut

arp

Recap

Exposición 3 RAHNS Sing No 4, 1er Mov.

1

Recap.

Handwritten musical notation for the first system, including treble and bass staves with notes and rests.

Handwritten musical notation for the second system, including treble and bass staves with notes and rests.

Handwritten musical notation for the third system, including treble and bass staves with notes and rests.

Handwritten musical notation for the fourth system, including treble and bass staves with notes and rests.

Handwritten musical notation for the fifth system, including treble and bass staves with notes and rests.

Handwritten musical notation for the sixth system, including treble and bass staves with notes and rests.

Handwritten musical notation for the seventh system, including treble and bass staves with notes and rests.

PATRIMONIO MUSICAL

Recap. 2da Tema

(2)

2^a yema

1^a cell 2^a als 8^{as}

rexp

Handwritten musical notation for the first system, featuring a treble and bass staff with notes and rests.

rexp

Handwritten musical notation for the second system, including a treble staff and a bass staff with a 'ritmo' marking.

rexp

Handwritten musical notation for the third system, showing a treble and bass staff with various notes and accidentals.

rexp

Handwritten musical notation for the fourth system, with a large watermark 'PATRIMONIO UC' overlaid.

rexp

Handwritten musical notation for the fifth system, featuring a treble and bass staff with notes and rests.

Handwritten musical notation for the sixth system, including a treble staff and a bass staff with 'ritmo' and 'ritmo' markings.

Handwritten musical notation for the seventh system, showing a treble and bass staff with notes and rests.

ritmo allegro

ritmo

84

Handwritten musical notation on two staves. The top staff is in treble clef with a key signature of one sharp (F#) and a 2/4 time signature. The bottom staff is in bass clef. The music consists of several measures of notes and rests.

no resp

dimuella

Handwritten musical notation on two staves. The top staff is in treble clef with a key signature of one sharp (F#). The bottom staff is in bass clef. The music includes notes, rests, and dynamic markings.

$(3 + 4 + 5 + 6) +$

Resp

tema rit f 4 + 4 + 4

4.4.4

+ tema $|||$ 3 4 + 5 +

4.5.4
Coda

Corona +
apuntado ff 4

noo ritmo

Handwritten musical notation on two staves. The top staff is in treble clef with a key signature of one sharp (F#). The bottom staff is in bass clef. The music includes notes, rests, and dynamic markings.

PATRIMONIO UC

whocunquis

Handwritten musical notation on two staves. The top staff is in treble clef with a key signature of one sharp (F#). The bottom staff is in bass clef. The music includes notes, rests, and dynamic markings.

$|||$ 3 3

Handwritten musical notation on two staves. The top staff is in treble clef with a key signature of one sharp (F#). The bottom staff is in bass clef. The music includes notes, rests, and dynamic markings.

Handwritten musical notation on two staves. The top staff is in treble clef with a key signature of one sharp (F#). The bottom staff is in bass clef. The music includes notes, rests, and dynamic markings.

Coda

Brabus #4
Exposición

8 + 4 + 4 + 2

8 + 4 + 2

4 + 4 + 4

4 + 4 + 4



2^o Tema

1 2 3 4